



Awning System

markilux pergola

Exceptional sun and wet weather protection for large areas.



markilux.com

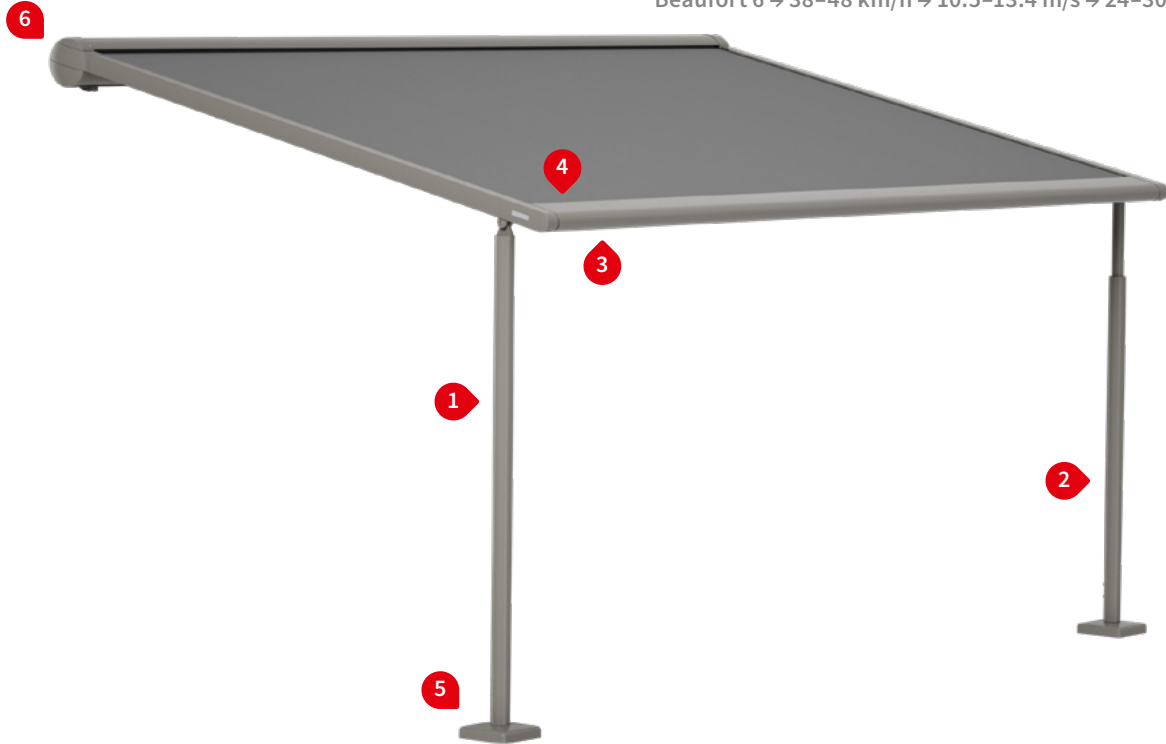
markilux
safe timeless beautiful

01

Product characteristics

Wind resistance class 3

Beaufort 6 → 38–48 km/h → 10.5–13.4 m/s → 24–30 mph



1 version with square or round support posts



2 Adjustable post ¹⁾ manual or motor operation



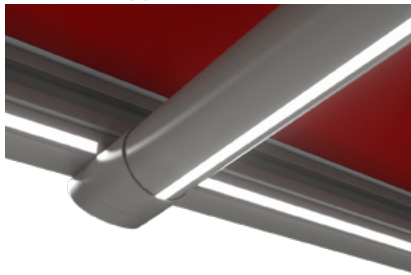
3 drop valance, during extension ¹⁾



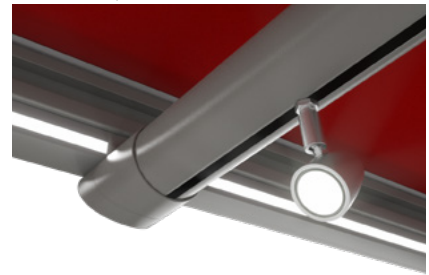
4 solar module sundrive, radio-controlled drop valance operation ¹⁾



LED line in the guide track and cover support tube ¹⁾



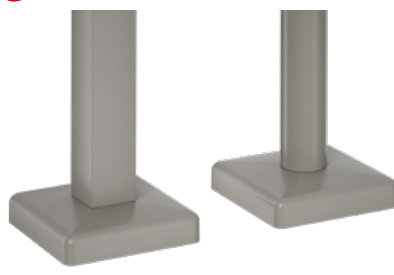
combination of LED-Line and LED-Spots ¹⁾



post with stabilisation box ¹⁾



5 standard footplate covers



6 wall sealing profile ¹⁾



¹⁾ optional configuration

Product characteristics

Description

- The awning system on slender posts and with lateral guide tracks provides generous shade with an extension of up to 6 metres and for areas up to 30 m² with a single unit. Thanks to the tracfix cover guidance system, the sophisticated tensioning technology and its sturdy construction, the system can be used up to Beaufort 6 (wind resistance class 3).

Special features

- fully encompassing cassette that protects the cover perfectly
- the tried and tested tensioning system – with drive belts and integrated gas pistons – delivers optimum cover tension in any phase of extension
- with tracfix system, the continuous lateral cover guidance system that leaves no gap between the cover and guide tracks
- option of shadeplus – vertical protection against low-lying sun, wind and inquisitive glances integrated into the front profile, can be operated manually or solar driven by radio remote control (433 MHz)
- various lighting combinations available: light strip LED-Line in the guide tracks, LED-Line in the cover support tube or LED-Spots fitted to the cover support tube – individually configurable lighting options providing a pleasant atmosphere in the evening
- an optional telescopic post, manual or motor operation, ensures optimised water drainage during rain, even at a low minimum pitch of 7°
- support posts optionally with round or square shaped profiles, incl. screw-on footplates or stabilisation boxes for flexible installation
- can be combined perfectly with the awning systems markilux construct, markilux syncra, vertical blinds markilux 876 tracfix, markilux 776 tracfix, side screen markilux 790

Dimensions

- single unit: 67–600 cm in width, maximum extension 600 cm (depending on the width)
- maximum dimensions width × extension: 500 × 600 cm / 550 × 500 cm / 600 × 450 cm
- coupled units up to 5 fields wide are available
- intermediate sizes are available

Roller tube and lateral bearings

- round roller tube Ø 95 mm with keyway, galvanised steel – excellent stability, ensures near perfect cover performance even at the largest widths
- the roller tube bearing is made of die-cast aluminium

Awning profiles

- extruded aluminium, in façade quality, powder coated
- cassette profile in two pieces, round, Ø 187 mm
- angular guide tracks, width × height 60 mm × 70 mm (coupling guide track 116 × 70 mm)
- front profile rounded at the front, depth × height 150 mm × 70 mm

Side caps

- the cassette end caps with opening for guide tracks are made of die-cast aluminium, powder coated
- the top maintenance cover is made of high-quality plastic, powder coated
- the front profile end caps are made of high-quality plastic, powder coated

Fixture brackets and support posts

- extruded aluminium, powder coated
- cassette brackets: face fixture, top fixture, eaves fixture
- support post round Ø 70 mm or square 70 × 70 mm, standard height 250 cm, heights up to 300 cm are available
- screw-on footplate 200 × 200 mm
- footplate cover 212 × 212 mm in one piece, height 48 mm, is made of die-cast aluminium, rounded corners
- a version of the support posts with optional stabilisation box 600 × 600 mm, height 525 mm, for versatile installation is available

N.B! For additional information and configuration options, please view chapter “General Information” and “markilux Optional Accessories” in the volume “Design blinds for windows | Glass roof awnings”.

01 Frame colours

markilux frame colours without surcharge

traffic white, RAL 9016

metallic aluminium, RAL 9006

grey brown, similar to RAL 8019



off-white textured finish, 5233 ¹⁾

stone grey metallic, 5215 ¹⁾

anthracite metallic, 5204 ¹⁾



Havana brown textured finish, 5229 ¹⁾



Non-standard powder-coated finish

Bespoke frame colours at a surcharge – matt, metallic and pearl finishes as well as other colour ranges (DB, Tiger etc.) on request. All frame colours are available at a surcharge with enhanced corrosion protection.

¹⁾ textured finish

Colours may differ slightly from those depicted in both hue and finish.

Dimensions and configuration options

Single unit

| | | Awning fixture width | | | | | | | | | Minimum fixture width | | |
|----------------------|-------------------|----------------------|-------------------|------|------|------|------|------|------|------|-----------------------|------------------|------------------------|
| | | 150 ¹⁾ | 200 ¹⁾ | 250 | 300 | 350 | 400 | 450 | 500 | 550 | 600 | Hard-wired motor | Radio-controlled motor |
| Order dimensions | | 67 ²⁾ | 151 | 201 | 251 | 301 | 351 | 401 | 451 | 501 | 551 | | |
| | | 150 | 200 | 250 | 300 | 350 | 400 | 450 | 500 | 550 | 600 | | |
| Overall awning width | | + 10 | + 10 | + 10 | + 10 | + 10 | + 10 | + 10 | + 10 | + 10 | + 10 | | |
| H | 150 ¹⁾ | | | | | | | | | | | 73 ²⁾ | 83 ²⁾ |
| | 200 | | | | | | | | | | | | |
| | 250 | | | | | | | | | | | | |
| | 300 | | | | | | | | | | | | |
| | 350 | | | | | | | | | | | | |
| | 400 | | | | | | | | | | | | |
| | 450 | | | | | | | | | | | | |
| | 500 | | | | | | | | | | | | |
| | 550 | | | | | | | | | | | | |
| | 600 | | | | | | | | | | | | |

dimensions in cm

1) = only pergola **with fixed posts**

2) = 94 cm for drop valance with sundrive solar panel

H = *order dimension* = extension

 = optional version: adjustment range of telescopic post 20 cm

 = optional version: adjustment range of telescopic post 30 cm

 = optional version: adjustment range of telescopic post 40 cm

extension

extension

extension

extension

≤ 250 cm

≥ 251 ≤ 350 cm

≥ 351 ≤ 450 cm

≥ 451 cm

The minimum pitch that will ensure water drainage

| | | | | |
|---|-----|-----|-----|-----|
| Unit with fixed posts, without shadeplus | 14° | 14° | 14° | 14° |
| Unit with fixed posts, with shadeplus | 17° | 17° | 17° | 17° |
| Unit with telescopic post, with / without shadeplus | 7° | 8° | 9° | 10° |

Operation

| | standard | optional |
|--|----------|----------|
| manual operation | — | — |
| hard-wired motor | ✓ | — |
| silentec motor (optionally with an external io / RTS receiver) ¹⁾ | — | ✓ |
| radio-controlled motor io, 868 MHz | — | ✓ |
| radio-controlled motor RTS, 433 MHz | — | ✓ |

1) only available for awnings with 1 field and 2 fields, 2 motors

| Awning cover | Fabric pattern no. | Standard | Optional |
|---------------------------------|---|----------|----------|
| sunvas ^{1) 6)} | 301.. / 309..–315.. | ✓ | — |
| perla ^{1) 5)} | 370 .. | — | ✓ |
| sunsilk ^{1) 6)} | 324.. / 325.. / 328.. / 369.. | ✓ | — |
| perla FR ^{1) 5)} | 374.. / 375.. | — | ✓ |
| perfotex ²⁾ | 331.. / 332.. | ✓ | — |
| transolair | 338.. ³⁾ / 339.. ¹⁾ | — | ✓ |
| vuscreen Alu | 317.. | — | — |
| Soltis Perform 92 ⁴⁾ | 92-20.. | — | ✓ |
| Glass fibre screen | 272.. | — | — |

Standard fabric panel widths

1) 60 cm 2) 120 cm 3) 84 cm

4) 88.5 cm 5) Only with tracfix

6) In the case of striped patterns, an even repeat at every second seam in the seam area is not possible.

Coupled Awning

| |
|---|
| 2–5 fields, 1 motor per field |
| alternatively 2 fields, 1 motor / 3 fields, 2 motors / 4 fields, 2 motors |
| maximum field dimensions: see dimension overview for a “single unit” |

General information

Different extensions in coupled awnings are available. In different awning widths, the rolling up characteristics of the covers may also be visually different. This affects neither the functionality of the awning nor the service life of the cover.

Shadeplus ^{1) 2) 3)}

| | Standard | Optional |
|--|----------|----------|
| Height 230 cm (manual operation, winding handle) | | |
| Height 230 cm (motor operation, depending on the fabric series chosen) | | |
| Winding handle | ✓ | — |
| Hard-wired motor | — | — |
| Radio-controlled motor io, 868MHz | — | — |
| Radio-controlled motor, 433 MHz, RTS with sundrive | — | ✓ |
| Cover sunvas / sunsilk / transolair / vuscreen Alu / Soltis Perform 92 | | |

1) Shadeplus cover is narrower than the awning cover

2) Not available in combination with adjustable post with motor drive

3) In the case of coupled awnings, available for all fields only

01 Optional accessories

| | |
|----|--|
| 02 | Adjustable posts, manual or motor-driven |
| 03 | Posts with stabilisation boxes |
| 04 | Shadeplus, radio remote control with solar module sundrive or manual |
| 05 | LED-Line on the guide tracks, on both sides |
| 06 | LED-Line in the cover support tube ¹⁾ |
| 07 | LED-Spots on the cover support tube ¹⁾ |
| | Infrared heater 2500 W |
| | Infrared heater 2500 W with integrated radio-controlled receiver 868 MHz io |
| | Wall sealing profile |
| | Several motors in a coupled awning, can be operated independently |
| | Vertical cassette blind markilux 776 tracfix |
| | Automatic controls (light, wind, rain) |

Important background information can be found in the chapter
“Optional Accessories” in the sales manual “Designer Blinds for
Windows | Glass Roof Awnings”

1) LED-Line and LED-Spots cannot be combined with each other

Shadeplus / drop valance with radio-controlled motor RTS ²⁾ ³⁾

| Shadeplus / drop valance cover | fabric range no. | standard | optional | blind fixture width | height | cover manuf. |
|--------------------------------|---|----------|----------|---------------------|--------|--------------|
| sunvas | 301.. / 309..-315.. | ✓ | — | ≤ 600 | 160 | LN |
| | | | | ≤ 600 | 230 | QN |
| sunsilk | 324.. / 325.. / 328.. / 369.. | ✓ | — | ≤ 600 | 160 | LN |
| | | | | ≤ 600 | 230 | QN |
| sunvas (250 cm) | 31008, -09, -13, -16, -18, -25, 27, -28, -31, -36, -37, -57, -58, 31109, -14, -17 | ✓ | — | ≤ 600 | 230 | N |
| transolair | 338.. / 339.. | — | ✓ | ≤ 600 | 230 | N |
| vuscreen Alu | 317.. | — | ✓ | ≤ 600 | 160 | N |
| Soltis Perform 92 | 92-20.. | — | ✓ | ≤ 490 | 230 | QN |
| glass fibre screen | 272.. | — | — | | | |
| perfortex | 331.. / 332.. | — | — | | | |
| perla | 370.. | — | — | | | |
| perla FR | 374.. / 375.. | — | — | | | |

2) = 433 MHz radio-controlled RTS motor powered by a sundrive solar panel, minimum fixture width 94 cm

3) = only available in plain seamless fabrics (oversized, fabric width > 120 cm) or in plains with a horizontal joint
(fabric width 120 cm)

N = seamless

LN = vertical seam(s), panel width usually 60 cm

QN = horizontal seam(s)

dimensions in cm

Dimensions and configuration options

Coupled unit, 2 fields

| | | Awning fixture width | | | | | | |
|------------------|-----|----------------------|-------------------|------|------|------|------|------|
| | | 600 ¹⁾ | 700 ¹⁾ | 800 | 900 | 1000 | 1100 | 1200 |
| Order dimensions | | 551 | 601 | 701 | 801 | 901 | 1001 | 1101 |
| | | 600 | 700 | 800 | 900 | 1000 | 1100 | 1200 |
| Awning width | | + 10 | + 10 | + 10 | + 10 | + 10 | + 10 | + 10 |
| H | 150 | | | | | | | |
| | 200 | | | | | | | |
| | 250 | | | | | | | |
| | 300 | | | | | | | |
| | 350 | | | | | | | |
| | 400 | | | | | | | |
| | 450 | | | | | | | |
| | 500 | | | | | | | — |
| | 550 | | | | | | — | — |
| | 600 | | | | | | — | — |

Coupled unit, 3 fields

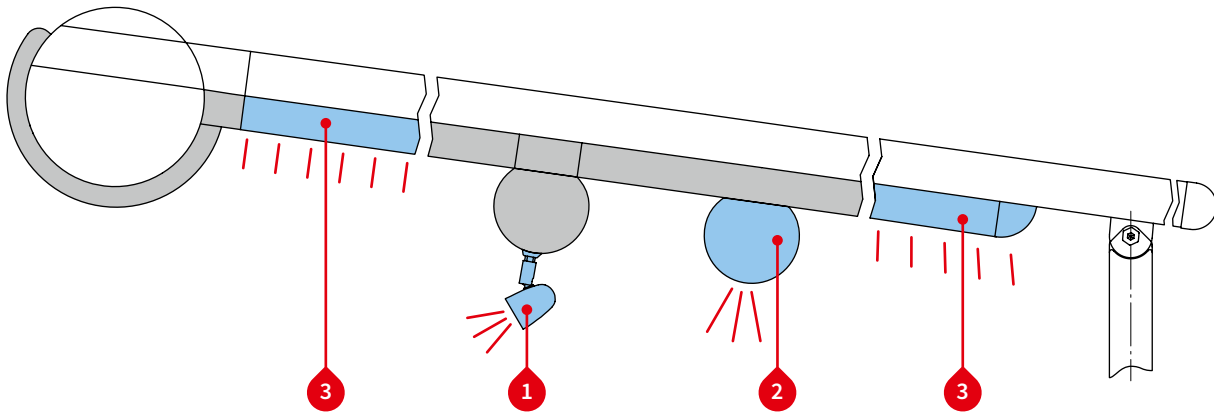
| | | Awning fixture width | | | | | | | | | | | | |
|------------------|-----|----------------------|-------------------|------|------|------|------|------|------|------|------|------|------|------|
| | | 600 ¹⁾ | 700 ¹⁾ | 800 | 900 | 1000 | 1100 | 1200 | 1300 | 1400 | 1500 | 1600 | 1700 | 1800 |
| Order dimensions | | 551 | 601 | 701 | 801 | 901 | 1001 | 1101 | 1201 | 1301 | 1401 | 1501 | 1601 | 1701 |
| | | 600 | 700 | 800 | 900 | 1000 | 1100 | 1200 | 1300 | 1400 | 1500 | 1600 | 1700 | 1800 |
| Awning width | | + 10 | + 10 | + 10 | + 10 | + 10 | + 10 | + 10 | + 10 | + 10 | + 10 | + 10 | + 10 | + 10 |
| H | 150 | | | | | | | | | | | | | |
| | 200 | | | | | | | | | | | | | |
| | 250 | | | | | | | | | | | | | |
| | 300 | | | | | | | | | | | | | |
| | 350 | | | | | | | | | | | | | |
| | 400 | | | | | | | | | | | | | |
| | 450 | | | | | | | | | | | | | |
| | 500 | | | | | | | | | | | | — | — |
| | 550 | | | | | | | | | | | — | — | — |
| | 600 | | | | | | | | | | | — | — | — |

1) = the cassette will be supplied in one piece as standard. If, for transportation or installation reasons, the cassette needs to be split, please note this explicitly when ordering.

H = *order dimension* = extension

dimensions in cm

01 Lighting options



Lighting options

- 1 LED spotlights suspended from the cover support tube ¹⁾
- 2 LED-Line in the cover support tube ¹⁾
- 3 LED-Line in the guide tracks on both sides

For combination possibilities please view section “Dimension overview lighting options”

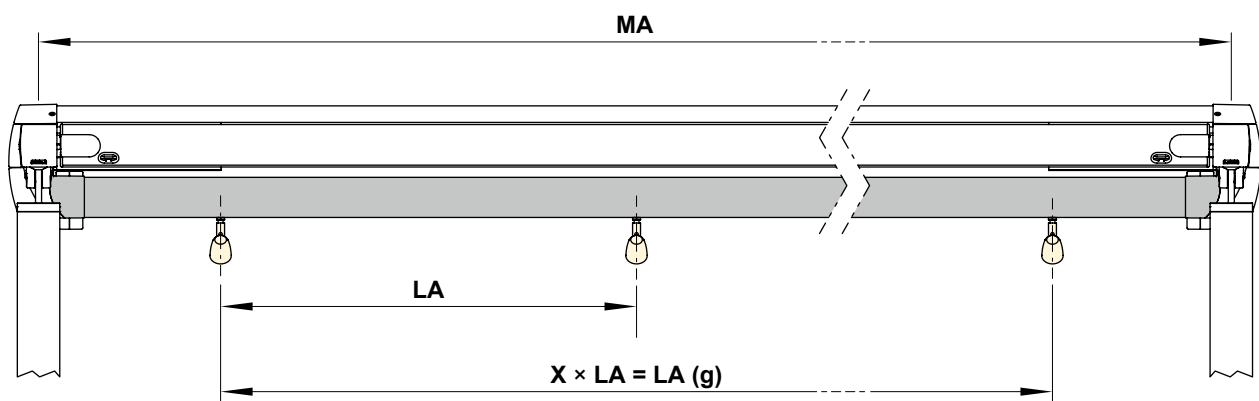
1) The LED-Line and LED spotlights cannot be combined

Controls

| | standard | optional |
|--------------------------------------|----------|----------|
| on / off switch | — | ✓ |
| radio-controlled dimmer io, 868 MHz | ✓ | — |
| radio-controlled dimmer RTS, 433 MHz | — | ✓ |

Distribution of the LED spotlights

- 1 LED spotlights in the cover support tube



| Blind fixture width | No. of spotlights | LA | LA (g) |
|---------------------|-------------------|----|--------|
| 150–250 | 3 | 65 | 130 |
| 251–300 | 3 | 98 | 196 |
| 301–350 | 3 | 98 | 196 |
| 351–400 | 4 | 98 | 294 |
| 401–450 | 4 | 98 | 294 |
| 451–500 | 5 | 98 | 392 |
| 501–550 | 5 | 98 | 392 |
| 551–600 | 6 | 98 | 490 |

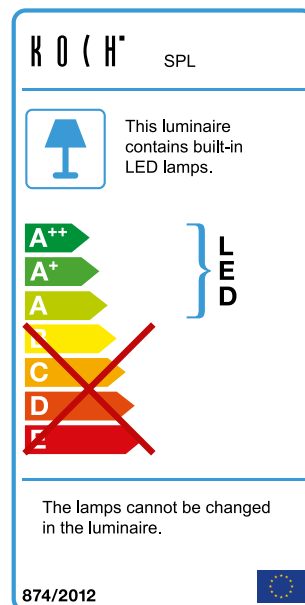
dimensions in cm

LA (g) = distance between the spotlights (total)

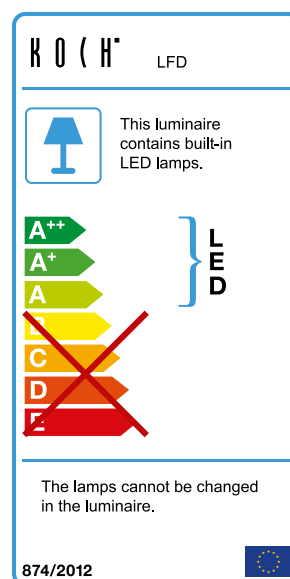
MA = order dimension = awning fixture width

1 LED spotlights in the cover support tube**Technical specification**

| | |
|-----------------------------------|------------------|
| Operating voltage | 230 V, 50 Hz |
| Power output of one LED spotlight | 5 W |
| Light source | LED (12 V) |
| Number of transformers | 1 unit |
| Light temperature | warm white |
| IP protection class | IP 44 |
| Service life | approx. 20.000 h |

**2 and 3 LED-Line in the guide tracks and / or in the cover support tube****Technical specification**

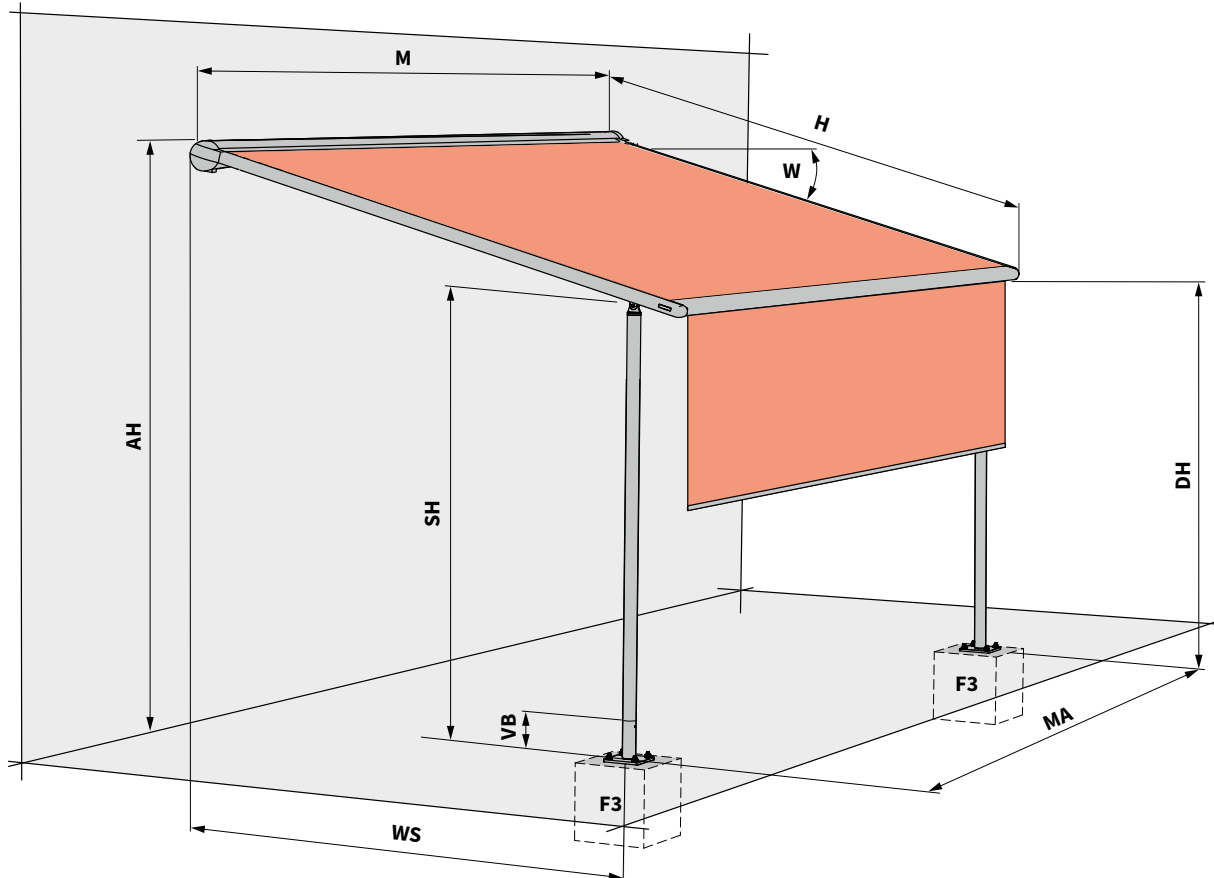
| | |
|-----------------------------------|------------------|
| Operating voltage | 230 V, 50 Hz |
| Power output of one LED spotlight | 10 W |
| Light source | LED (12 V) |
| Number of transformers | 120 units / m |
| Light temperature | warm white |
| IP protection class | IP 44 |
| Service life | approx. 15.000 h |



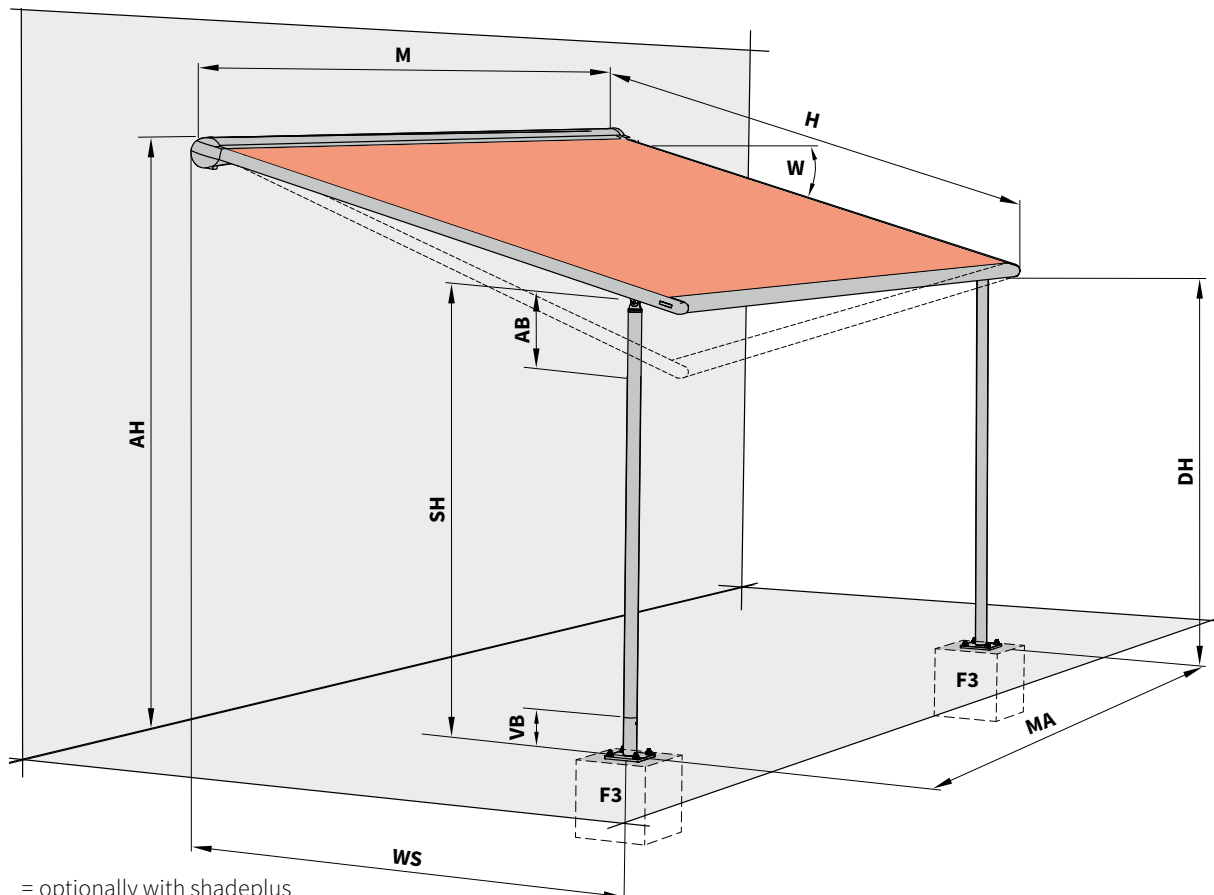
01

Dimension overview

pergola with fixed posts ¹⁾ – support post fixture to a concrete footing



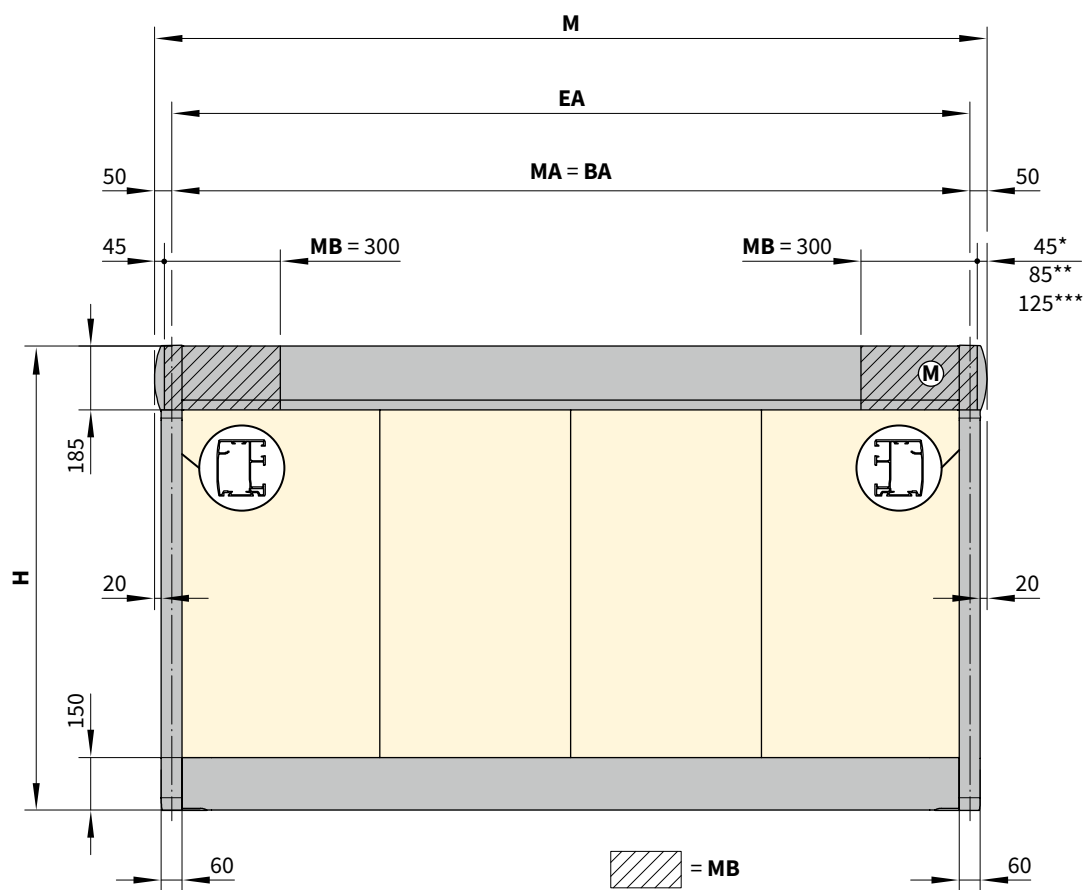
pergola with telescopic post ¹⁾ – support post fixture to a concrete footing



1) = optionally with shadeplus

Overview of fixture dimensions

Single unit



* = dimensions for rear cable exit on motor side (standard)

** = dimensions for bottom cable exit on motor side (optional)

*** = dimensions for cable duct in case of lighting

[...] = the cover gap dimension in standard units;
there is no cover gap in units with the tracfix system

AH = fixture height

BA = fixture width = awning fixture width = order width

DH = headroom

EA = single unit

F3 = concrete foundation.

Please view section "Concrete foundations"

H = **order dimension** = extension

M = overall awning width = MA + 10 cm

(M) = operation side, motor drive

MA = **order dimension** = awning fixture width

MB = bracket fixture range

SH = **order dimension** = post height, standard
height 2500 mm (bespoke heights on request)

VB = height adjustment at the base of both the front
support posts during installation approximately 100 mm

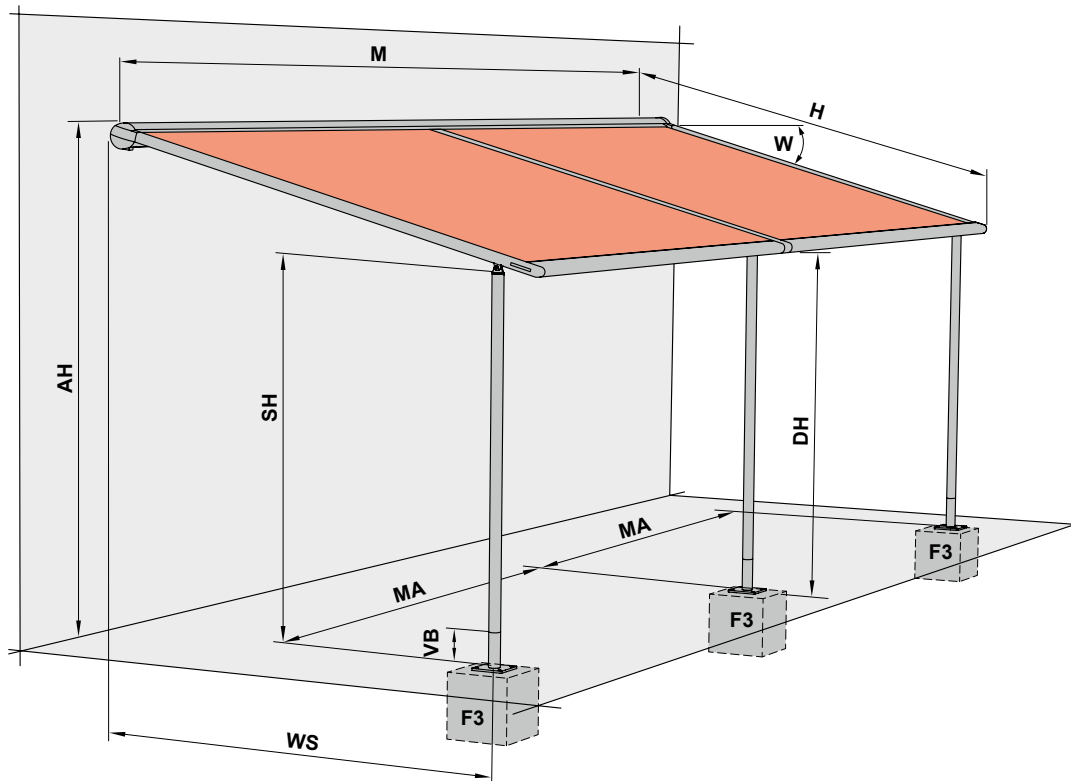
W = pitch setting = 5°–45°

WS = distance from wall ↔ support post centre

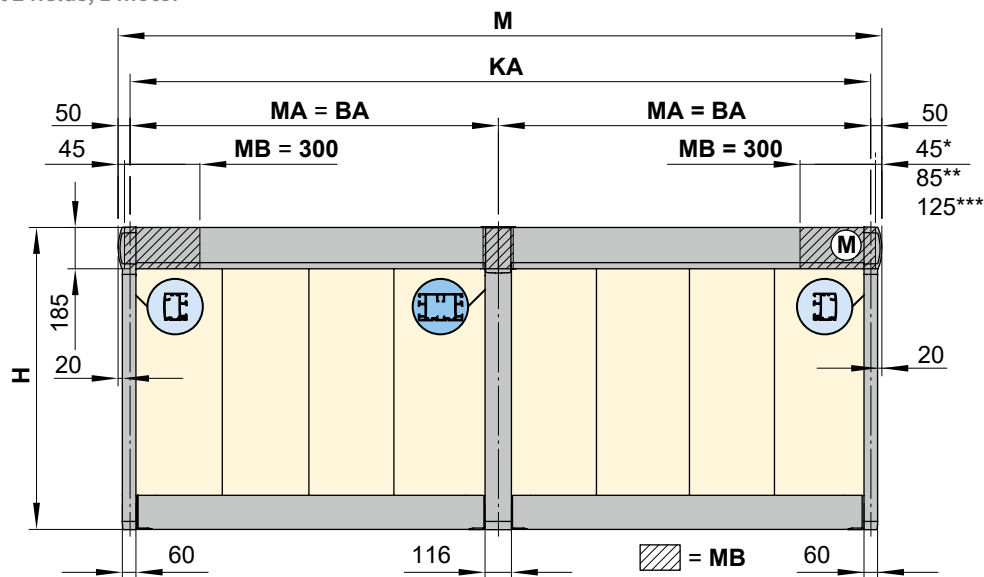
dimensions in mm

01 Overview of fixture dimensions

Coupled Awning



Coupled unit 2 fields, 1 motor



* = dimensions for rear cable exit on motor side (standard)

** = dimensions for bottom cable exit on motor side (optional)

*** = dimensions for cable duct in case of lighting

AH = fixture height

BA = fixture width = awning fixture width = order width

DH = headroom

EA = single unit

F3 = concrete foundation.

Please view section "Concrete foundations"

H = order dimension = extension

KA = coupled awning

M = overall awning width = MA + 10 cm

(M) = operation side, motor drive

MA = order dimension = awning fixture width

MB = bracket fixture range

SH = order dimension = post height, standard
height 2500 mm (bespoke heights on request)

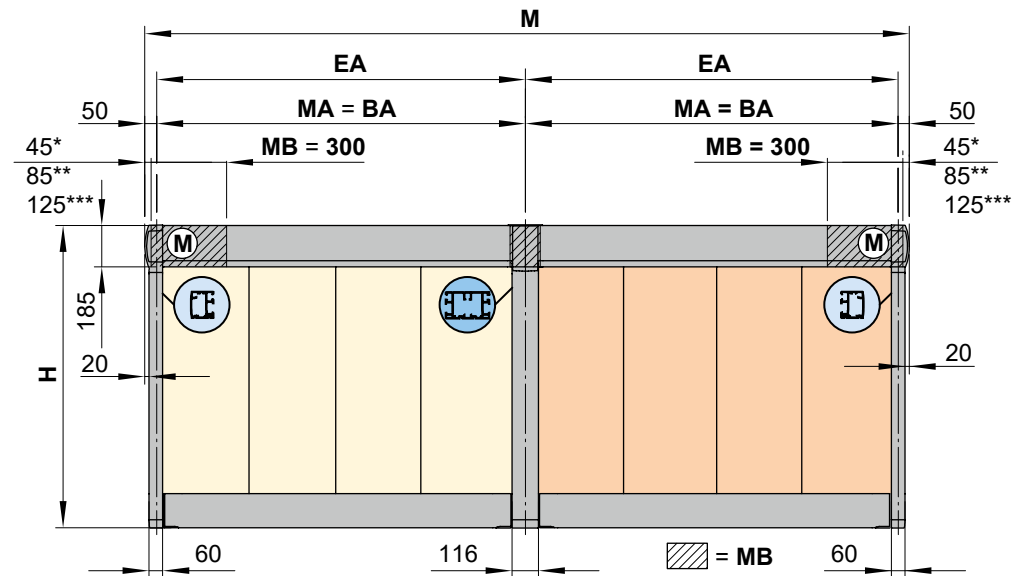
VB = height adjustment 10 cm

W = pitch setting = 5°–45°

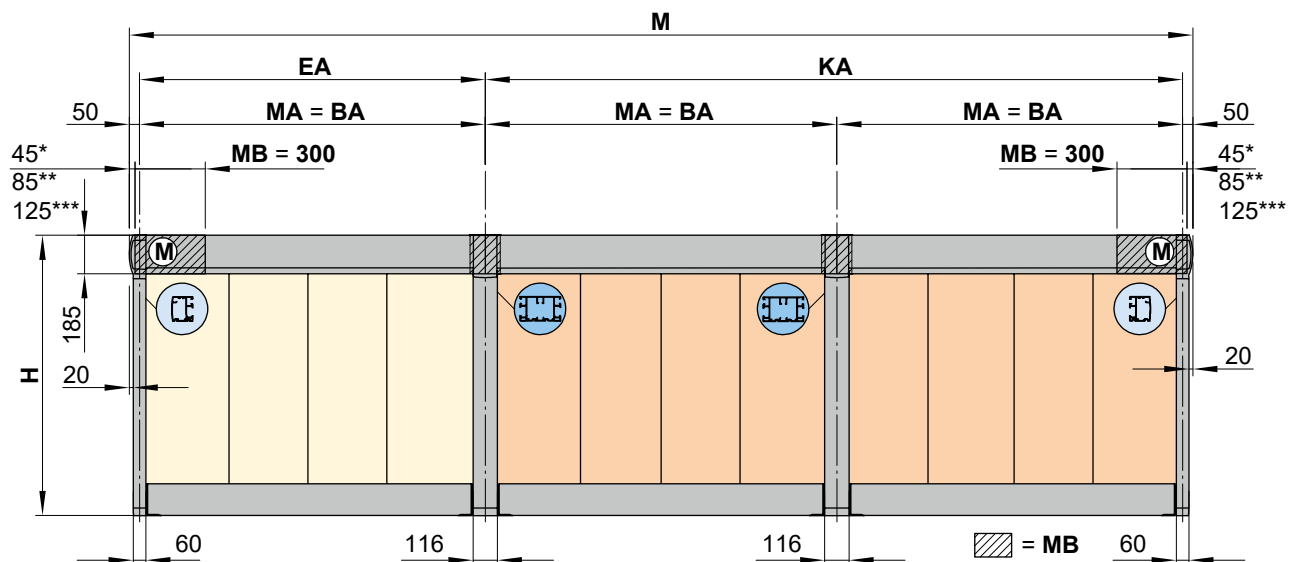
WS = distance from wall ↔ support post dimensions in mm

Dimension overview

Coupled unit 2 fields, 2 motors



Coupled unit 3 fields, 2 motors

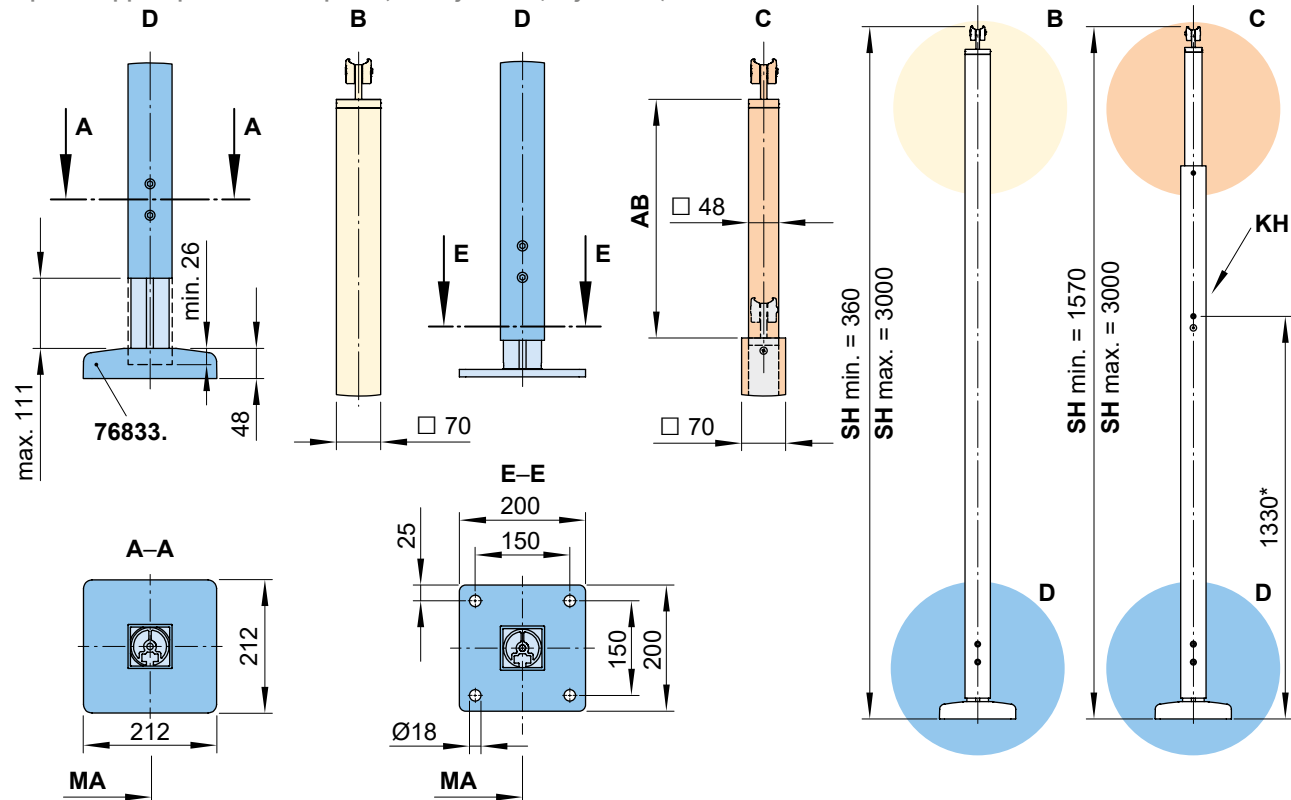


- | | |
|------------|---|
| * | = dimensions for rear cable exit on motor side (standard) |
| ** | = dimensions for bottom cable exit on motor side (optional) |
| *** | = dimensions for cable duct in case of lighting |
| BA | = fixture width = awning fixture width = order width |
| EA | = single unit |
| H | = <i>order dimension</i> = extension |
| KA | = coupled awning |
| M | = overall awning width = MA + 10 cm |
| Ⓜ | = operation side, motor drive |
| MA | = <i>order dimension</i> = awning fixture width |
| MB | = bracket fixture range |

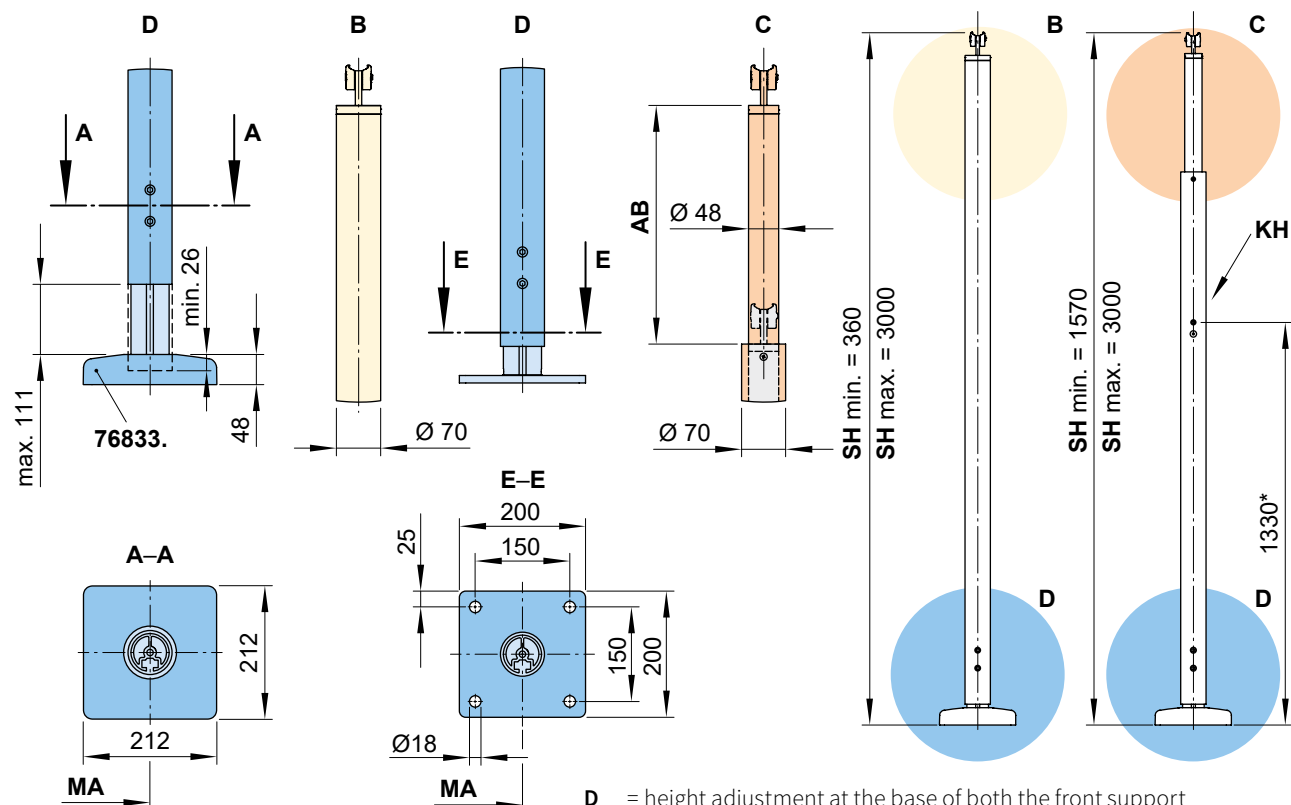
dimensions in mm

Post dimensions

Square support post with footplate (not adjustable/adjustable)



Round support post with footplate (not adjustable/adjustable)



* = dimensions at the standard height

AB = adjustment range of a post 200, 300 or 400 mm.
For more detailed information please refer to
"Dimensions and configuration options"

B = support post without manual adjustment option

C = support post with manual adjustment option

D = height adjustment at the base of both the front support posts during installation approximately 100 mm

KH = winch handle socket

MA = *order dimension* = awning fixture width = fixture width

SH = *order dimension* = post height post height, standard height
2500 mm (bespoke heights on request) dimensions

dimensions in mm

Footplate cover

01

02

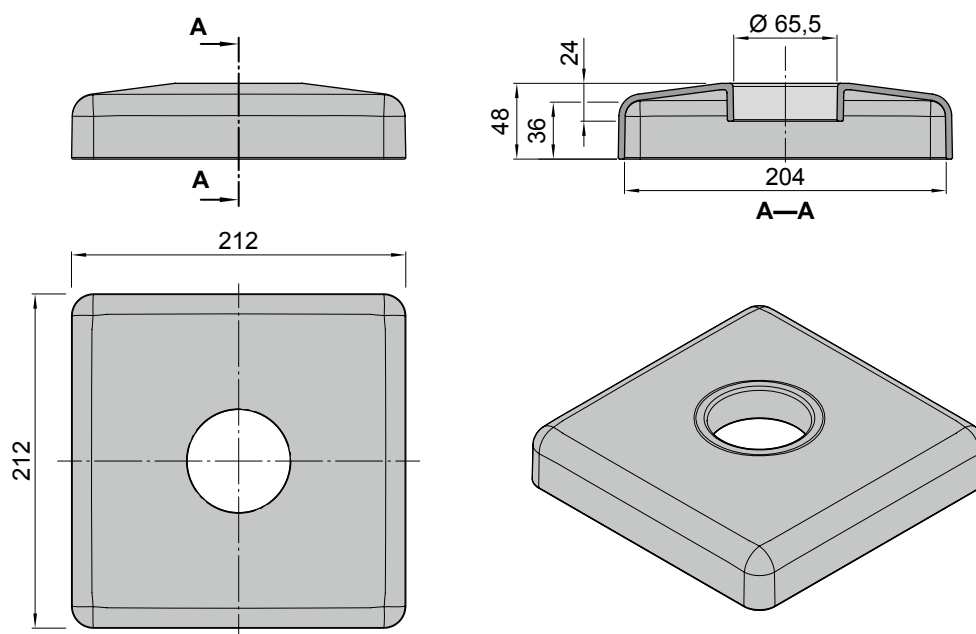
03

04

05

06

07

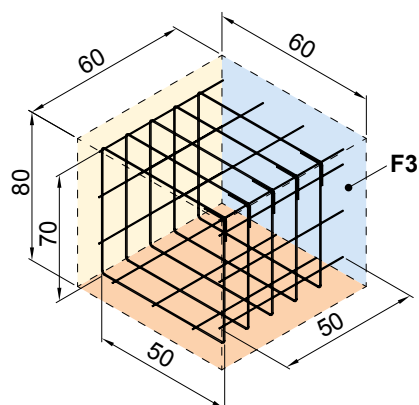


Concrete foundations

To be supplied on site:

Concrete foundations with a compressive strength complying with C25/30 (previously B25) with a reinforcement cage made of rebar matting Q188.

F3



The footplates (F3) are to be fitted to the concrete footings

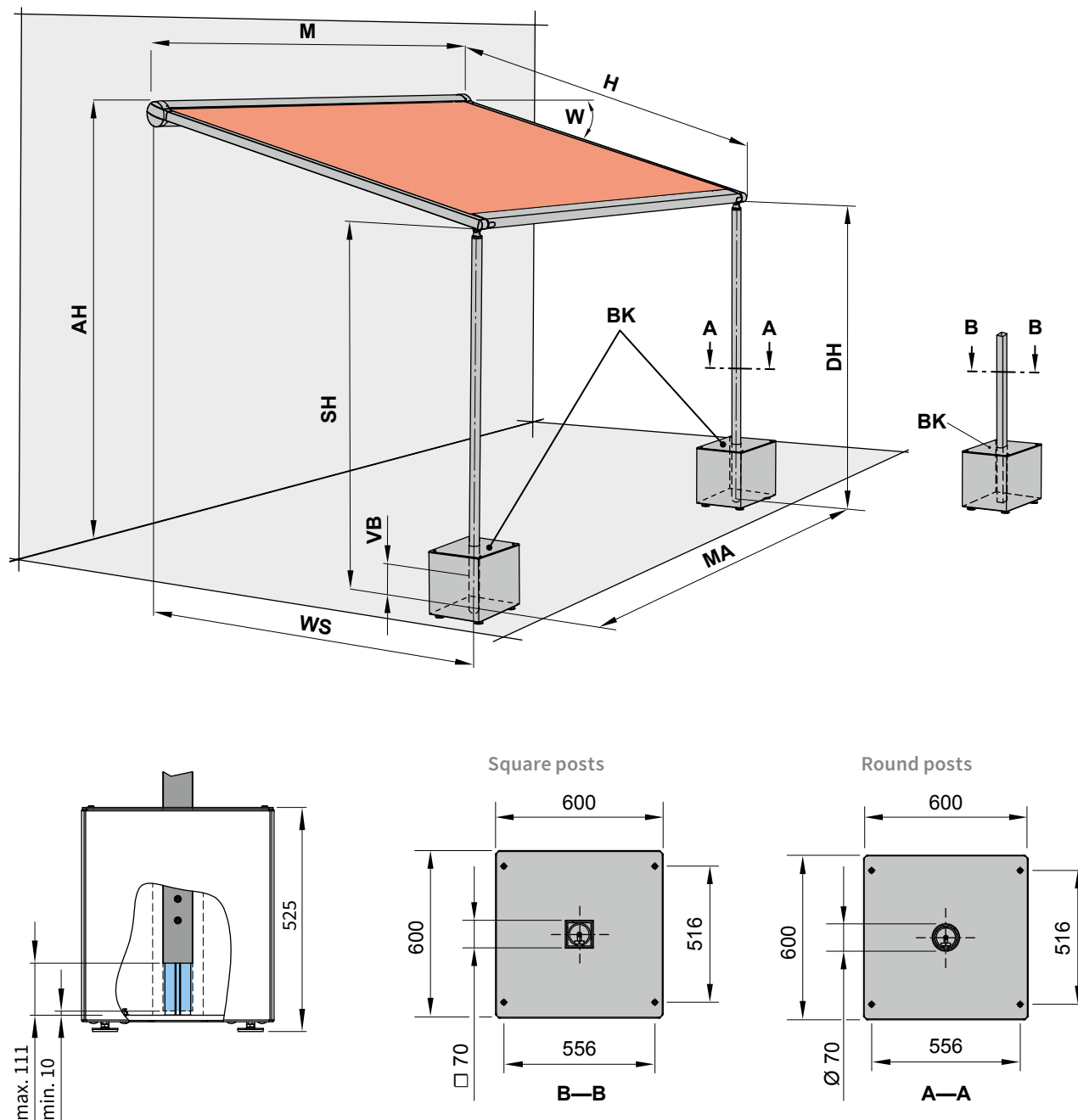
using Fischer marine-grade stainless steel anchor bolts (FAZ 10/30 and washers certified to DIN 9021 (or equivalent)

dimensions in cm

01

Dimension overview

pergola – support posts with stabilisation boxes



Fill each of the stabilisation boxes on site with at least 150 kg of sand, gravel or pebbles.

AH = fixture height

BK = stabilisation box

DH = headroom

H = *order dimension* = extension

M = overall awning width = $MA + 10 \text{ cm}$
MA = *order dimension* = awning fixture width = fixture width

SH = *order dimension* = support post height

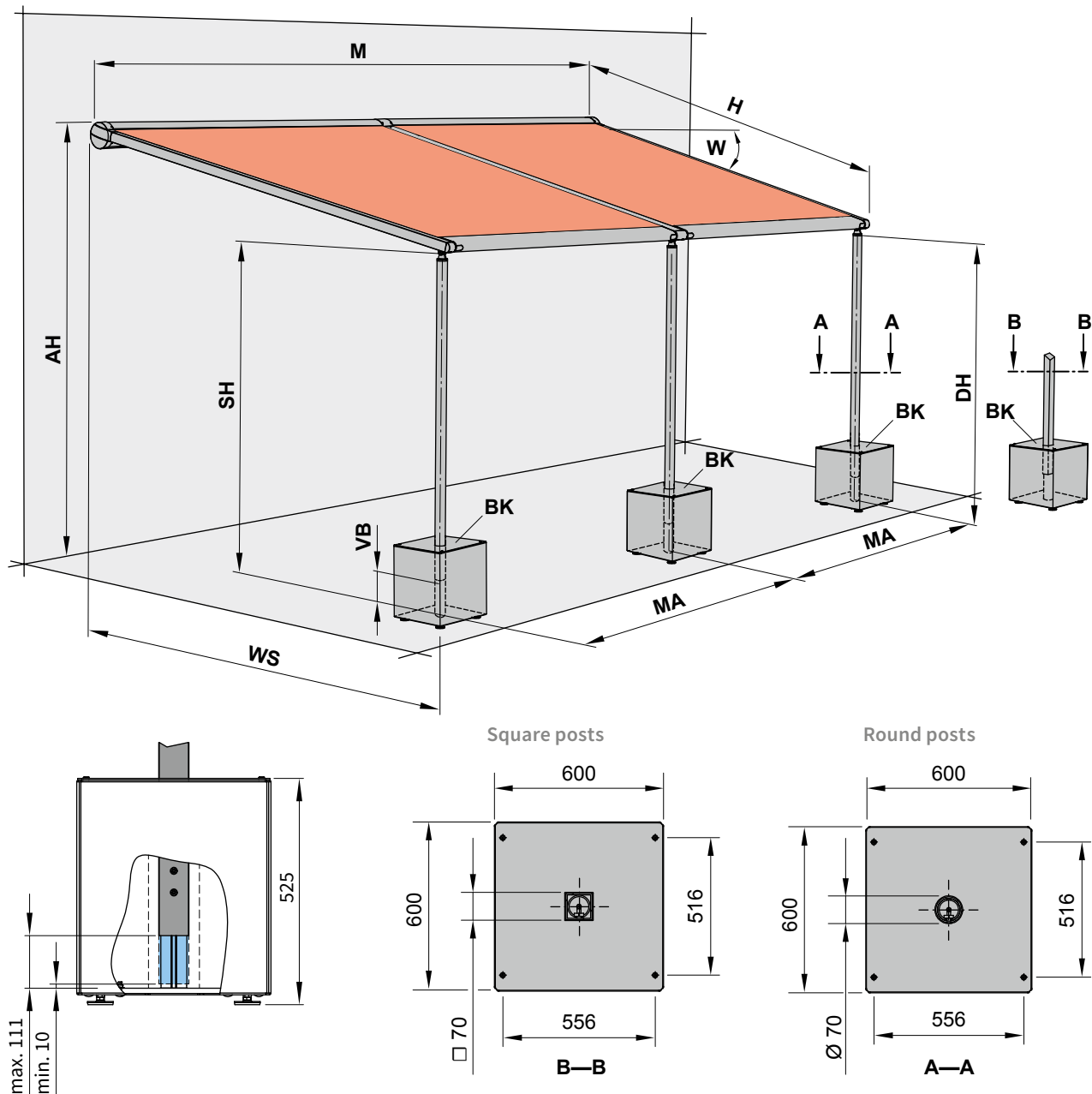
VB = height adjustment at the base of both the front support posts during installation approximately 100 mm

W = pitch setting = $5^\circ - 45^\circ$
WS = distance from wall \leftrightarrow support post centre

dimensions in mm

Dimension overview

pergola – support posts with stabilisation boxes, coupled unit



Fill each of the stabilisation boxes on site with at least 150 kg of sand, gravel or pebbles.

AH = fixture height

BK = stabilisation box

DH = headroom

H = *order dimension* = extension

M = overall awning width = MA + 10 cm

MA = *order dimension* = awning fixture width = fixture width

SH = *order dimension* = support post height

VB = height adjustment at the base of both the front support posts during installation approximately 100 mm

W = pitch setting = 5°–45°

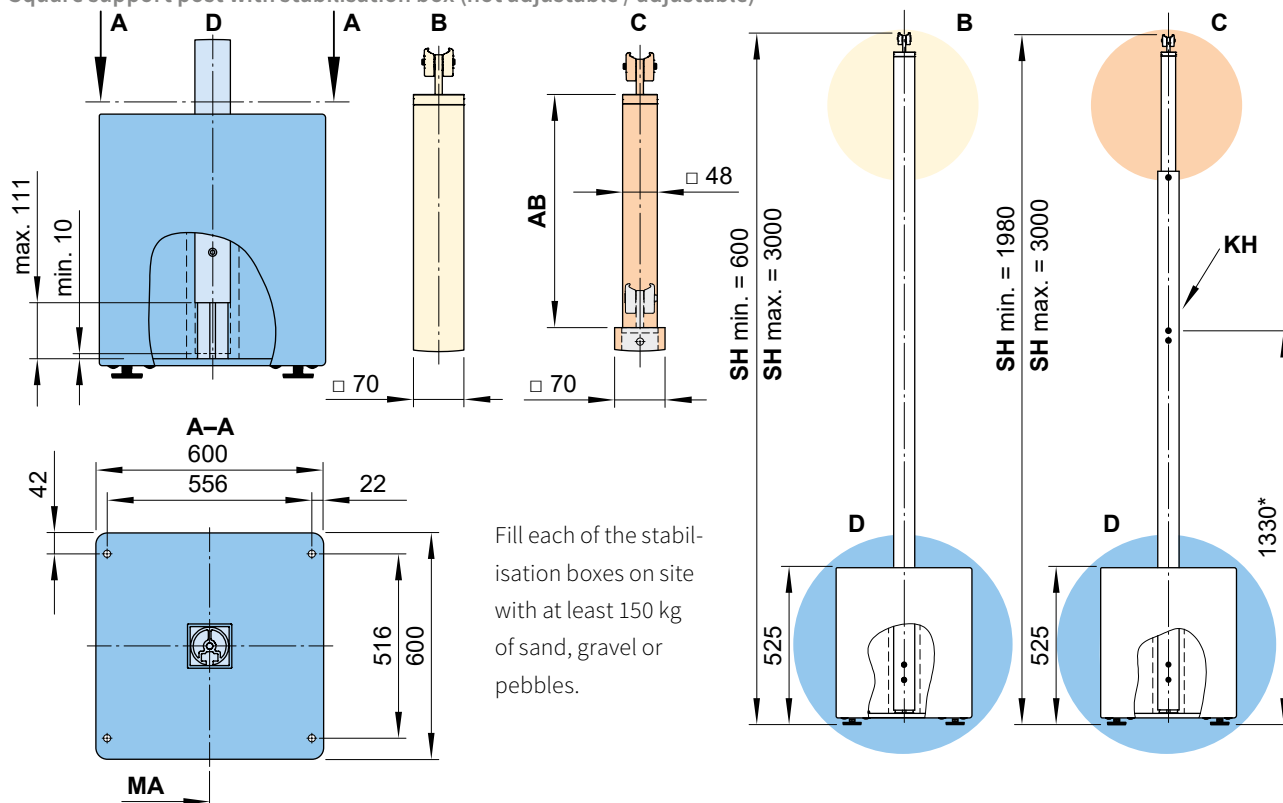
WS = distance from wall ↔ support post centre

dimensions in mm

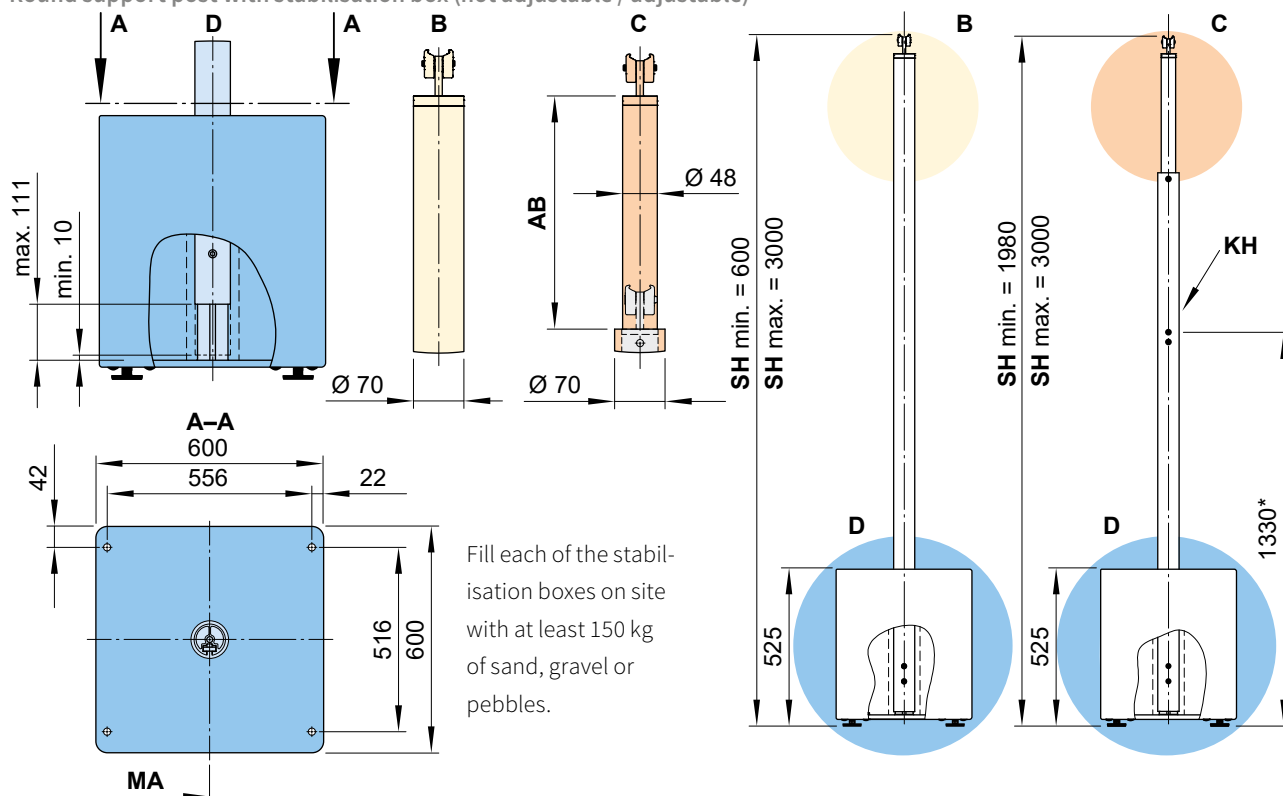
01

Post dimensions

Square support post with stabilisation box (not adjustable / adjustable)



Round support post with stabilisation box (not adjustable / adjustable)



* = dimensions at the standard height

AB = adjustment range of a post 200, 300 or 400 mm.
For more detailed information please refer to "Dimensions and configuration options"

B = support post without manual adjustment option

C = support post with manual adjustment option

D = height adjustment at the base of both the front support posts during installation approximately 100 mm

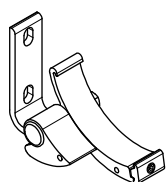
KH = winch handle socket

MA = order dimension = awning fixture width = fixture width

SH = order dimension = post height post height, standard height
2500 mm (bespoke heights on request)

dimensions in mm

Fixtures, fittings and accessories

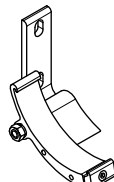


face fixture cassette
bracket

left

pitch adjustment range
5°–45°

76063.

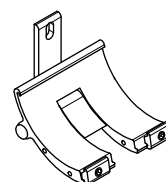


face fixture cassette
bracket

right

pitch adjustment range
5°–45°

76064.

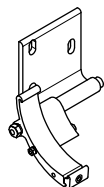


coupling cassette
bracket

central

pitch adjustment range
5°–45°

76181.

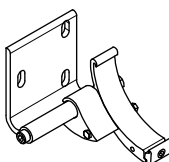


face fixture cassette
bracket, wide

left

pitch adjustment range
5°–45°

76231.

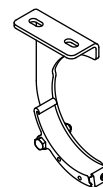


face fixture cassette
bracket, wide

right

pitch adjustment range
5°–45°

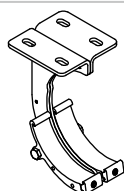
76232.



top fixture cassette
bracket

pitch adjustment range
5°–20°

77058.

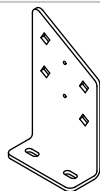


coupling cassette
bracket

top fixture

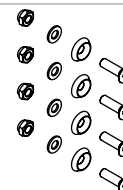
pitch adjustment range
5°–20°

73803.



eaves fixture bracket

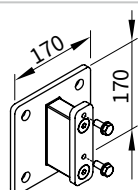
77010.



accessories

for two eaves fixture
brackets 77010.

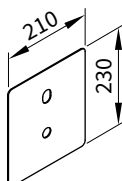
767281



stand-off brackets
for face fixture brackets
76063., 76064. and 76181.

length min 80 mm up to
max. 300 mm

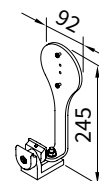
77956.



cover plate for
installation with
stand-off bracket 77956.
in the case of external
insulation

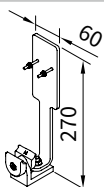
210 × 230 mm

71844.



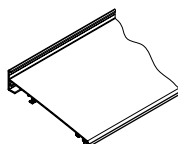
bracket sun and/or wind
sensor io

76723.



bracket sun-/ wind or
rain sensor

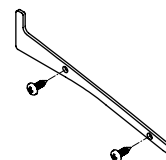
76050.



Wall sealing profile
incl. brush seal
when installing with a
coverboard

available by the metre

76385. and 704241

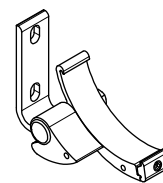
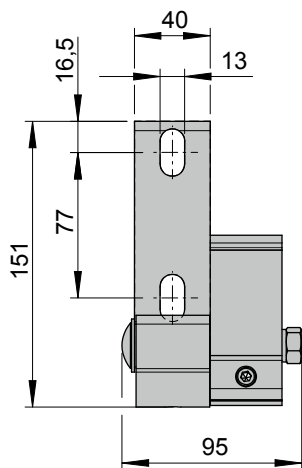


1 side plate including
2 pan-head self-tapping
screws for wall sealing
profile

76386. and 2 × 735611

01 Face fixture

Face fixture cassette bracket, left



face fixture cassette bracket

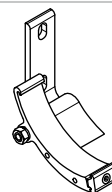
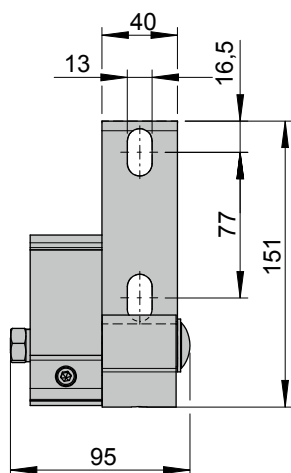
left

pitch adjustment range
5°–45°

76063.

dimensions in mm

face fixture cassette bracket, right



face fixture cassette bracket

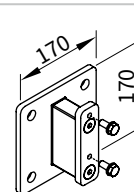
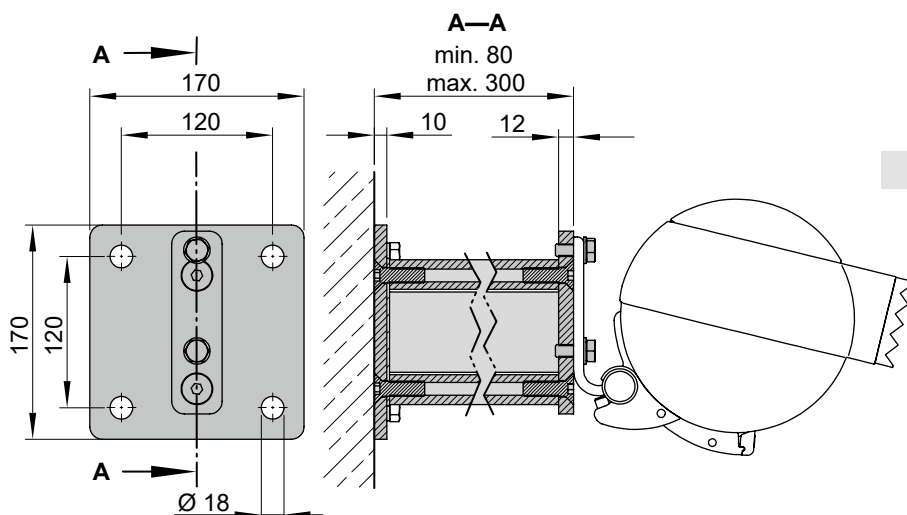
right

pitch adjustment range
5°–45°

76064.

dimensions in mm

Face fixture using stand-off brackets



stand-off brackets for
face fixture brackets
76063., 76064. and 76181.

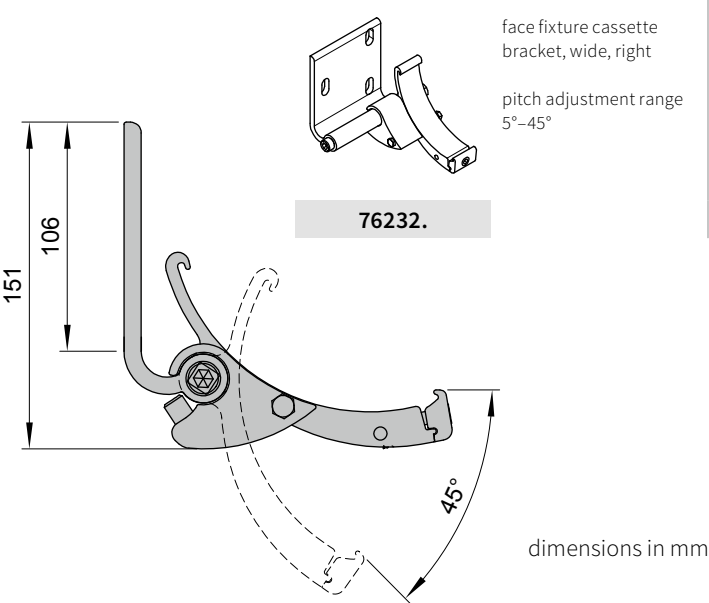
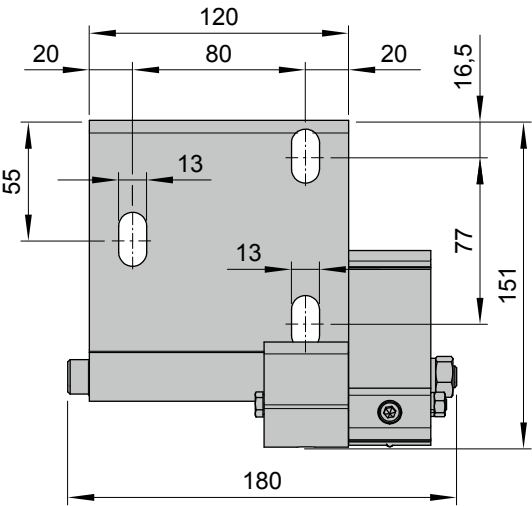
length min. 80 mm up to
max. 300 mm

77956.

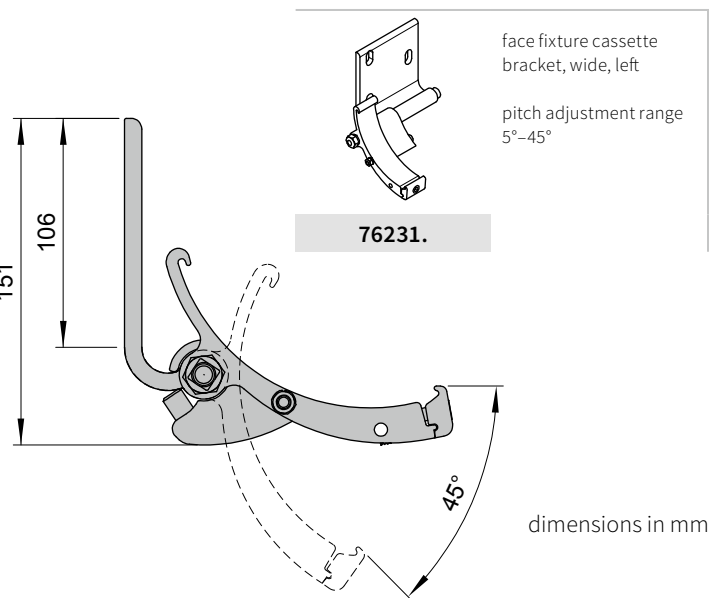
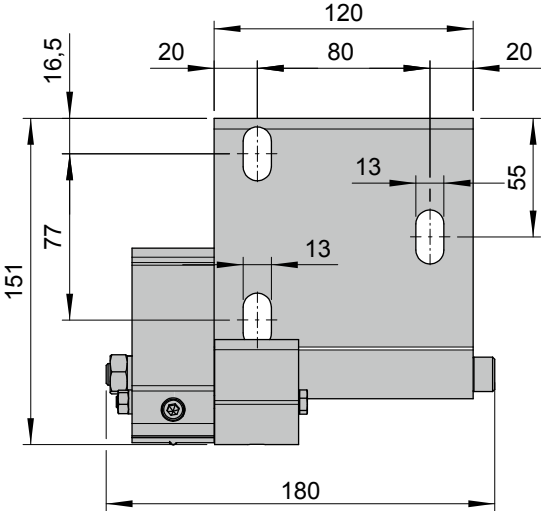
dimensions in mm

Face fixture

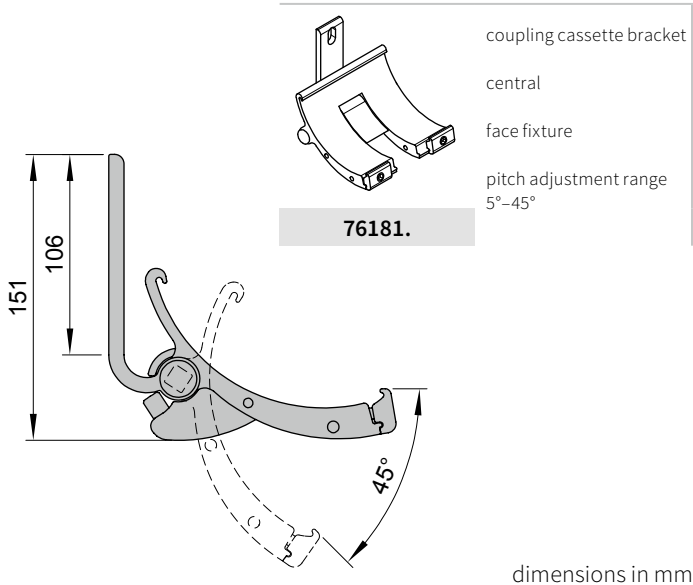
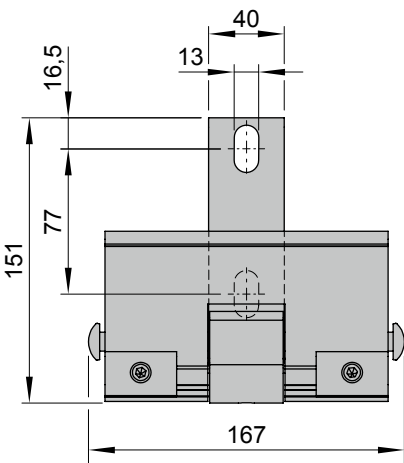
Face fixture cassette bracket, wide, right



Face fixture cassette bracket, wide, left

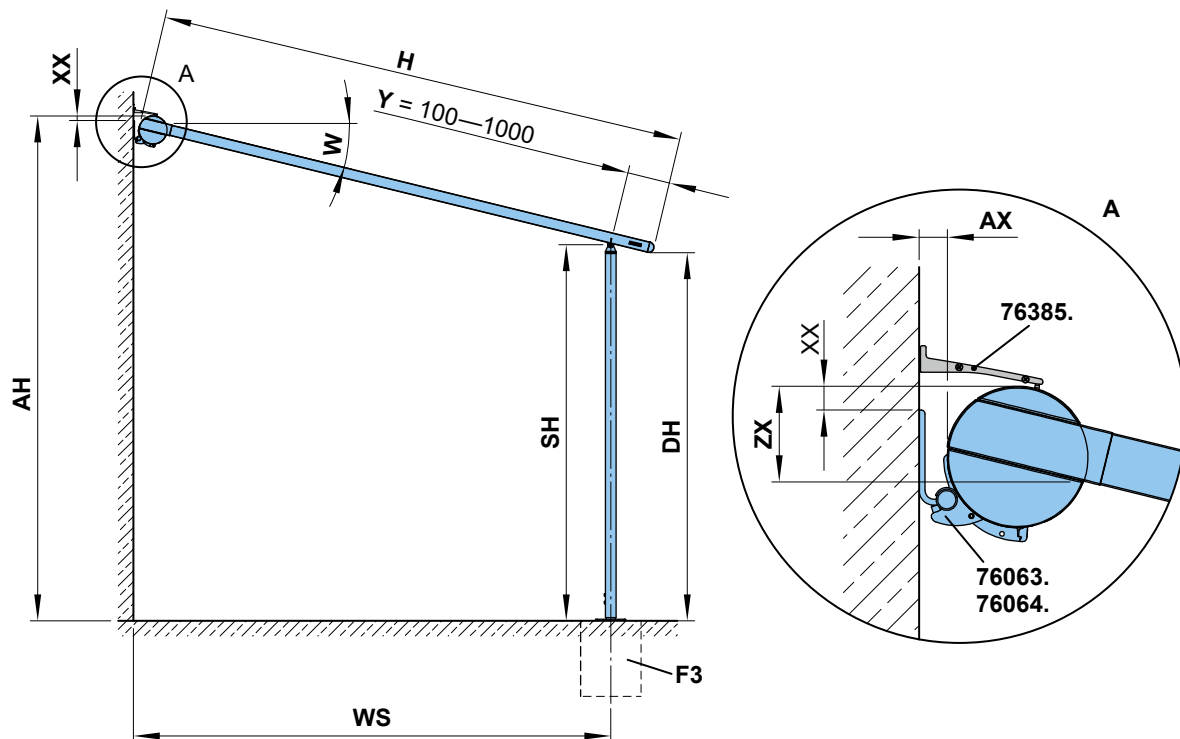


Coupling cassette bracket (central in coupled units)



01 Face fixture

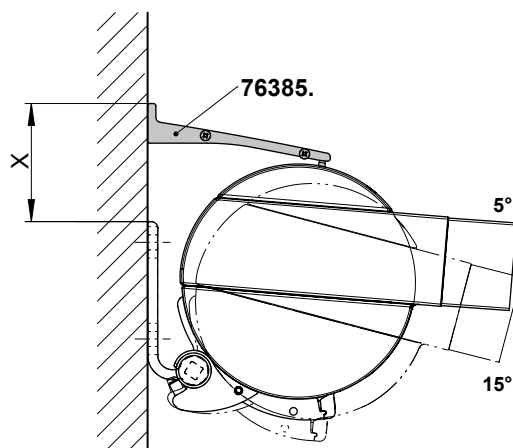
Dimension overview support post with footplate



| W | AX | XX | ZX |
|-----|----|-----|-----|
| 5° | 26 | 46 | 112 |
| 10° | 32 | 38 | 120 |
| 15° | 38 | 30 | 128 |
| 20° | 44 | 22 | 135 |
| 25° | 49 | 13 | 142 |
| 30° | 54 | 4 | 149 |
| 35° | 58 | -5 | 156 |
| 40° | 62 | -15 | 161 |
| 45° | 65 | -24 | 167 |

dimensions in mm

Face fixture with wall sealing profile



| W | x |
|-----|----|
| 5° | 95 |
| 10° | 89 |
| 15° | 81 |

76385. = wall sealing profile (standard width = awning fixture width (**MA**) + 58 mm)

AH = fixture height = $SH + ZX + \sin W \times (H - Y)$

AX = distance from wall ↔ cassette

DH = headroom = $SH - \sin W \times Y$

F3 = concrete foundation. Please view section "Concrete foundations"

H = *order dimension* = extension

SH = *order dimension* = $AH - ZX - \sin W \times (H - Y)$

W = pitch (measured from the horizontal)

WS = distance from wall ↔ support post centre = $\cos W \times (H - Y) + AX$

Y = the support post can be moved back by min. 100 mm and max. 1000 mm

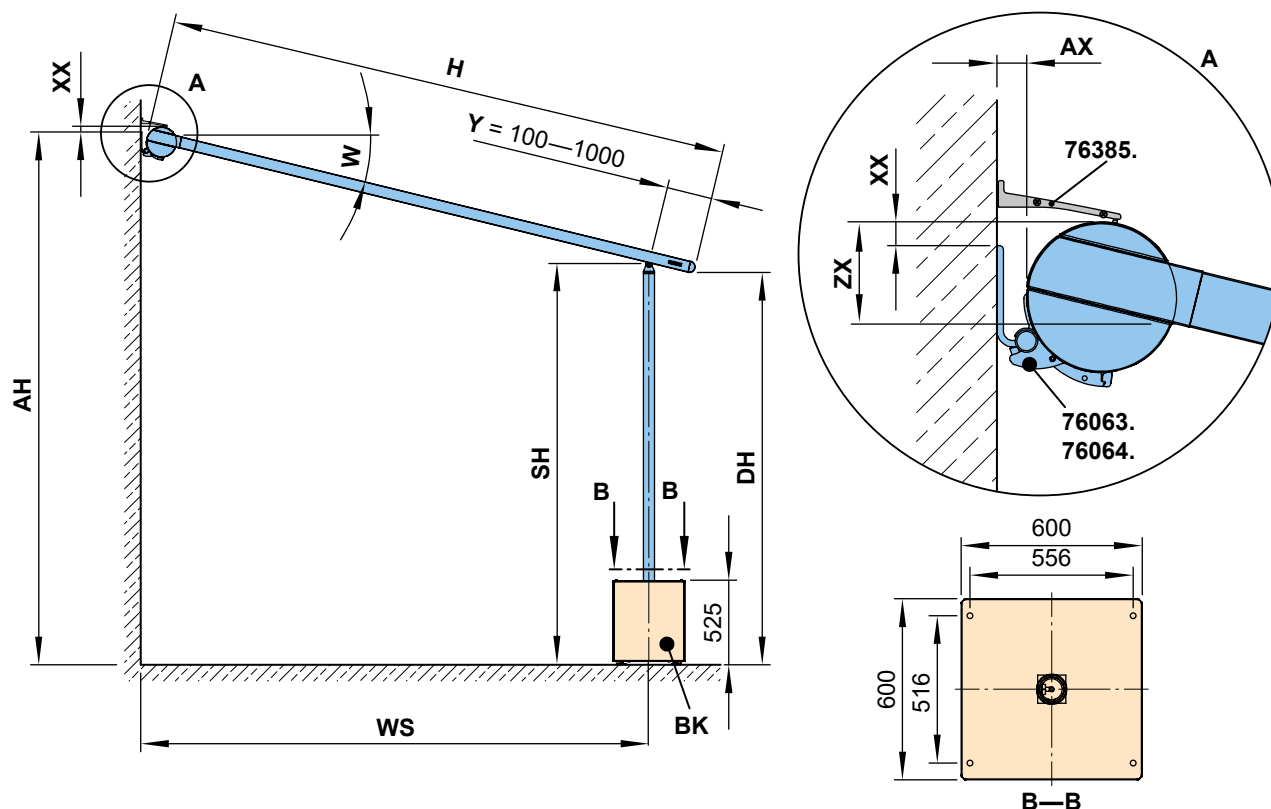
XX = distance from the top edge of the fixture bracket to the top edge of the cassette (see table)

ZX = distance upper edge cassette – bottom edge of guide track

dimensions in mm

Face fixture

Dimension overview support post with stabilisation box



| W | AX | XX | ZX |
|-----|----|-----|-----|
| 5° | 26 | 46 | 112 |
| 10° | 32 | 38 | 120 |
| 15° | 38 | 30 | 128 |
| 20° | 44 | 22 | 135 |
| 25° | 49 | 13 | 142 |
| 30° | 54 | 4 | 149 |
| 35° | 58 | -5 | 156 |
| 40° | 62 | -15 | 161 |
| 45° | 65 | -24 | 167 |

dimensions in mm

Fill each of the stabilisation boxes on site with at least 150 kg of sand, gravel or pebbles.

76385. = wall sealing profile (standard width = awning fixture width (**MA**) + 58 mm)

AH = fixture height = $SH + ZX + \sin W \times (H - Y)$

AX = distance from wall ↔ cassette

BK = stabilisation box

DH = headroom = $SH - \sin W \times Y$

H = *order dimension* = extension

SH = *order dimension* = $AH - ZX - \sin W \times (H - Y)$

W = pitch

WS = distance from wall ↔ support post centre = $\cos W \times (H - Y) + AX$

Y = the support post can be moved back by min. 100 mm and max. 1000 mm

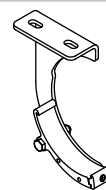
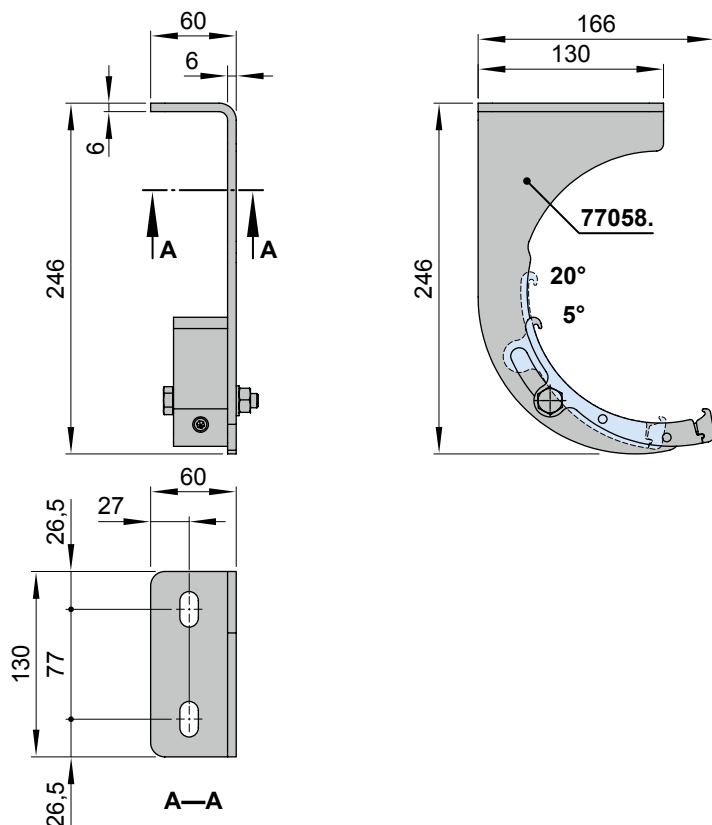
XX = distance from the top edge of the fixture bracket to the top edge of the cassette (see table)

ZX = distance upper edge cassette – bottom edge of guide track

dimensions in mm

01 Top fixture

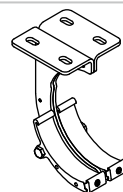
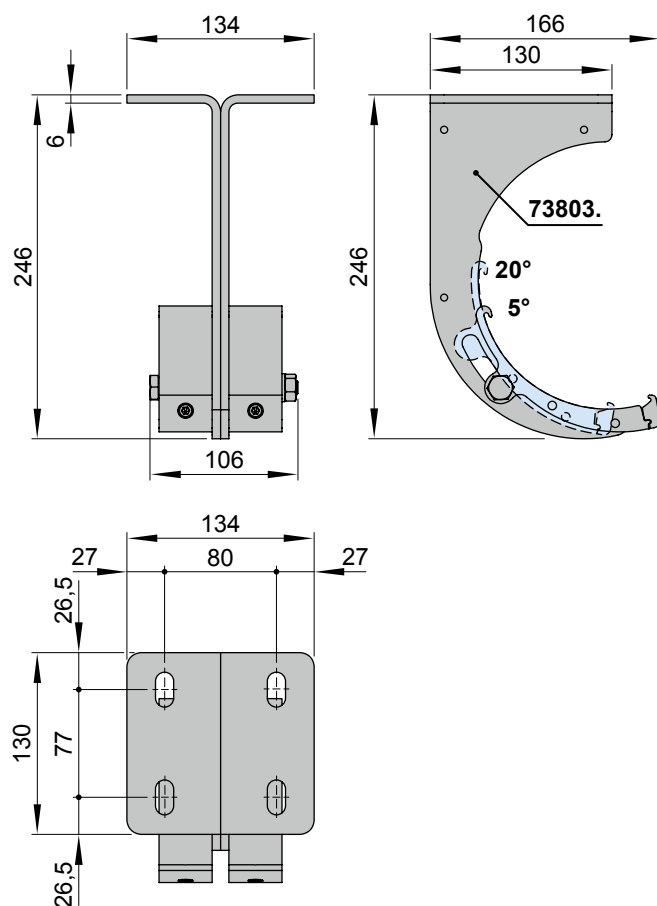
Top fixture cassette bracket, right and left



top fixture cassette
bracket
right / left
pitch adjustment range
5°-20°

77058.

Top fixture coupling cassette bracket (central in coupled units)



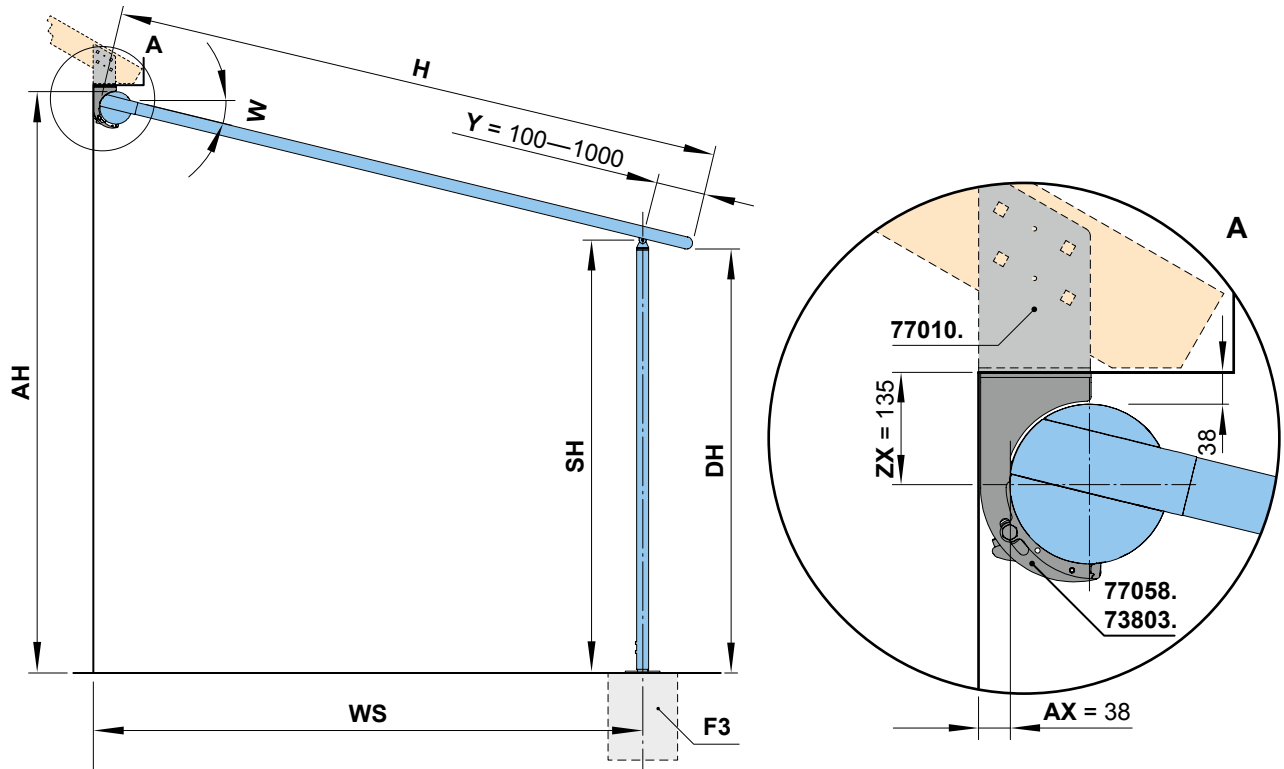
coupling cassette bracket
central
top fixture
pitch adjustment range
5°-20°

73803.

dimensions in mm

Top and eaves fixture

Dimension overview support post with footplate



73803. = coupling cassette bracket

77010. = eaves fixture bracket

77058. = top fixture cassette bracket right / left, pitch adjustment range 5°–20°

AH = fixture height = $SH + ZX + \sin W \times (H - Y)$

AX = distance from wall ↔ cassette

DH = headroom = $SH - \sin W \times Y$

F3 = concrete foundation. Please view section "Concrete foundations"

H = *order dimension* = extension

SH = support post height, standard height 2500 mm (special heights on request) = $AH - ZX - \sin W \times (H - Y)$

W = pitch

WS = distance from wall ↔ support post centre = $\cos W \times (H - Y) + AX$

Y = the support post can be moved back by min. 100 mm and max. 1000 mm

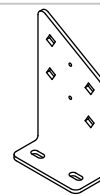
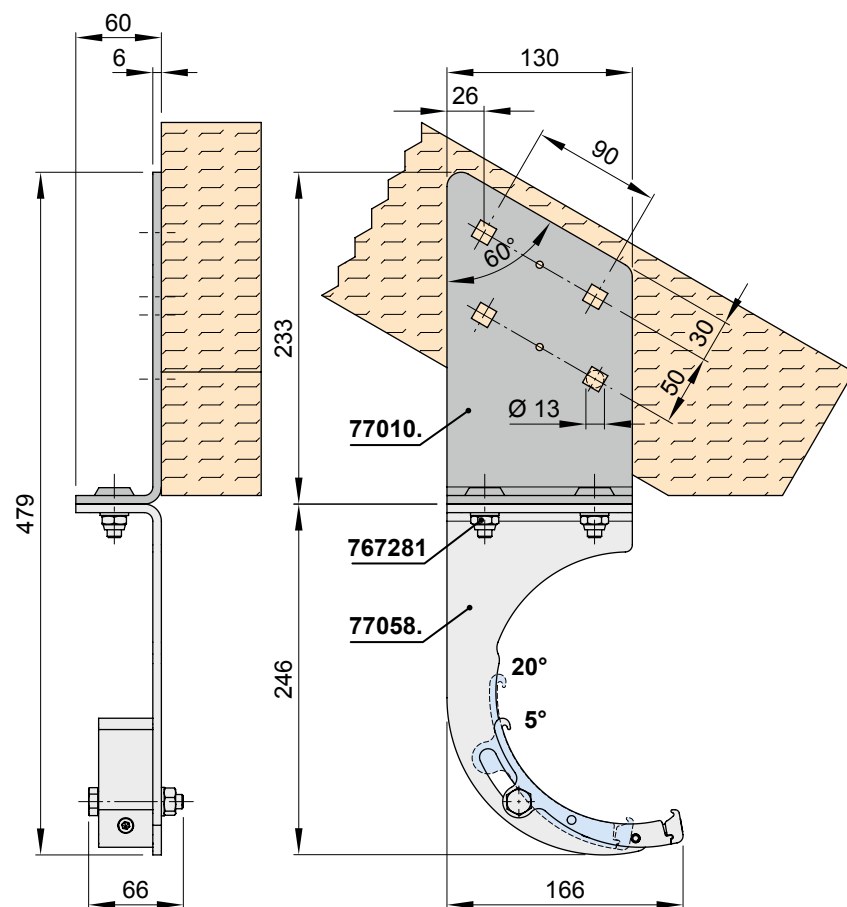
ZX = calculation value for fixture height AH (135 mm)

dimensions in mm

01

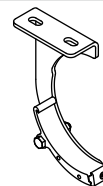
Eaves fixture

Eaves fixture bracket



eaves fixture bracket

77010.

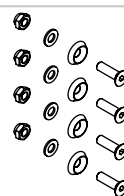


top fixture cassette bracket

right / left

pitch adjustment range
5°–20°

77058.



accessories

for two eaves fixture
brackets 77010.

767281

Adjustable post, motor-driven

- Post height, minimum: 1970 mm
- Motor cable, black
- The LED-Line guide tracks are always installed on all guide tracks of the markilux pergola for a harmonious look
- Cannot be combined with shadeplus

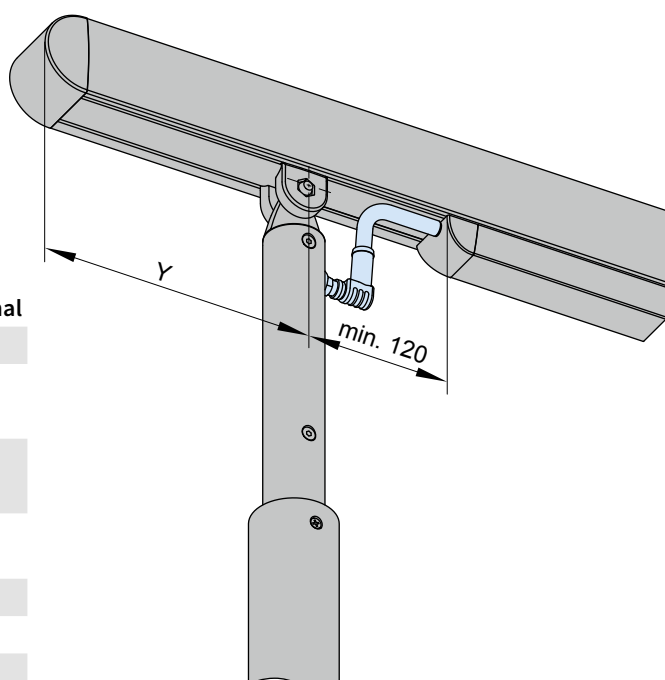
Automatic controls

Standard Optional

| | | |
|---|---|---|
| Hard-wired motor | ✓ | — |
| Radio receiver Somfy Slim Plug io (8271254) | — | ✓ |
| Radio receiver Universal Slim Receiver RTS Plug (8272148) | — | ✓ |

Technical details Hard-wired motor

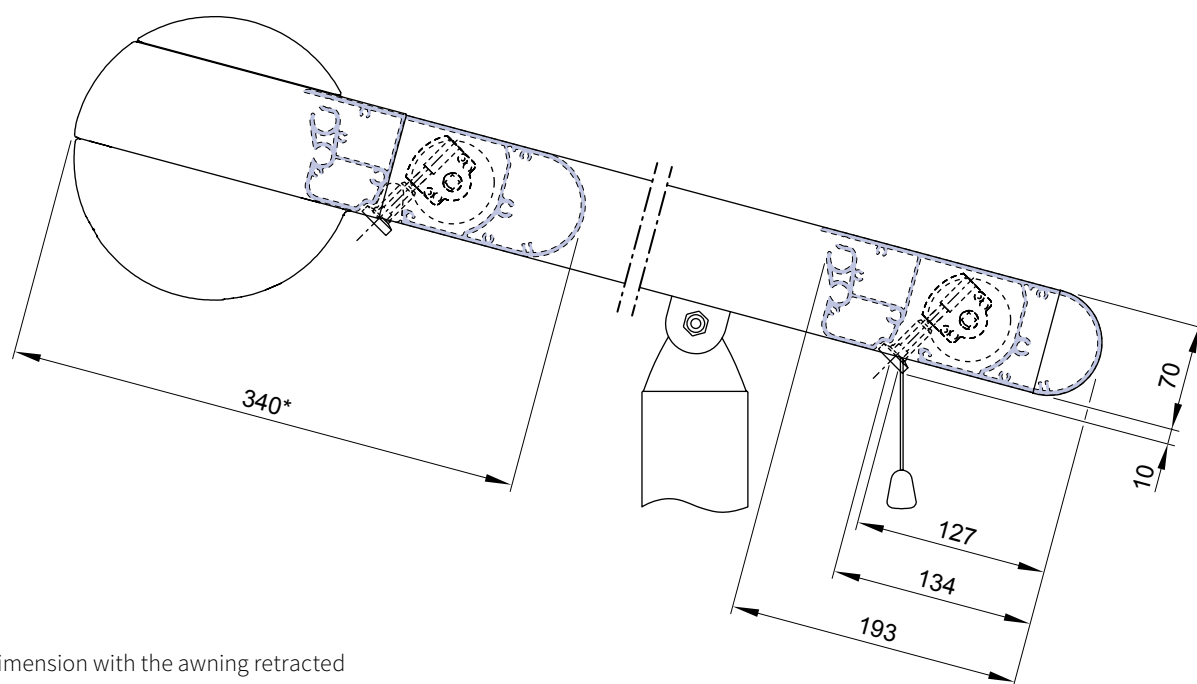
| | |
|------------------|----------|
| Power supply | 230 V DC |
| Power output | 110 W |
| Protection class | IP 44 |



Y = distance from post centre to leading edge of front profile. Dimensions: min. = 100 mm, max. = 1000 mm dimensions in mm

Overview of fixture dimensions, shadeplus

Magnetic gearbox operation



* = dimension with the awning retracted

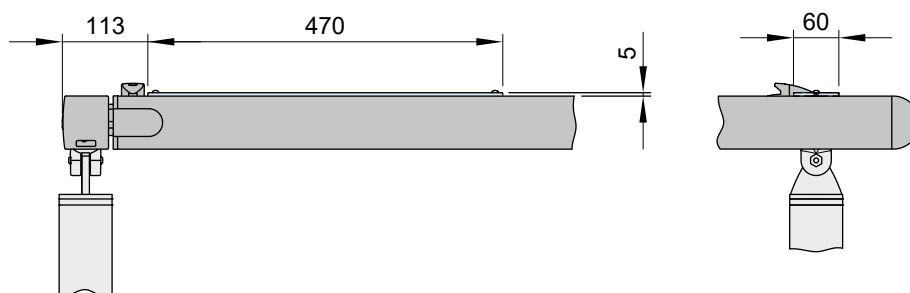
markilux foldable crank handle



with magnetic gearbox attachment for manual operation of the drop valance
lengths: standard 120 cm, optional 160 cm, from 160 cm up to max. 280 cm on request
(order no. 74271.)

sundrive

Solar module for radio-controlled drop valance operation

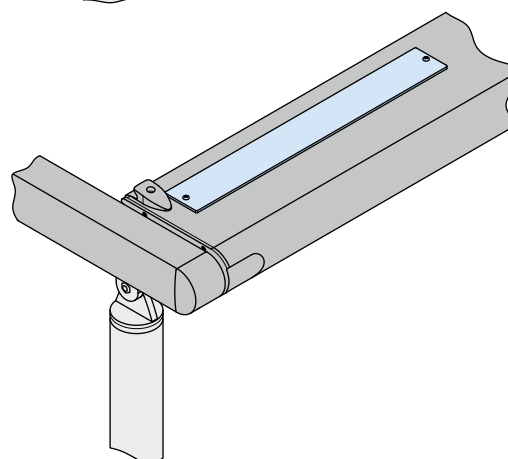


Technical data solar module

| | |
|---------------------------|--------------|
| voltage | max. 21 V DC |
| current | max. 196 mA |
| output | 3.2 W |
| ingress protection rating | IP 44 |
| battery capacity | 2200 mAh |

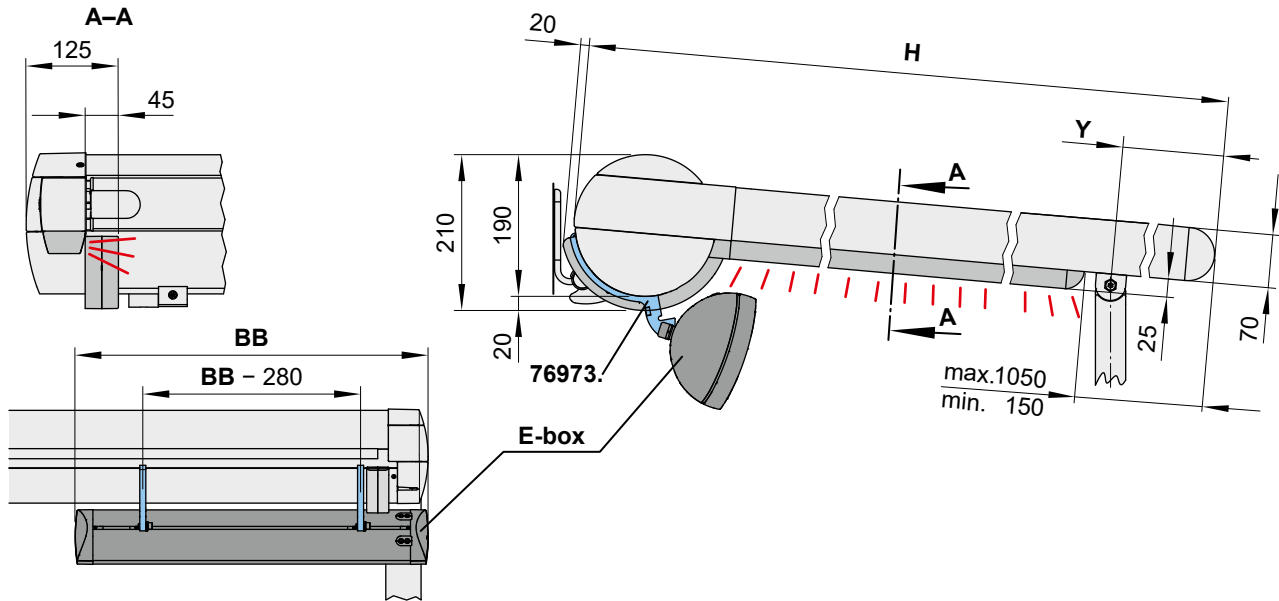
Technical data radio-controlled motor 433 MHz

| | |
|---------------------------|---------|
| power supply | 12 V DC |
| output | 26 W |
| ingress protection rating | IP 44 |



dimensions in mm

Option 1: LED-Line in the guide tracks, electronic components in an E box



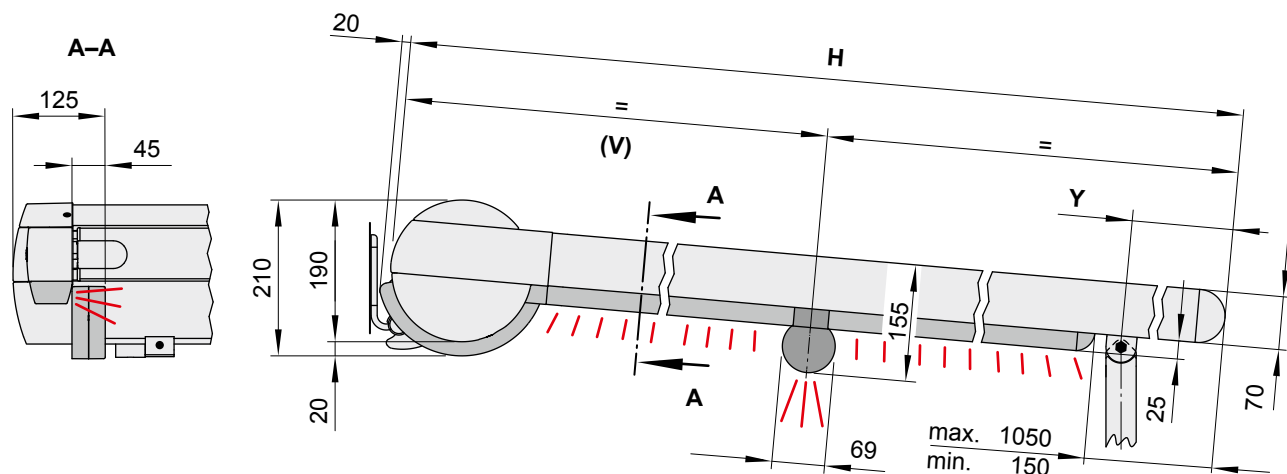
H = *order dimension* = extension

E-box = Please refer to “E-box for the electronics”

Y = distance from post centre to leading edge of front profile. Dimensions: min. = 100 mm, max. = 1000 mm

Option 2: LED-Line in the cover support tube, electronic components in the cover support tube

Option 3: LED-Line in the cover support tube and in the guide tracks, electronic components in the cover support tube



H = *order dimension* = extension

V = distance from the rear of the cassette to the centre of the cover support tube. Standard: centred ($V = H \div 2$).

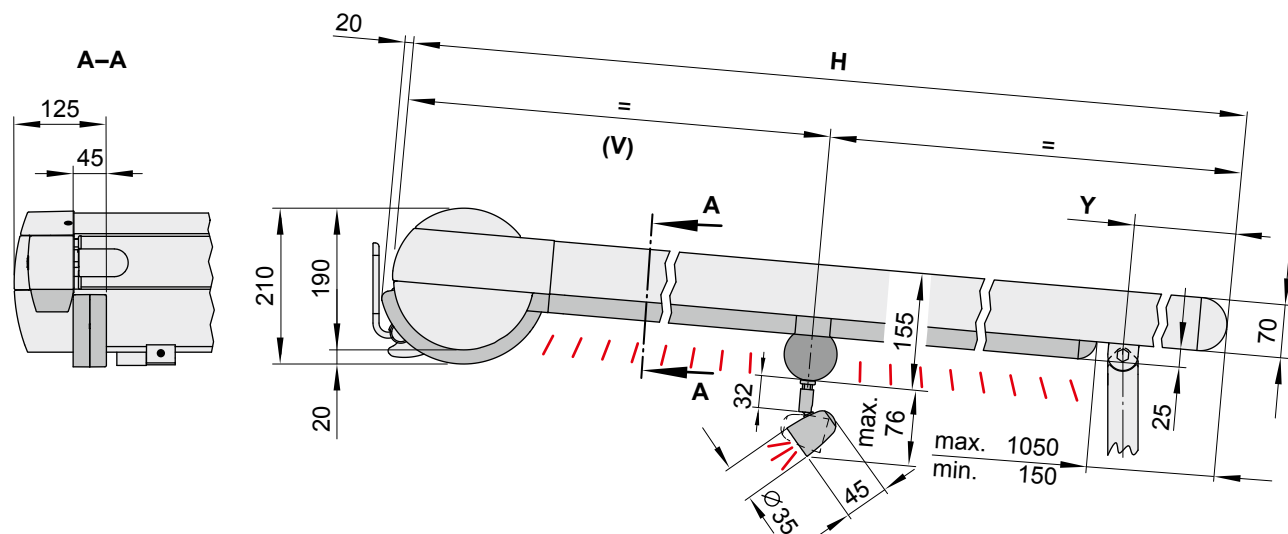
Bespoke dimensions are available on request. Dimensions: min. = 700 mm, max. = H – 1590 mm

Y = distance from post centre to leading edge of front profile. Dimensions: min. = 100 mm, max. = 1000 mm dimensions in mm

Dimension overview lighting options

Option 4: LED-Spots in the cover support tube, electronic components in the cover support tube

Option 5: LED-Spots in the cover support tube and LED-Line in the guide tracks, electronic components in the cover support tube



H = *order dimension* = extension

V = distance from the rear of the cassette to the centre of the cover support tube. Standard: centred ($V = H \div 2$).

Bespoke dimensions are available on request. Dimensions: min. = 700 mm, max. = H – 1590 mm

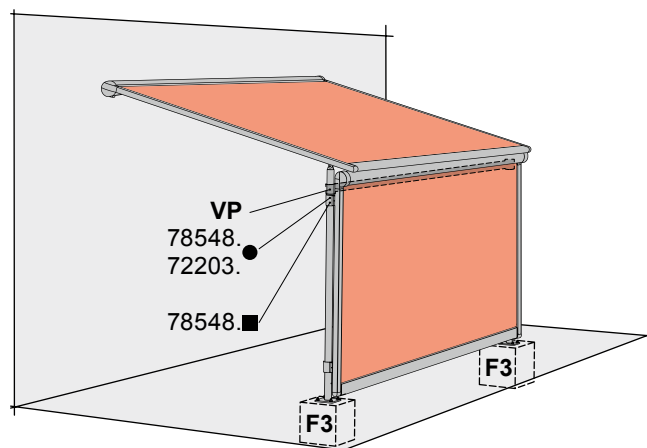
Y = distance from post centre to leading edge of front profile. Dimensions: min. = 100 mm, max. = 1000 mm dimensions in mm

In units without cover support tube

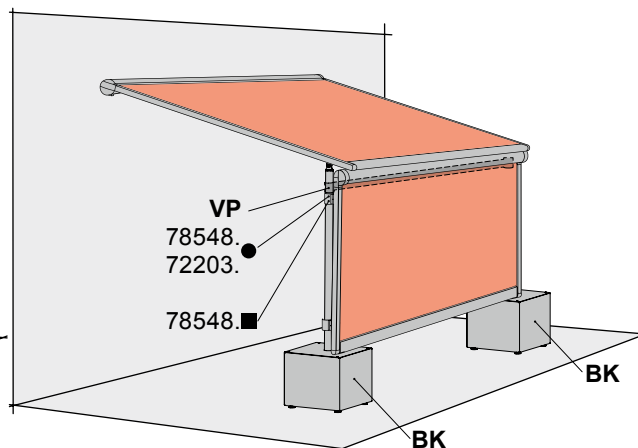


Combination Possibilities

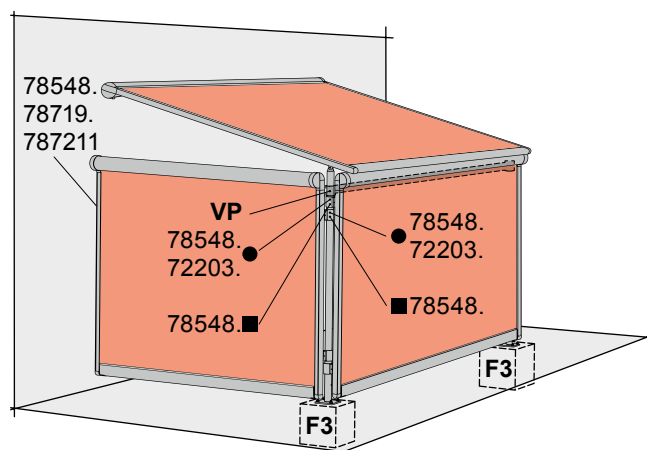
Example with markilux 776 tracfix / 876 tracfix (optionally with panorama window)



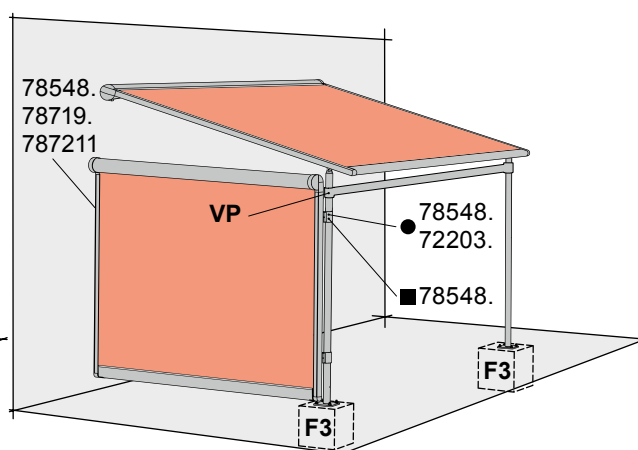
vertical cassette blind at the front



vertical cassette blind at the front, support posts with stabilisation boxes



combination with vertical cassette blinds both at the side and at the front



installation of a vertical cassette blind at the side and obligatory cross member between support posts

N.B! A vertical roller blind may only be installed at the side or the front if a stabilizing profile (VP) has been fitted.

Further possible combinations

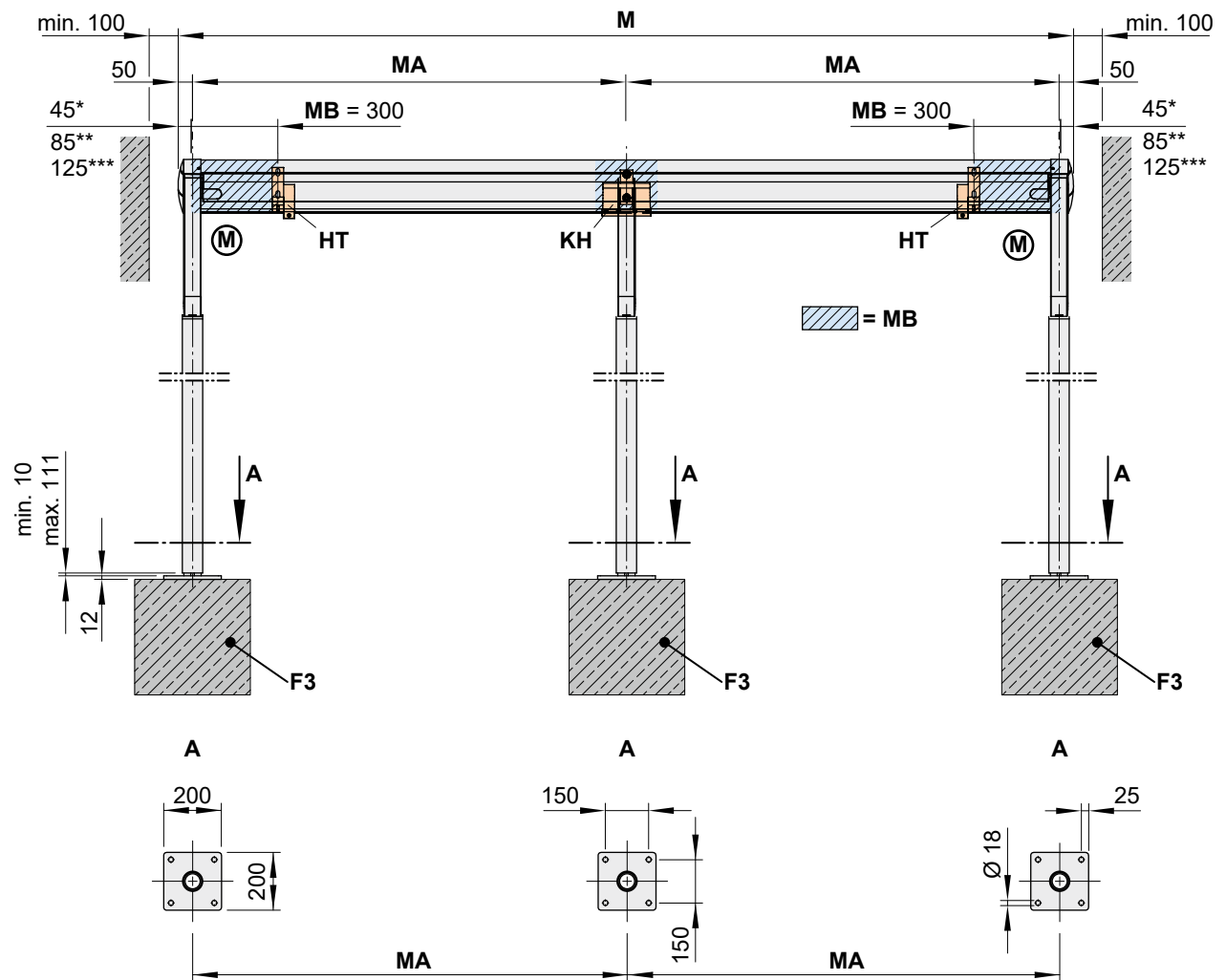
- markilux 790 at the side (cover optionally with angled top edge)
- markilux 790 at the front between support posts
- pergola fitted to the markilux syncra or markilux construct
- Other possible combinations are available on request.

- 72203.** = post fixture guide track (round support post)
78548. = flat track bracket
78719. = additional angled bracket, bearing / gearbox / motor side
787211 = accessories for two angled brackets
BK = stabilisation boxes (600 × 600 × 525 mm)

- F3** = concrete footing
VP = cross member
 ● = round post
 ■ = square post

Overview of fixture dimensions

Reveal fixture of a coupled unit

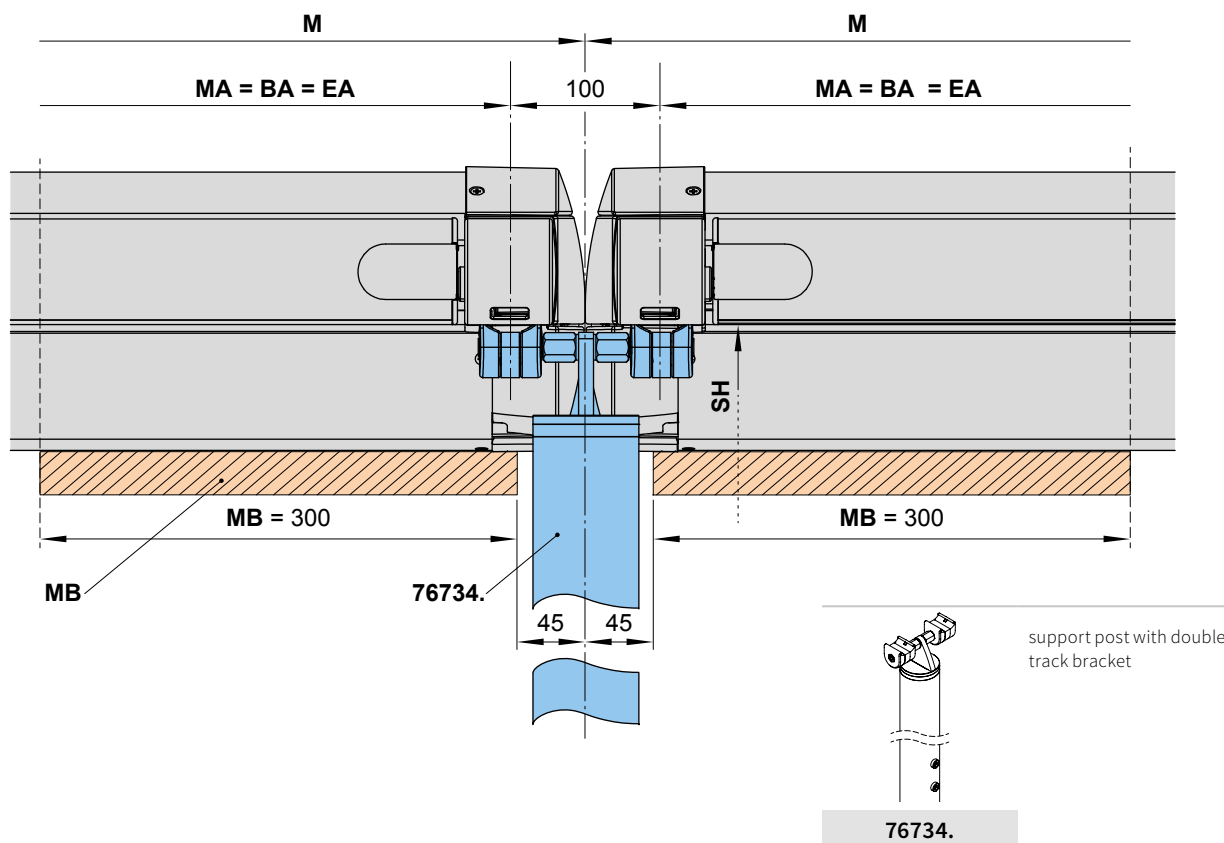


N.B! In the case of reveal fixture a distance of at least 100 mm must be left free on each side of the awning.

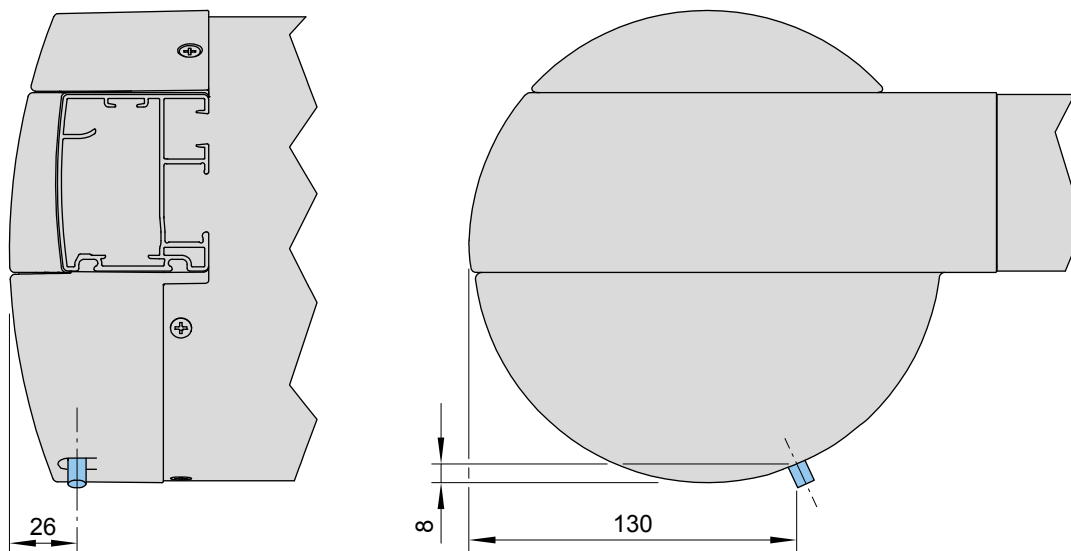
- *** = dimensions for rear cable exit on motor side (standard)
- **** = dimensions for bottom cable exit on motor side (optional)
- ***** = dimensions for cable duct in case of lighting
- F3** = concrete foundation. Please view section “Concrete foundations”
- HT** = bracket
- KH** = coupling bracket
- M** = overall awning width = MA + 10 cm
- (M)** = operation side, motor drive
- MA** = **order dimension** = awning fixture width = fixture width
- MB** = bracket fixture range

dimensions in mm

01 Overview of fixture dimensions, double track bracket for single units



Motor cable exit point



76734. = support post with double track bracket

BA = width between fixture points

EA = single unit

M = overall awning width = MA + 10 cm

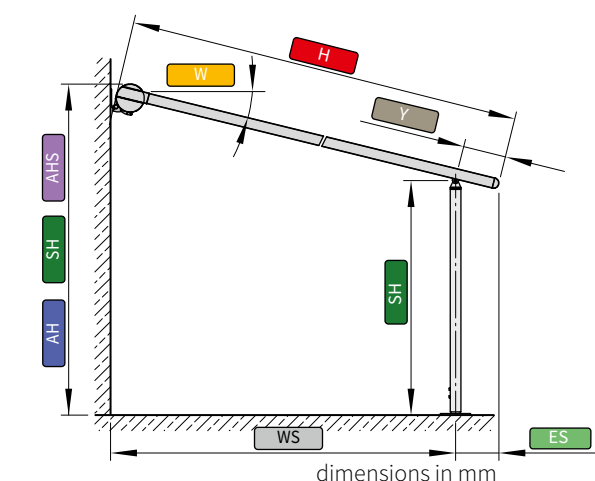
MA = *order dimension* = awning fixture width = fixture width

MB = bracket fixture range

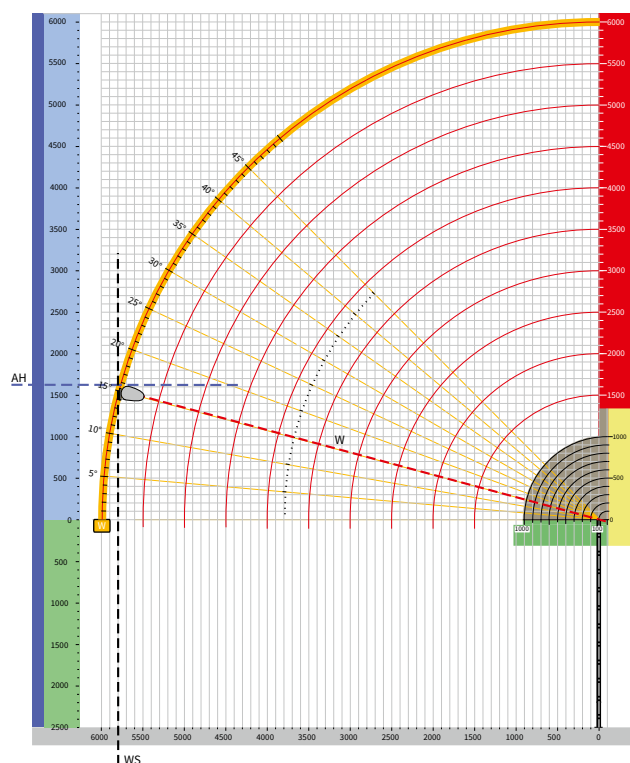
dimensions in mm

Calculation of the approximate fixture height, examples

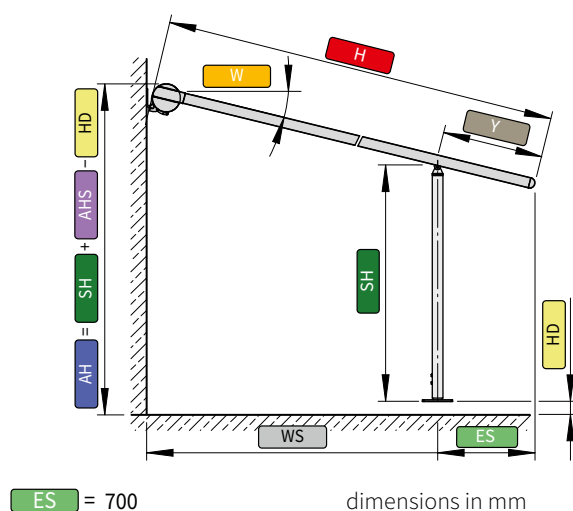
Example 1: front support posts pushed as far forward as possible, $Y = 100$ mm



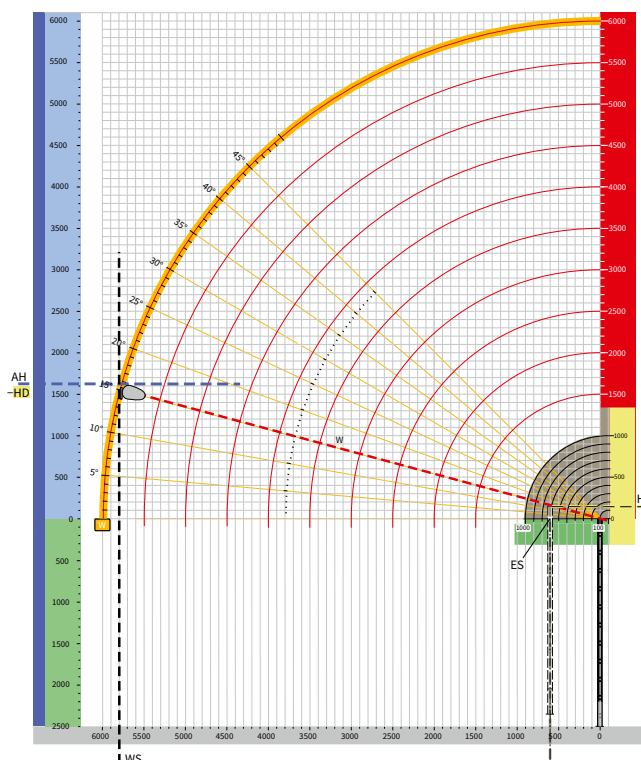
- ES = 100
- W = 15°
- H = 6000
- WS = 5800
- Y = 100
- SH = 2500
- AHS = 1620
- AH = SH + AHS = 2500 + 1620 = 4120



Example 2: front support posts pushed back, $Y \geq 100$ mm and ≤ 1000 mm



- ES = 700
- W = 15°
- H = 6000
- WS = 5200
- Y = 700
- HD = 130
- SH = 2500
- AHS = 1620
- AH = SH + AHS - HD = 2500 + 1620 - 130 = 3990



ES = centre of support post to the leading edge of the front profile

W = pitch

H = extension

WS = distance from wall ↔ support post

Y = distance front support posts can be moved back

HD = difference to the fixture height

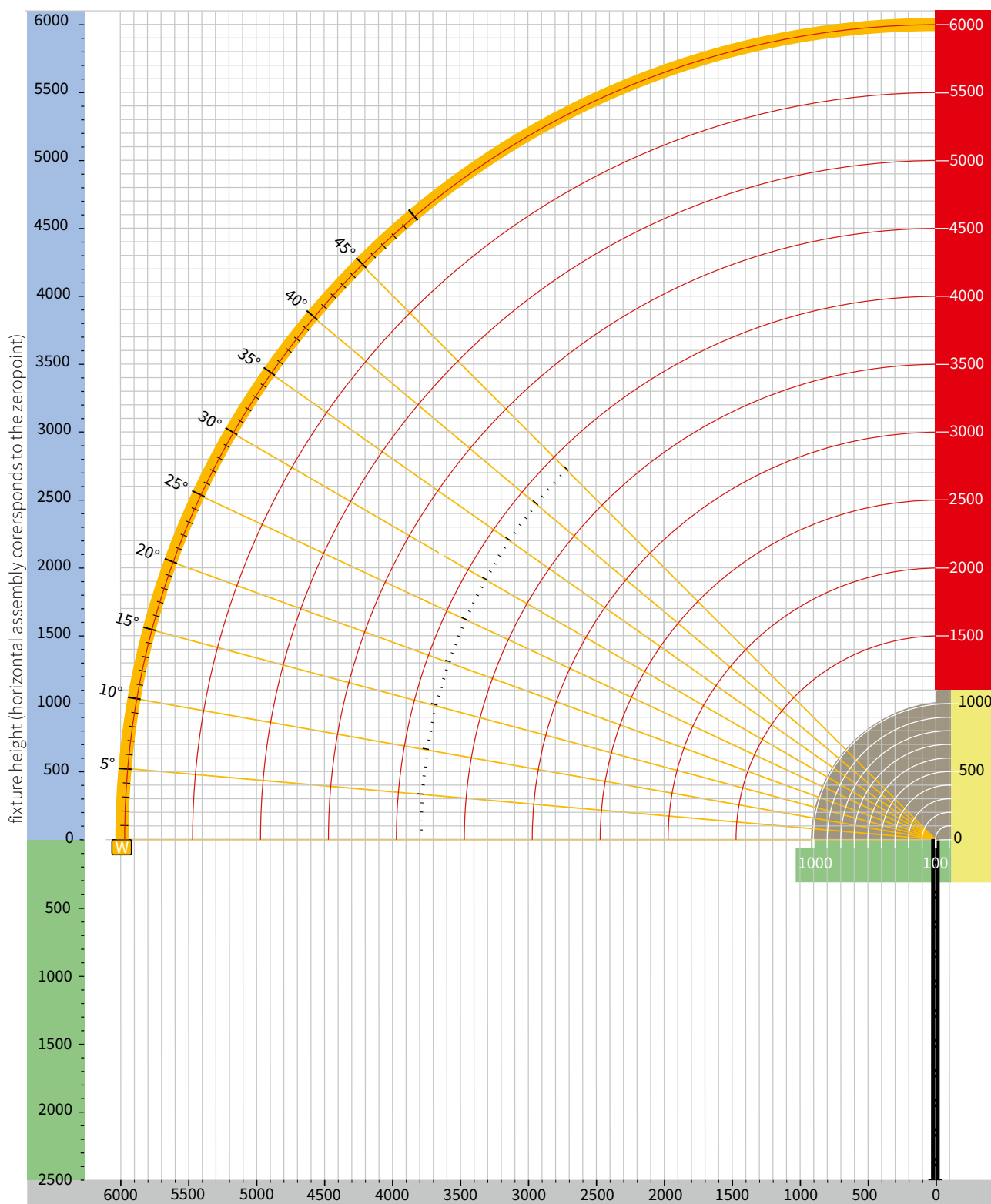
SH = support post height, standard 2500 mm

AHS = fixture height from the top edge of the support post

AH = fixture height

01 Calculation of the approximate fixture height

Drawing template



N.B! An on-line tool to calculate the installation measurements can be found in the protected area of the website, markiluxPRO.

dimensions in mm