



Cassette awning

markilux MX-3

The sturdy cassette awning with a slender figure and contrasting visual features from round to square.



[markilux.com](https://www.markilux.com)

markilux
safe timeless beautiful

01

Product characteristics

Wind resistance class 2

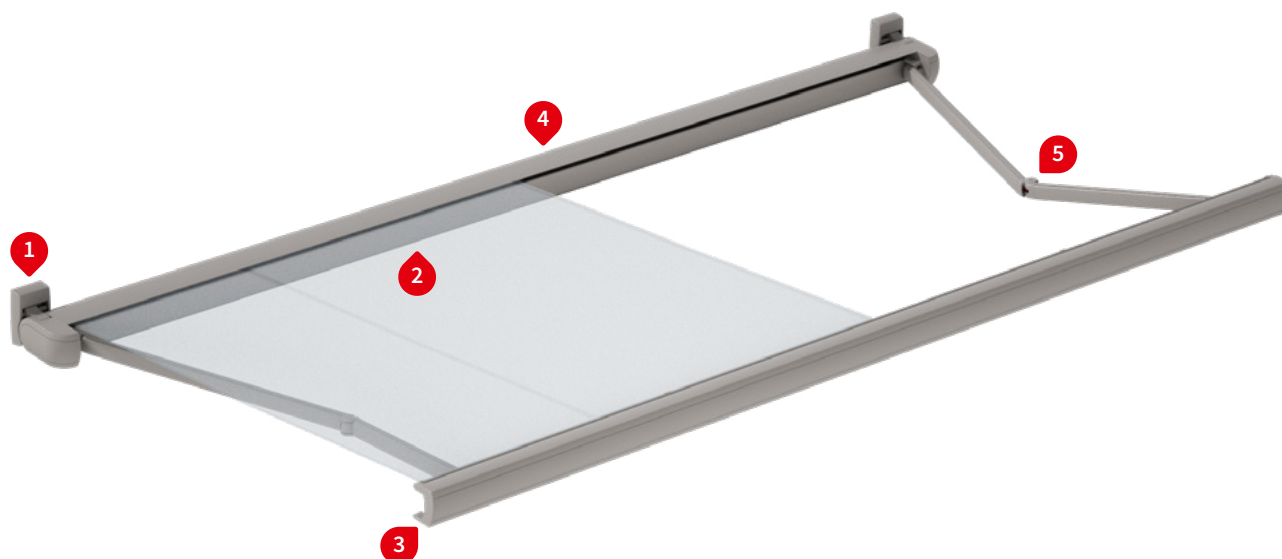
Beaufort 5 → 7.5–10.4 m/s → 28–37 km/h → 17–23 mph

02

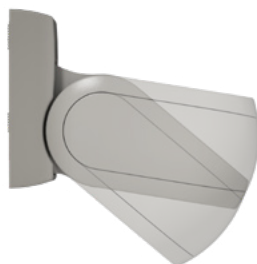
03

04

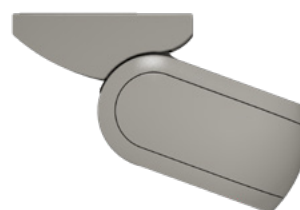
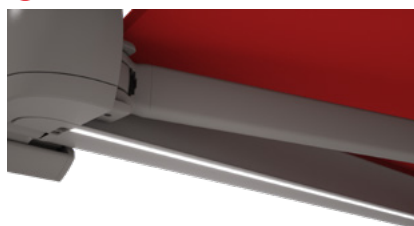
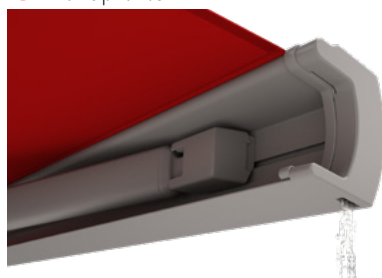
05



1 Face fixture

1 Face fixture,
maximum pitch of 35°

1 Top fixture

1 Top fixture,
view from the rear2 LED-Line recessed in the cassette ¹⁾2 LED-Spots underneath the
cassette ¹⁾3 Unique water drainage system in the
front profile4 Wall sealing profile ¹⁾5 Bionic tendon made of high-tech fibres
for optimum power transference

1) optional configuration

Product characteristics

Description

- a slender, folding-arm full cassette awning exhibiting excellent technological features, which enables areas up to 6 m wide to be shaded.

Special features

- self-supporting cassette profile with the brackets installed at each end of the awning – therefore suitable for bridging larger distances
- cassette with arms situated in front and at each end, which – when the awning is closed – are encompassed fully by the front profile lending a harmonious overall appearance to the awning
- the cassette obscures the view of the roller tube when the awning is extended
- option of directional LED-Line fitted to the underside of the cassette which provide an appealing atmosphere in the evening
- various screen profile and awning colours can be combined
- screen profile also available with exclusive coating in the “Selection MX colour selection” the brackets are hidden unobtrusively behind the awning

Dimensions

- cassette in the standard version: depth 230 mm, height 120 mm
- single unit: minimum width 183 cm at the smallest projection of 150 cm, maximum width 500 cm at the largest projection of 350 cm or 600 cm at a maximum projection of 300 cm

Roller tube and lateral bearings

- round roller tube Ø 85 mm with keyway, galvanised steel – excellent stability, ensures near perfect cover performance even at the largest widths
- the arm bearer is made of die-cast aluminium, powder coated, with integrated, infinitely variable pitch setting-mechanism

Awning profiles

- extruded aluminium, in façade quality, powder coated
- two-piece cassette with clever inner profile – providing the awning cover with optimum protection against the elements
- the lower cassette profile has a slot into which the LED Line can be recessed
- front profile, harmoniously rounded at the front with integrated gutter

Folding arms

- profiles in extruded aluminium, in façade quality, powder coated
- moving parts made of drop-forged aluminium – the arms are therefore extremely fracture resistant
- pivot bolts in stainless steel run in Teflon-coated bronze bushes - practically maintenance free, virtually silent and extremely hard wearing
- power transference via the innovative bionic tendon at the elbow joint, made of high tensile, high-tech fibres – low in friction, noiseless, insensitive to corrosion and UV resistant

Side caps

- the end cap insert sections are made of high-quality plastic, powder coated or in a polished chrome finish
- the front profile end caps are made of high-quality plastic, powder coated, with water drainage holes

Fixture brackets

- face fixture, top fixture, eaves fixture
- extruded aluminium, powder coated
- also available in individual widths (on request)
- including caps made of high quality plastic to cover the face or top fixture brackets and their fixture bolts
- pitch range 5°–35° (face fixture) or 5°–70° (top or eaves fixture), infinitely variable
- spacer plates, stand-off brackets and other accessories are available

01 Frame, end cap insert and styling panel colours

markilux awning colours without surcharge

traffic white, RAL 9016

metallic aluminium, RAL 9006

off-white textured finish, 5233 ¹⁾



stone grey metallic, 5215 ¹⁾

anthracite metallic, 5204 ¹⁾

Havana brown textured finish, 5229 ¹⁾



Non-standard powder-coated finish

Bespoke frame colours incur a surcharge – matt, metallic, finely textured and pearl finishes as well as other colour ranges (DB, Tiger etc.) on request. All frame colours are available at a surcharge with enhanced corrosion protection.

¹⁾ textured finish

Combination Possibilities

All standard styling panel colours can be combined at will with the standard frame colours ²⁾

Frame stone grey metallic, 5215

Styling panel / end cap insert anthracite metallic, 5204



Frame off-white textured finish, 5233

Styling panel / end cap insert anthracite metallic, 5204



Frame traffic white, RAL 9016

Styling panel / end cap insert metallic aluminium, RAL 9006



Frame anthracite metallic, 5204

Styling panel / end cap insert stone grey metallic, 5215



²⁾ depictions by way of example; The styling panel and end cap insert colours must be the same colour. Colours may differ slightly from those depicted in both hue and finish.

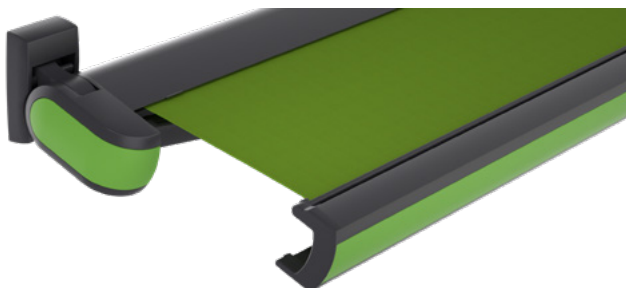
Additional styling panel and end cap insert colours

The additional styling panel colours can be combined at will with all the standard frame colours ¹⁾

Styling panel / end cap insert yellow green, RAL 6018

Frame anthracite metallic, 5204

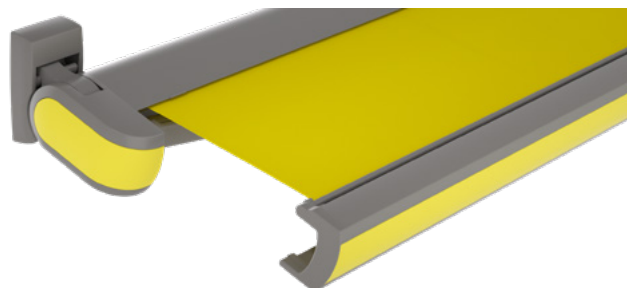
Awning cover 325 06



Styling panel / end cap insert sulphur yellow, RAL 1016

Frame stone grey metallic, 5215

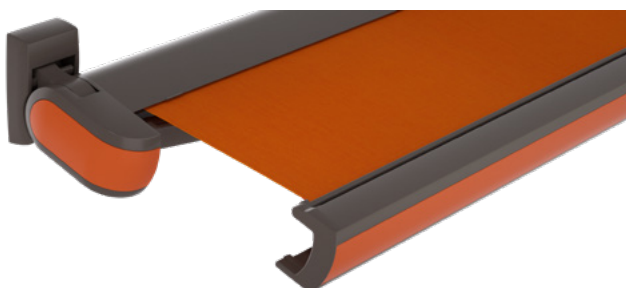
Awning cover 324 71



Styling panel / end cap insert red orange, RAL 2001

Frame Havana brown textured finish, 5229

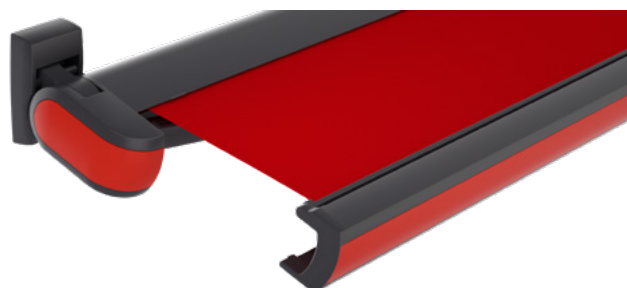
Awning cover 309 12



Styling panel / end cap insert traffic red, RAL 3020

Frame anthracite metallic, 5204

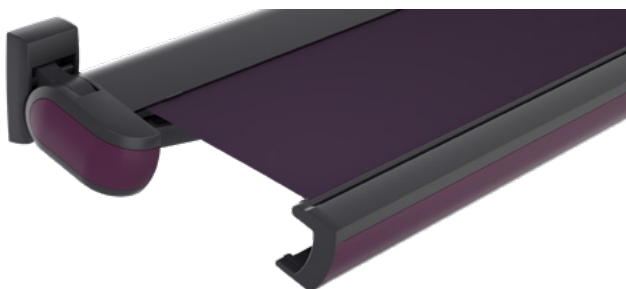
Awning cover 310 03



Styling panel / end cap insert purple violet, RAL 4007

Frame anthracite metallic, 5204

Awning cover 310 54



Styling panel / end cap insert pearl white, RAL 1013

Frame off-white textured finish, 5233

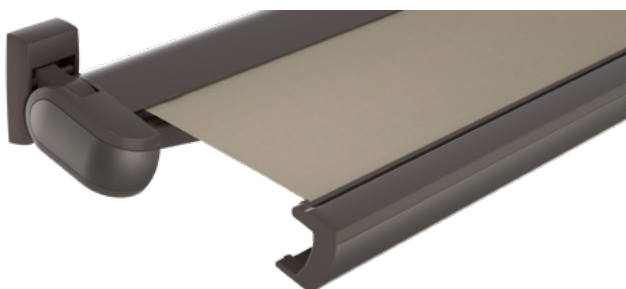
Awning cover 309 37



Styling panel / end cap insert pearl mouse grey, RAL 7048

Frame Havana brown textured finish, 5229

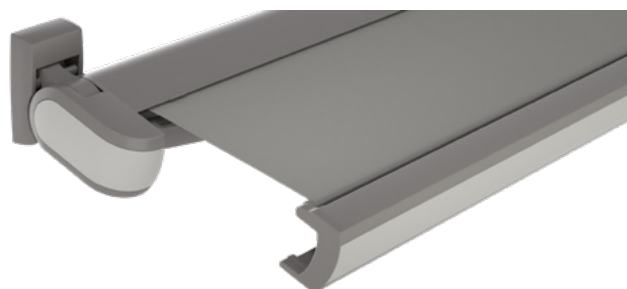
Awning cover 314 87



Styling panel / end cap insert agate grey, RAL 7038

Frame stone grey metallic, 5215

Awning cover 315 92



¹⁾ depictions by way of example; The fabric and styling panel in a matching colour; styling panel and end cap insert colours must be the same colour. Colours may differ slightly from those depicted in both hue and finish.

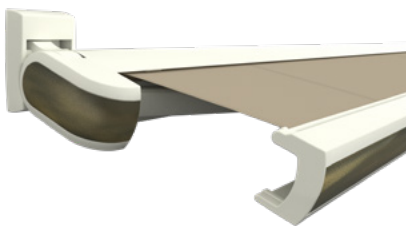
01 Additional Selection MX screen profile colours

Recommended colour combinations

SMX-01 Copper green patinated
Frame Anthracite metallic 5204
Awning cover 310 58

SMX-02 Brass dark-patinated
Frame Off-white textured finish 5233
Awning cover 324 49

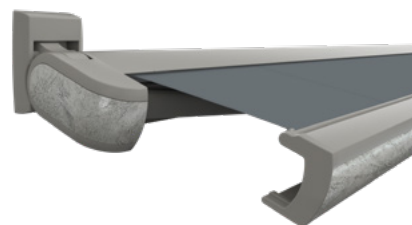
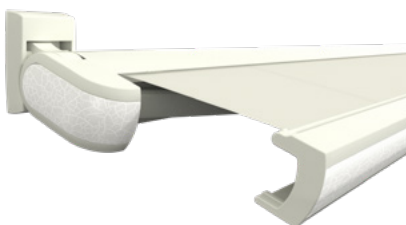
SMX-03 Bronze dark-patinated
Frame Havana brown textured finish 5229
Awning cover 309 47



SMX-04 Matt black/silver effect paint
Frame Anthracite metallic 5204
Awning cover 310 28

SMX-05 Matt white/silver effect paint
Frame Off-white textured finish 5233
Awning cover 310 09

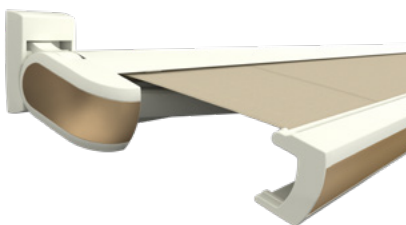
SMX-06 Silver grey effect paint
Frame Stone grey metallic 5215
Awning cover 310 18



SMX-07 Amber orange metallic matt
Frame Havana brown textured finish 5229
Awning cover 314 83

SMX-08 Pebble beige metallic matt
Frame Off-white textured finish 5233
Awning cover 314 87

SMX-09 Ruby red metallic matt
Frame Anthracite metallic 5204
Awning cover 325 13

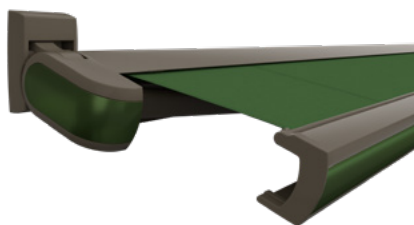


SMX-10 Emerald green metallic matt
Frame Havana brown textured finish 5229
Awning cover 325 16

Notes on selecting colours from markilux Selection MX

With its coating, every screen profile in the Selection MX colour range is unique. In a complex procedure, an exclusive look is created with several layers of paint. During the process, the resulting colour and colour structure are influenced by different factors.



For technical reasons, slight shading, deviations in the degree of shine and colour as well as slight colour variations between coats of paint in the same tone can occur. The colour structure is always individual particularly in the case of multi-layer coatings. The mixed colour tone SMX-10 Emerald green-metallic is an interference colour, which has an iridescent effect depending on the incidence of light and the viewing angle.



Colours may differ slightly from those depicted in both hue and finish.

Dimensions and configuration options


Single unit


Order dimensions		Awning width							Minimum widths		
		250	300	350	400	450	500	550	600	Motor 	Crank handle 
		183 250	251 300	301 350	351 400	401 450	451 500	501 550	551 600		
H	150	1)								191	183
	200	1)								233	233
	250	—	1)							283	283
	300	—	—	1)						333	333
	350	—	—	—	1)			—	—	383	383

dimensions in cm

1) = please note the minimum widths!

H = projection

 = 2 folding arms,
2 brackets

 = 2 standard arms

Operation

	standard	optional
manual operation	✓	—
spring-assisted crank handle	—	✓
hard-wired motor	—	✓
silentec motor (optionally with an external io / RTS receiver)	—	—
radio-controlled motor io, 868 MHz	—	✓
radio-controlled motor RTS, 433 MHz	—	✓
radio-controlled motor RTS, 433 MHz with manual override	—	—

Coupled Awning

not available

Awning cover

	fabric range no.	standard	optional
sunvas	301.. / 309..–315..	✓	—
perla	370 ..	—	✓
sun silk	324.. / 325.. / 328.. / 369..	✓	—
perla FR	374.. / 375..	—	✓
perfortex	331.. / 332..	—	—
transolair	338.. / 339 ..	—	—
vuscreen Alu	317..	—	—
Soltis Perform 92	92-20..	—	—
glass fibre screen	272..	—	—
valance		—	—

Shadeplus / drop valance

not available

01

Optional accessories

02

LED-Line recessed in the cassette

03

LED-Spots underneath the cassette

04

wall sealing profile, up to a maximum awning pitch of 35°

05

infrared heater 2500 W

infrared heater 2500 W with integrated radio-controlled receiver, 868 MHz io

automatic controls (light, wind, rain)

N.B! Important background information can be found in the chapter "Optional Accessories".**Fixture options**

face fixture bracket with cover, left 100 mm 75885.

face fixture bracket with cover, right 100 mm 75886.

face fixture bracket left 300 mm 75877.

face fixture bracket right 300 mm 75878.

spreader plate A 430 × 160 × 12 mm 75326.

spreader plate B 300 × 400 × 12 mm 75325.

markilux panel 250 × 230 × 49 mm 76308.

markilux panel continuous 76380.

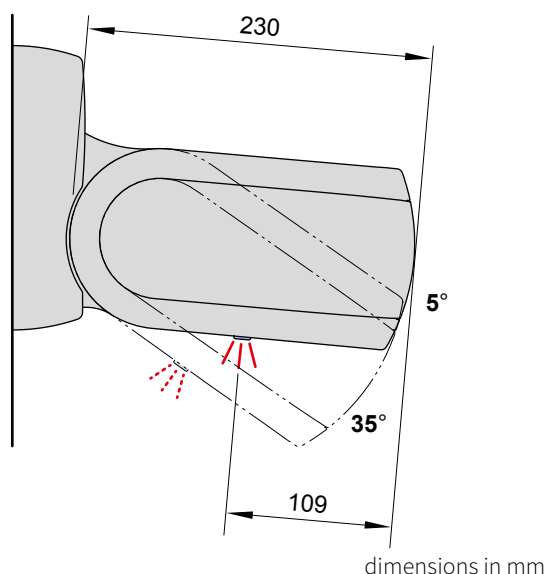
stand-off bracket 80–300 mm for face fixture
bracket 100 mm 72872.stand-off bracket 80–300 mm for face fixture
bracket 300 mm 77968.

top fixture bracket with cover, left 100 mm 75887.

top fixture bracket with cover, right 100 mm 75888.

eaves fixture bracket 90 mm, 150 mm plate 75889.

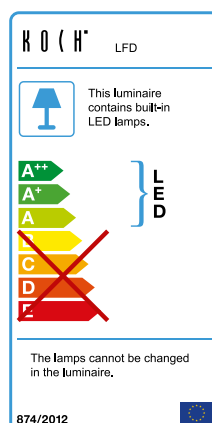
eaves fixture bracket 90 mm, 270 mm plate 71659.

flat plate and angled bracket for eaves fixture,
machine finish aluminium, 500 mm plate 716620spreader plate 260 × 60 × 12 mm 75383.
for eaves fixture bracket**Lighting options****LED-Line recessed in the cassette****Technical specification**

Operating voltage	230 V, 50 Hz
power output per metre	10 W / metre
number of LEDs per metre	120 LEDs/ metre
Light source	LED (12 V)
Number of transformers	1 unit
Light temperature	warm white
IP protection class	IP 44
Service life	approx. 15.000 h

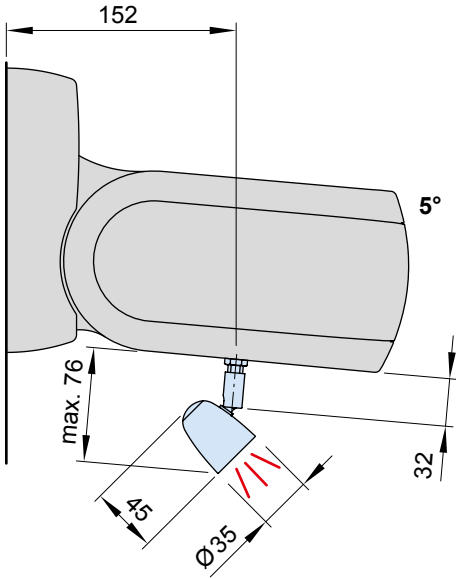
Controls**Standard Optional**

radio-controlled dimmer io, 868 MHz	✓	—
radio-controlled dimmer RTS, 433 MHz	✓	—

**Electrical connection:**power supply cable H05RN-F 3G1
(3 × 1 mm²) with open end

Lighting options

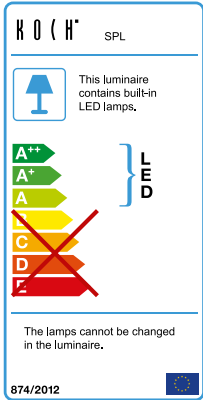
Directional LED spotlights underneath the cassette



dimensions in mm

Technical specification

Operating voltage	230 V, 50 Hz
power output per metre	5 W
Light source	LED (12 V)
Number of transformers	1 unit
Light temperature	warm white
IP protection class	IP 44
Service life	approx. 20.000 h

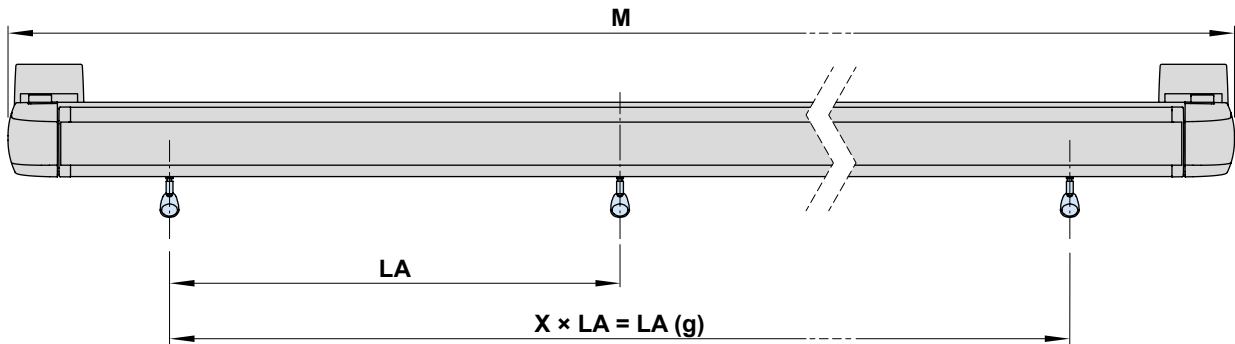


Controls

	Standard	Optional
Radio-controlled dimmer io, 868 MHz	✓	—
Radio-controlled dimmer RTS, 433 MHz	✓	—

Electrical connection:

power supply cable H05RN-F 3G1
(3 × 1 mm²) with open end



awning width	no. of spotlights	LA	LA (g)
195–250	3	75	150
251–300	3	98	196
301–350	3	98	196
351–400	4	98	294
401–450	4	98	294
451–500	5	98	392
501–550	5	98	392
551–600	6	98	490

LA (g) = distance between the spotlights (total)
M = order dimension = awning width
X = number of distances between the spots
(depends on size)

dimensions in cm

01 No of brackets | No. of fixing points

02

03

04

05

Order dimensions		Awning width							
		250	300	350	400	450	500	550	600
		195 250	251 300	301 350	351 400	401 450	451 500	501 550	551 600
BHT		No of brackets No. of fixing points							
W	10	2 6							
BP		A 2 16 B 2 8							
PA		2 8							
DA / DE	10	2 8							

dimensions in cm

The **pull-out forces** necessary for determining the correct fixing materials necessary to meet wind resistance class 2 (Beaufort 5) can be found in the password-protected dealer area of the markilux.com website under "Pull-out Forces".

BHT = bracket width

BP = spreader plate (A / B)

DA = eaves fixture bracket

DE = top fixture

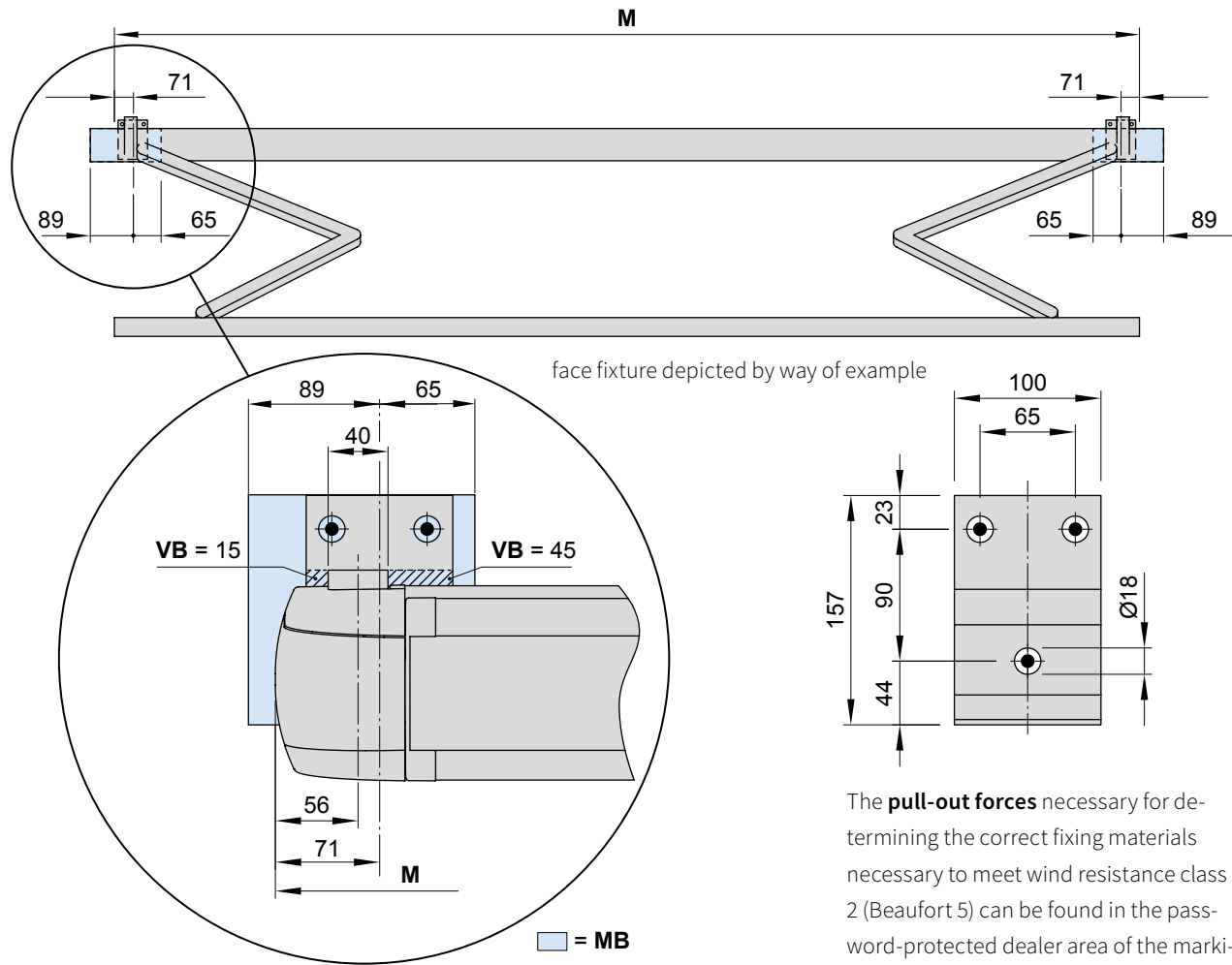
PA = markilux panel, fixture profile, width 250 mm

GB = top fixture bracket

W = face fixture bracket

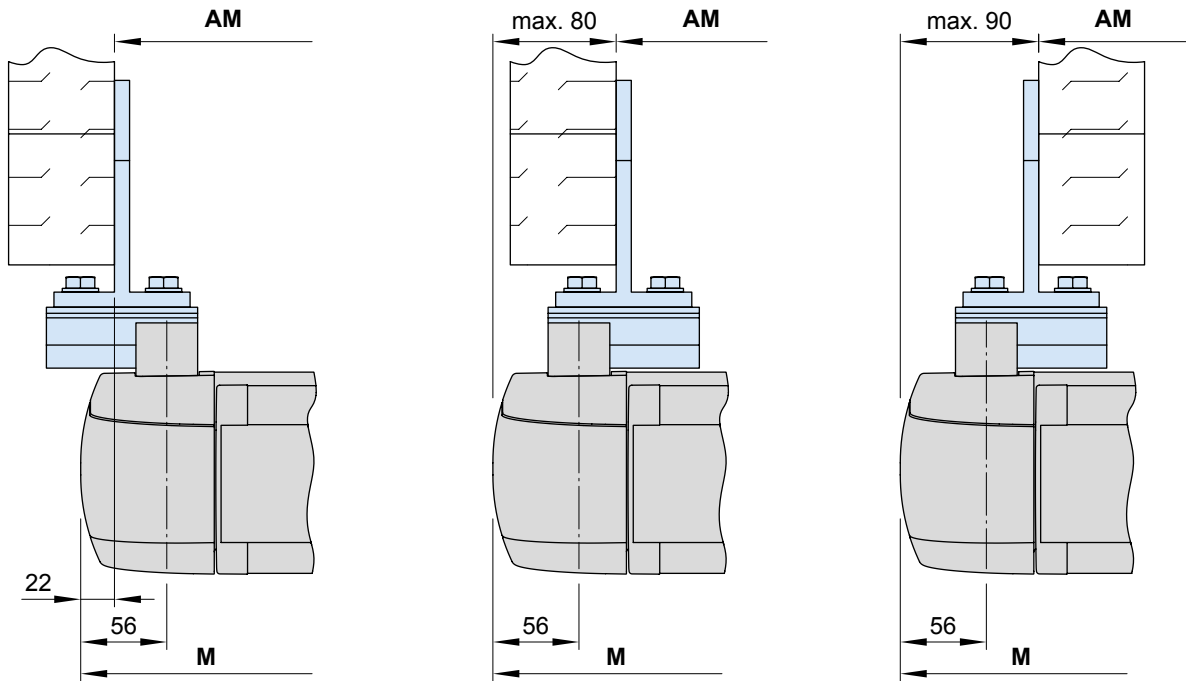
Bracket fixture range

Face and top fixture



The **pull-out forces** necessary for determining the correct fixing materials necessary to meet wind resistance class 2 (Beaufort 5) can be found in the password-protected dealer area of the markilux.com website under "Pull-out Forces".

Eaves fixture

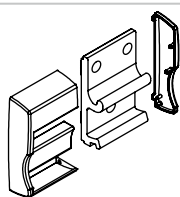


M = order width = awning width
 MB = bracket fixture range

VB = adjustment range face fixture bracket
 AM = installation dimensions
dimensions in mm

01 Face fixture

Fixtures, fittings and accessories

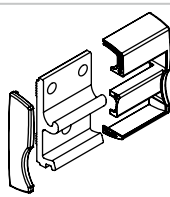


face fixture bracket
cover cap

left

100 mm

75885.

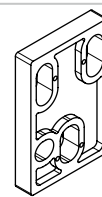


face fixture bracket
cover cap

right

100 mm

75886.

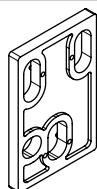


spacer plate

100 × 150 × 20 mm

N.B!
Stack to a max. height of
200 mm

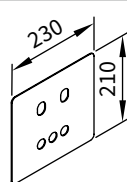
758831



spacer plate

100 × 150 × 12 mm

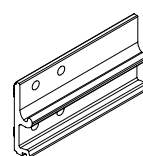
758841



cover plate
for spacer plate
and stand-off brackets
in the case of external
insulation

230 × 210 × 2 mm

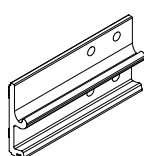
71843.



face fixture bracket left

300 mm

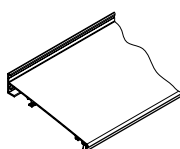
75877.



face fixture bracket right

300 mm

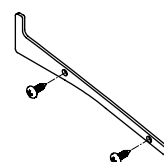
75878.



wall sealing profile incl.
brush seal

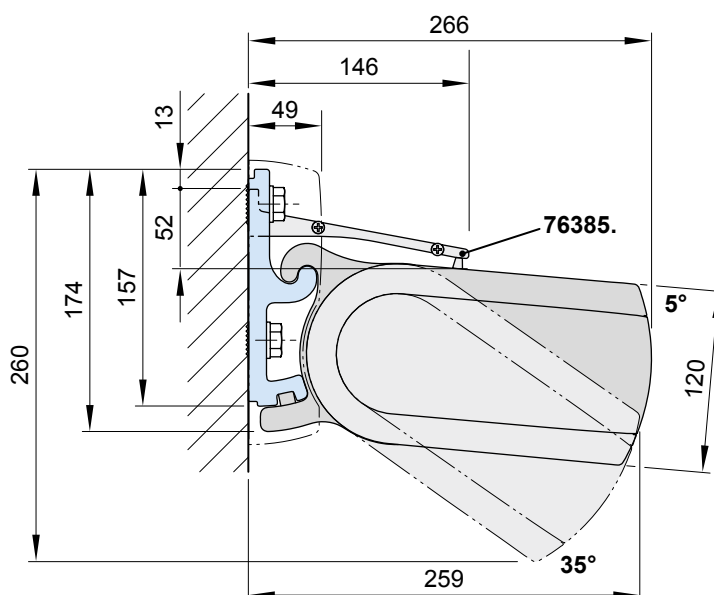
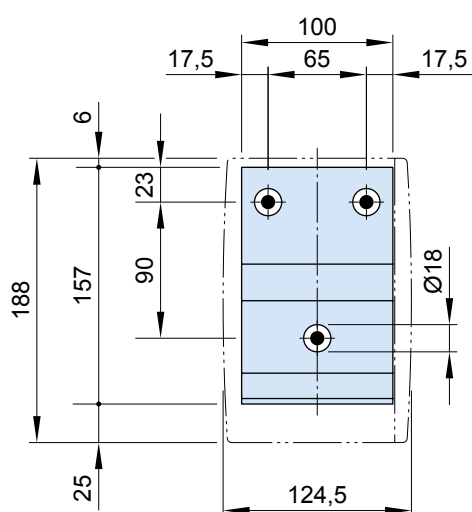
by the metre

76385. and 704241



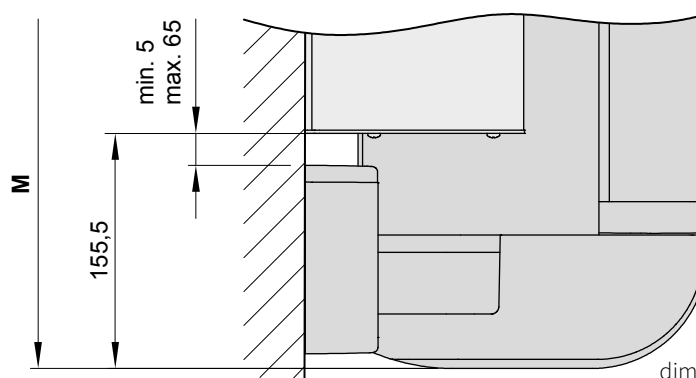
1 side plate including
2 pan-head self-tapping
screws for wall sealing
profile

76386. and 2 × 735611



76385. = wall sealing profile (standard width
= awning width (**M**) – 311 mm; up to
a maximum awning pitch of 35°)

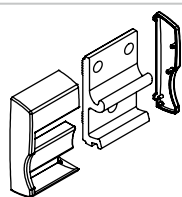
M = *order width* = awning width



dimensions in mm

Face fixture with spreader plate A

Fixtures, fittings and accessories

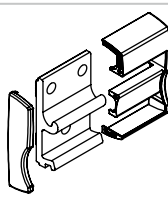


face fixture bracket
cover cap

left

100 mm

75885.

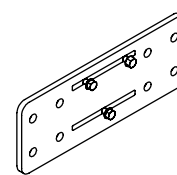


face fixture bracket
cover cap

right

100 mm

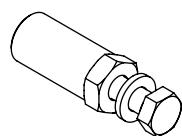
75886.



spreader plate A

430 × 160 × 12 mm

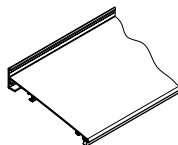
75326.



bolt reduction assembly

pack 10 pcs

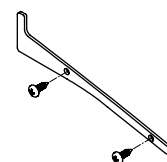
M 16 → M 12 | M 16 → M 10 | M 12 → M 10 | M 10 → M 10



wall sealing profile incl.
brush seal

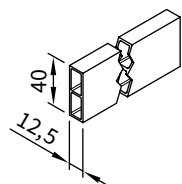
by the metre

76385. and 704241



1 side plate including
2 pan-head self-tapping
screws for wall sealing
profile

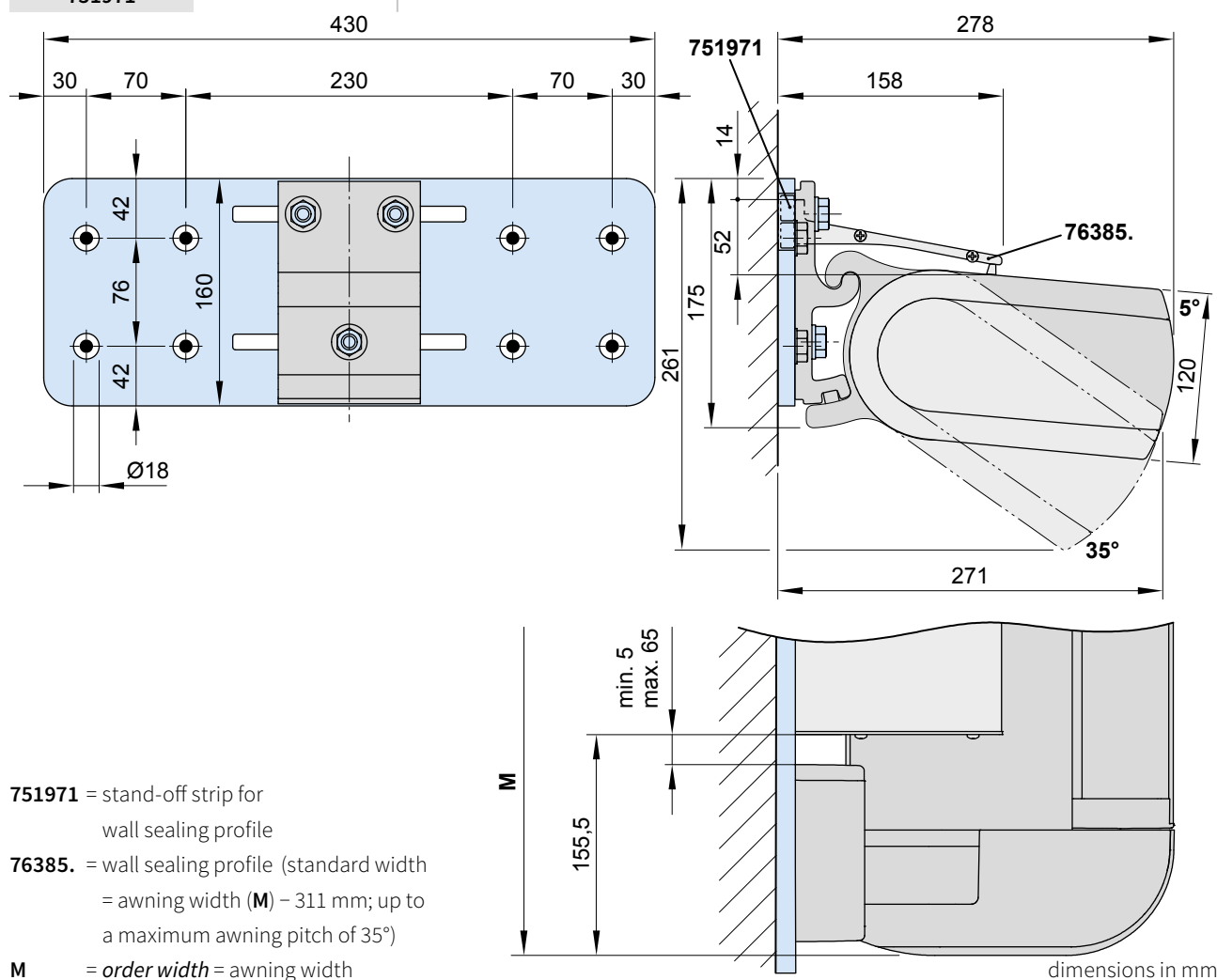
76386. and 2 × 735611



stand-off strip for
wall sealing profile

available by the metre

751971



01

Face fixture with spreader plate B

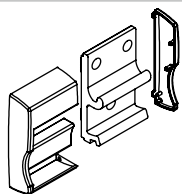
Fixtures, fittings and accessories

02

03

04

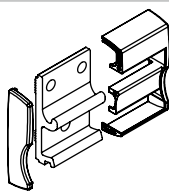
05

face fixture bracket
cover cap

left

100 mm

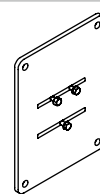
75885.

face fixture bracket
cover cap

right

100 mm

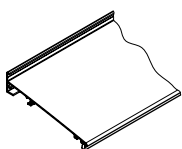
75886.



spreader plate B

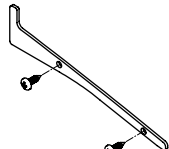
300 × 400 × 12 mm

75325.

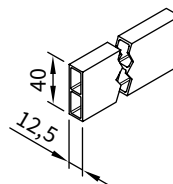
wall sealing profile incl.
brush seal

by the metre

76385. and 704241

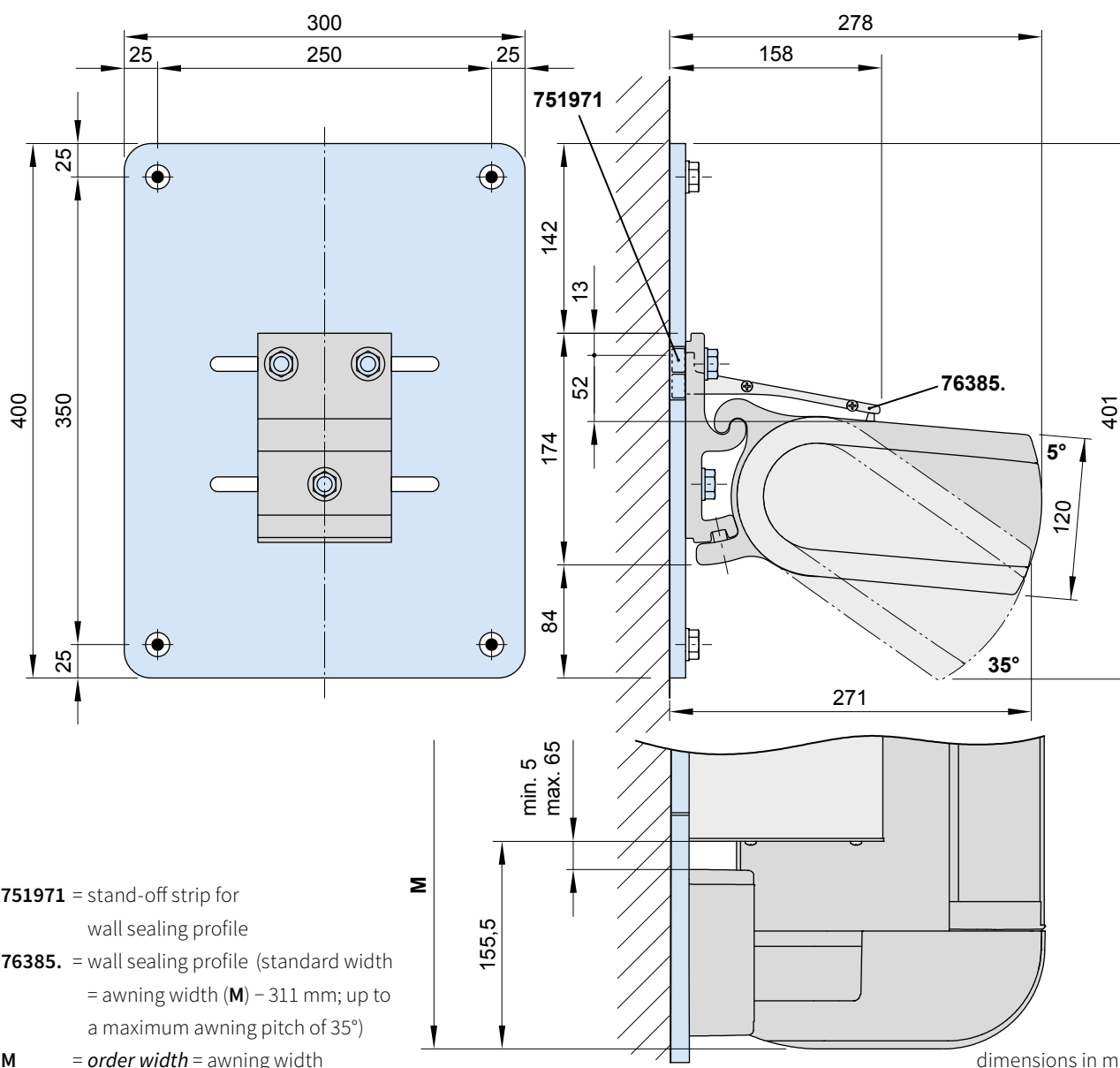
1 side plate including
2 pan-head self-tapping
screws for wall sealing
profile

76386. and 2 × 735611

stand-off strip for
wall sealing profile

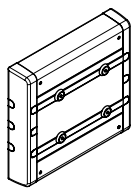
available by the metre

751971



Face fixture with markilux panel 250 mm

Fixtures, fittings and accessories

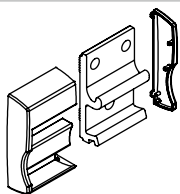


markilux panel
fixture profile,

with decorative profiles
and end caps

250 × 230 × 49 mm

76308.

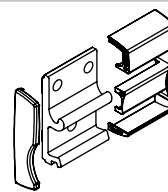


face fixture bracket
cover cap

left

100 mm

75885.

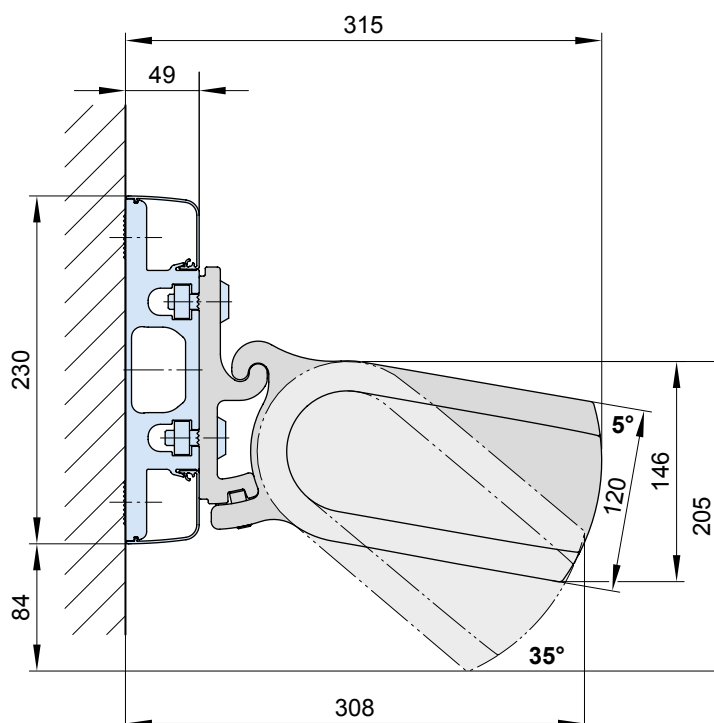
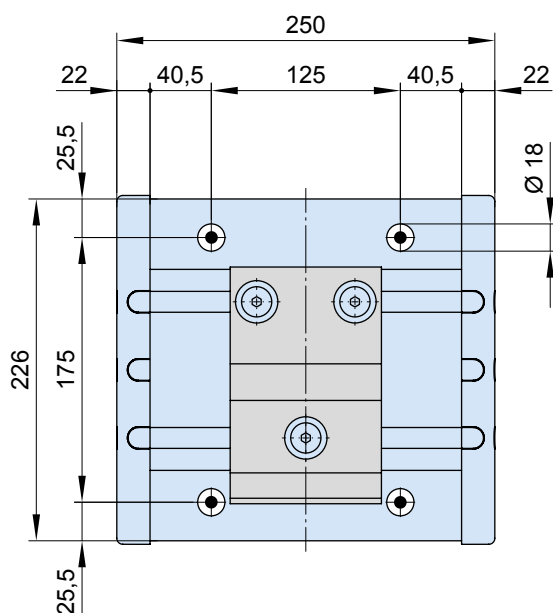


face fixture bracket
cover cap

right

100 mm

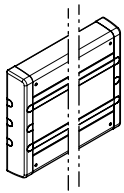
75886.



dimensions in mm

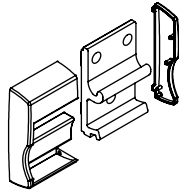
01 Face fixture with markilux panel continuous

Befestigung und Zubehör



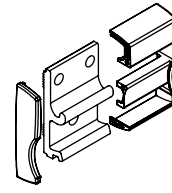
markilux panel
fixture profile,
with decorative profiles
and end caps
continuous

76380.



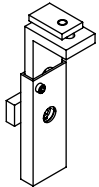
face fixture bracket
cover cap
left
100 mm

75885.



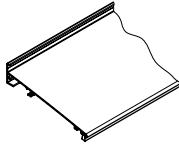
face fixture bracket
cover cap
right
100 mm

75886.



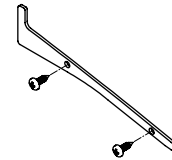
bracket
wall sealing profile
small

76468.



wall sealing profile incl.
brush seal
by the metre

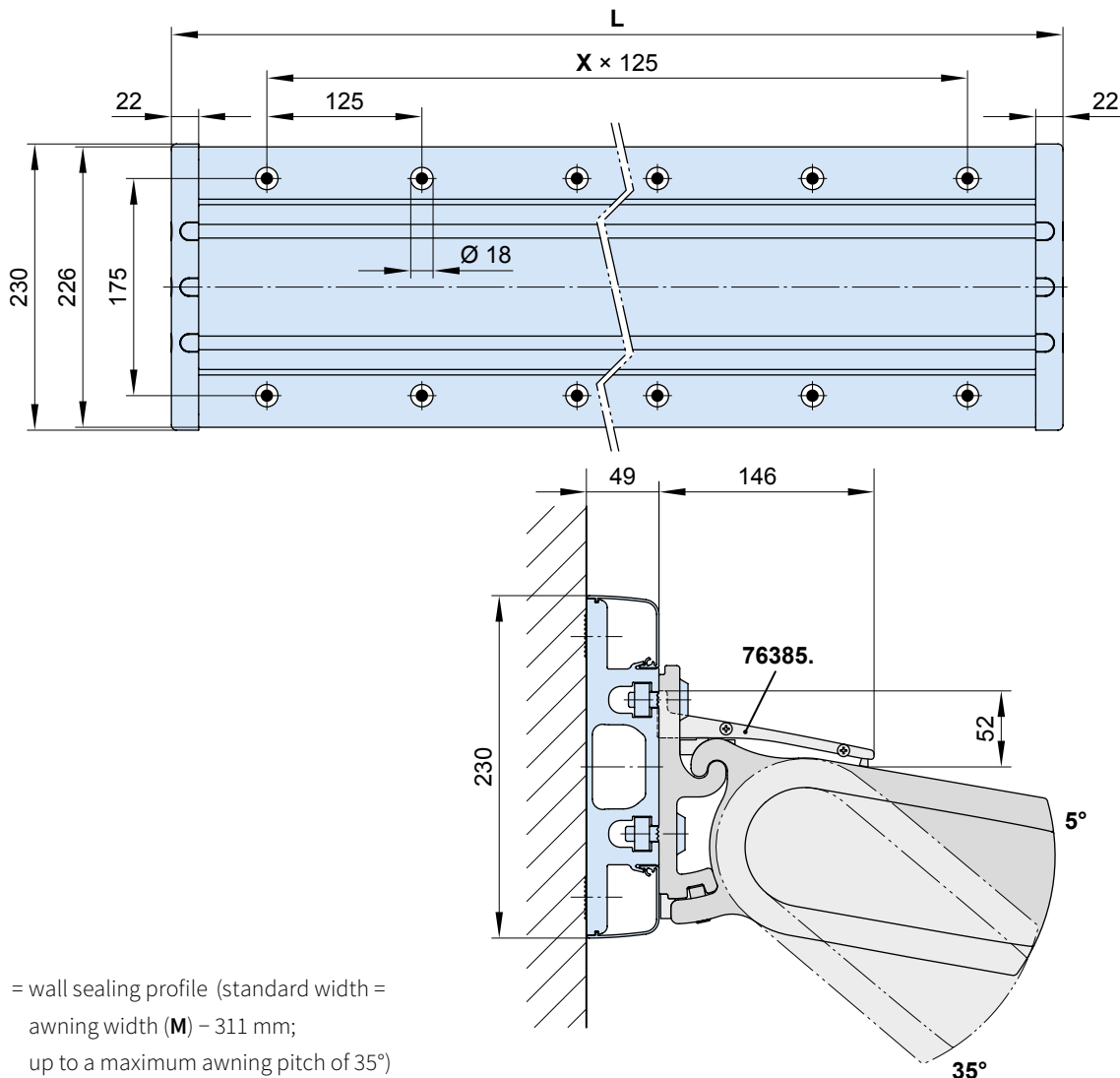
76385. und 704241



1 side plate including
2 pan-head self-tapping
screws for wall sealing
profile

76386. und 2 × 735611

As a **continuous fixture profile**, the markilux panel will always be supplied to order on the basis of a technical drawing prepared in the factory in accordance with the awning specification.



76385. = wall sealing profile (standard width =
awning width (**M**) – 311 mm;
up to a maximum awning pitch of 35°)

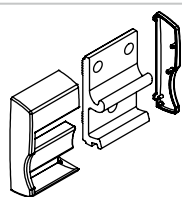
L = maximum width 7000 mm
(standard **L** = **M** + 20 mm)

X = fixing point separation, **by way of example**

dimensions in mm

Face fixture with stand-off bracket

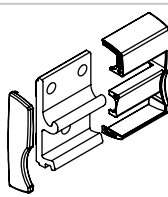
Fixtures, fittings and accessories



face fixture bracket
cover cap
left

100 mm

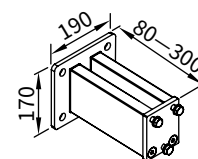
75885.



face fixture bracket
cover cap
right

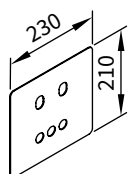
100 mm

75886.



stand-off bracket
for 100 mm face fixture
brackets
75885. and 75886.

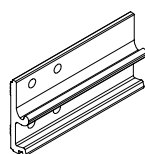
72872.



cover plate
for spacer plate
and stand-off bracket
72872.
in the case of external
insulation

230 × 210 × 2 mm

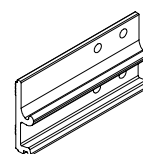
71843.



face fixture bracket left

300 mm

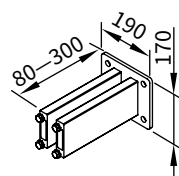
75877.



face fixture bracket right

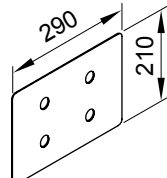
300 mm

75878.



stand-off bracket
for 300 mm face fixture
brackets
75877. and 75878.

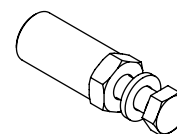
77968.



cover plate
for spacer plate
and stand-off bracket
77968.
in the case of external
insulation

290 × 210 × 2 mm

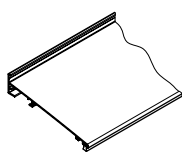
71841.



bolt reduction assembly

pack 10 pcs

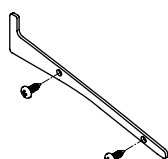
M 16 → M 12 | M 16 → M 10 | M 12 → M 10 | M 10 → M 10



Wall sealing profile
incl. brush seal
when installing with a
coverboard

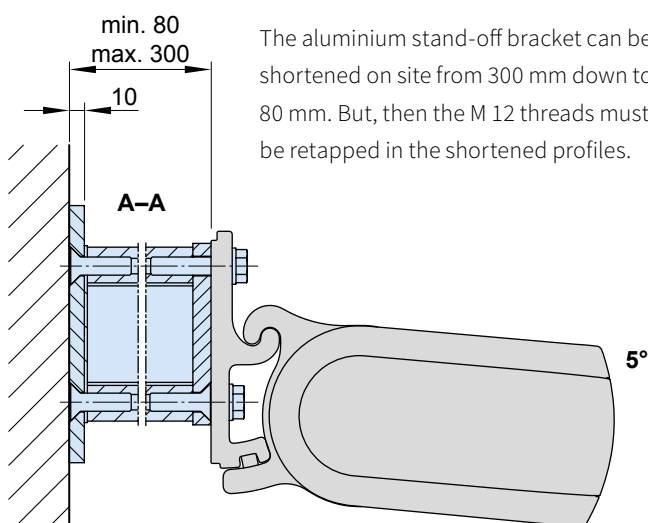
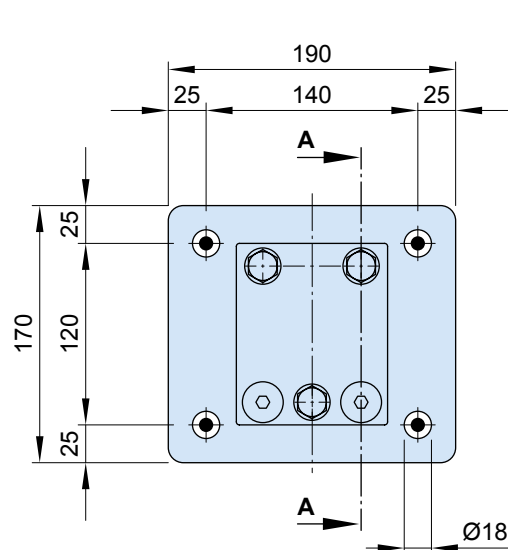
available by the metre

76385. and 704241



1 side plate including
2 pan-head self-tapping
screws for wall sealing
profile

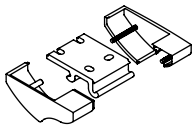
76386. and 2 × 735611



The aluminium stand-off bracket can be shortened on site from 300 mm down to 80 mm. But, then the M 12 threads must be retapped in the shortened profiles.

dimensions in mm

Fixtures, fittings and accessories

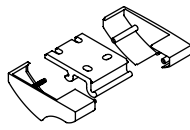


top fixture bracket
cover cap

left

100 mm

75887.

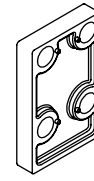


top fixture bracket
cover cap

right

100 mm

75888.

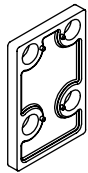


spacer plate

90 × 140 × 20 mm

N.B!
Stack to a max. height of
200 mm

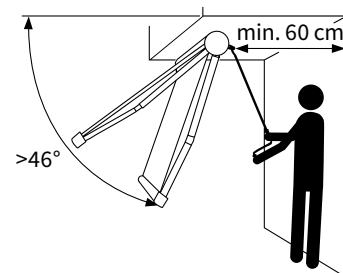
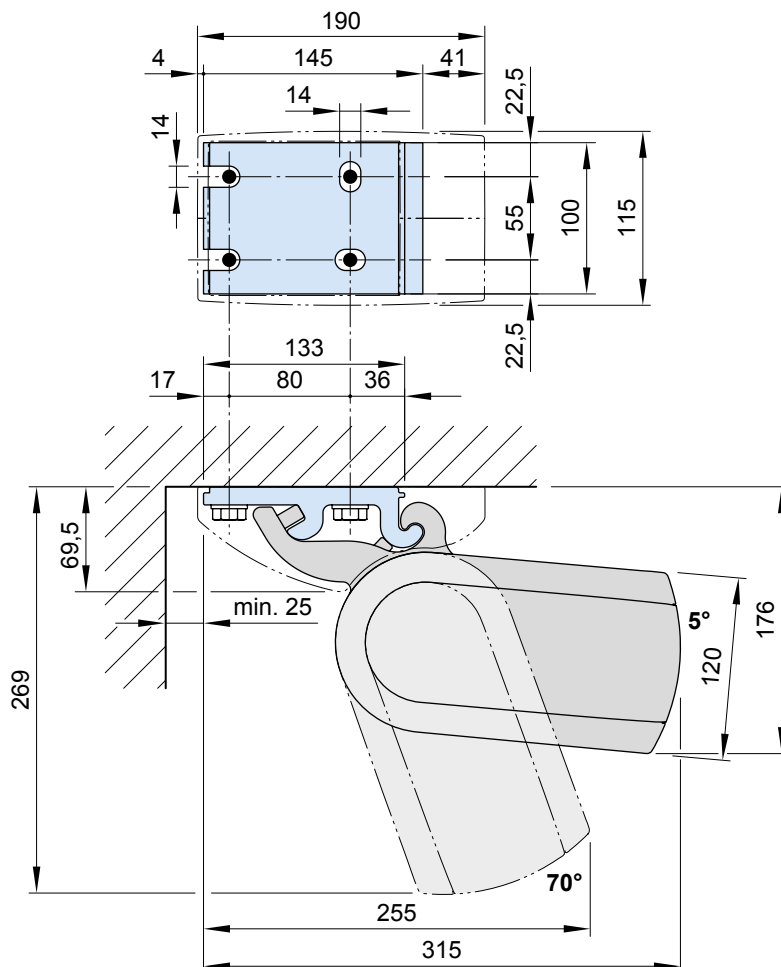
716311



spacer plate

90 × 140 × 12 mm

716411

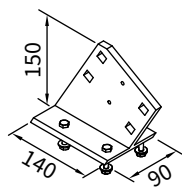


N.B! At a pitch of more than 46° to the horizontal there must be an area accessible behind the awning at least 60 cm deep to allow manual operation.

dimensions in mm

Eaves fixture

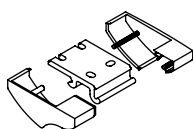
Fixtures, fittings and accessories



eaves fixture bracket

height of flat plate:
150 mm

75889.

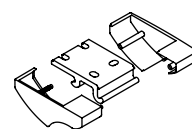


top fixture bracket

left

100 mm

75887.

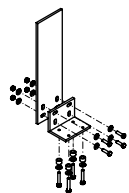


top fixture bracket

right

100 mm

75888.



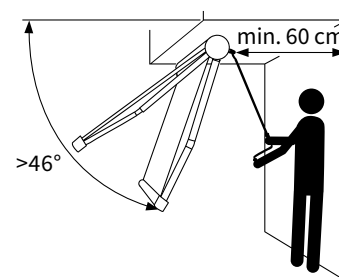
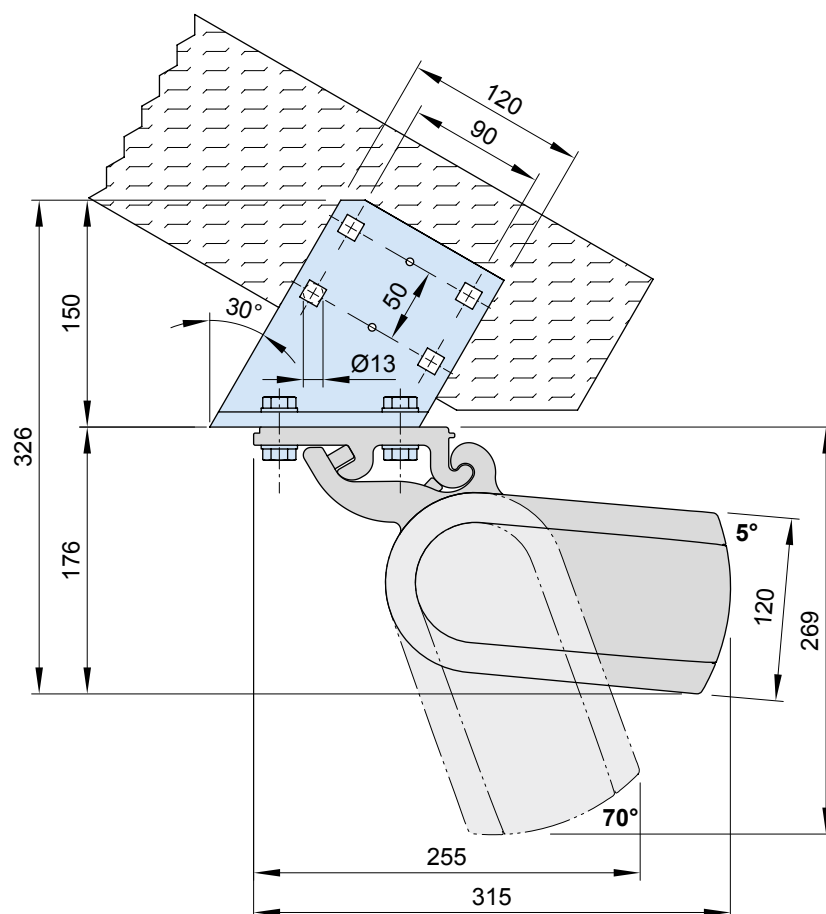
flat plate and angled
bracket for eaves fixture

height of flat plate:
500 mm

machine finish

716620

With eaves fixture bracket, top flat plate 150 mm (75889.)



N.B! At a pitch of more than 46° to the horizontal there must be an area accessible behind the awning at least 60 cm deep to allow manual operation.

dimensions in mm

01

Eaves fixture

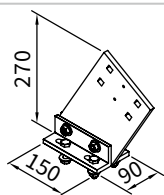
Fixtures, fittings and accessories

02

03

04

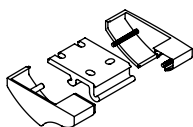
05



eaves fixture bracket

height of flat plate:
270 mm

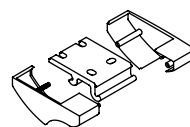
71659.

top fixture bracket
cover cap

left

100 mm

75887.

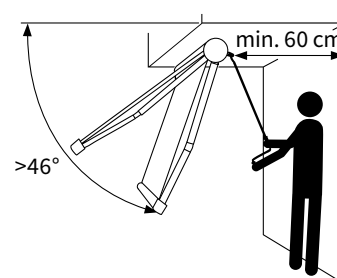
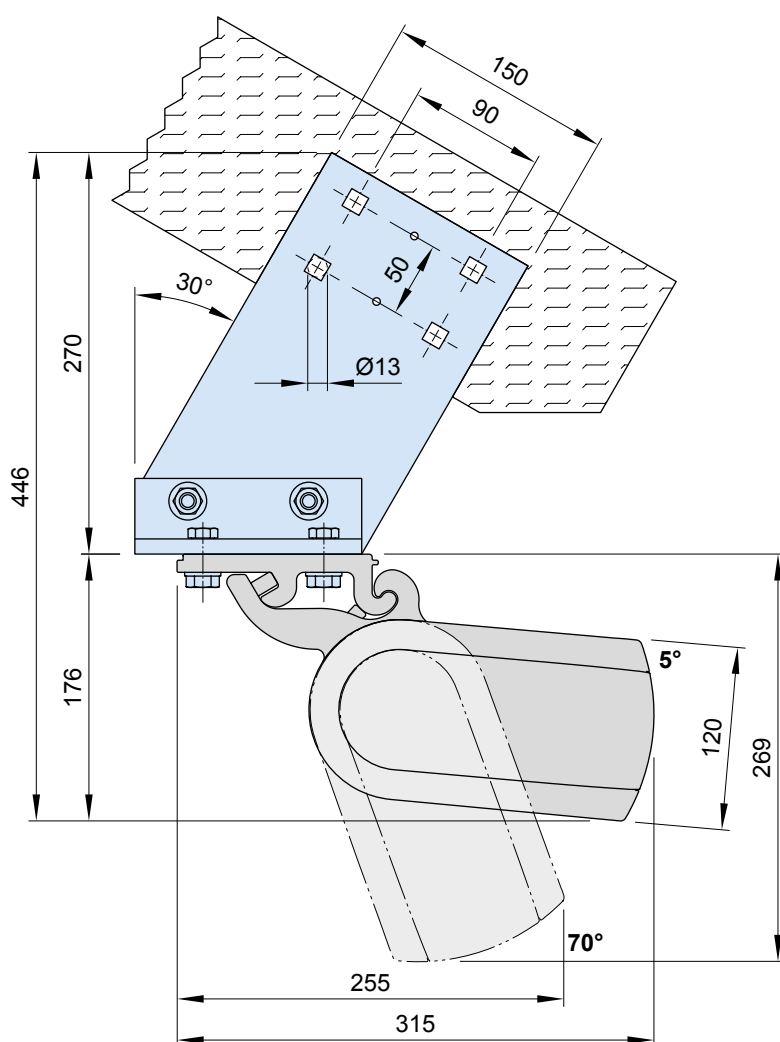
top fixture bracket
cover cap

right

100 mm

75888.

With eaves fixture bracket, top flat plate 270 mm (71659.)

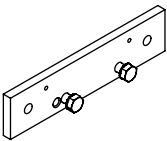


N.B! At a pitch of more than 46° to the horizontal there must be an area accessible behind the awning at least 60 cm deep to allow manual operation.

dimensions in mm

Eaves fixture with additional plate

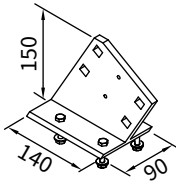
Fixtures, fittings and accessories



supplementary flat plate
for eaves fixture

260 × 60 × 12 mm

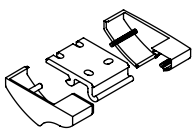
75383.



eaves fixture bracket

height of flat plate:
150 mm

75889.

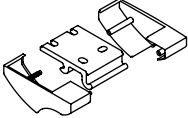


top fixture bracket
cover cap

left

100 mm

75887.



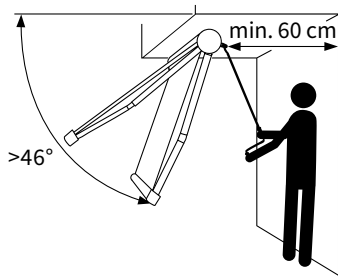
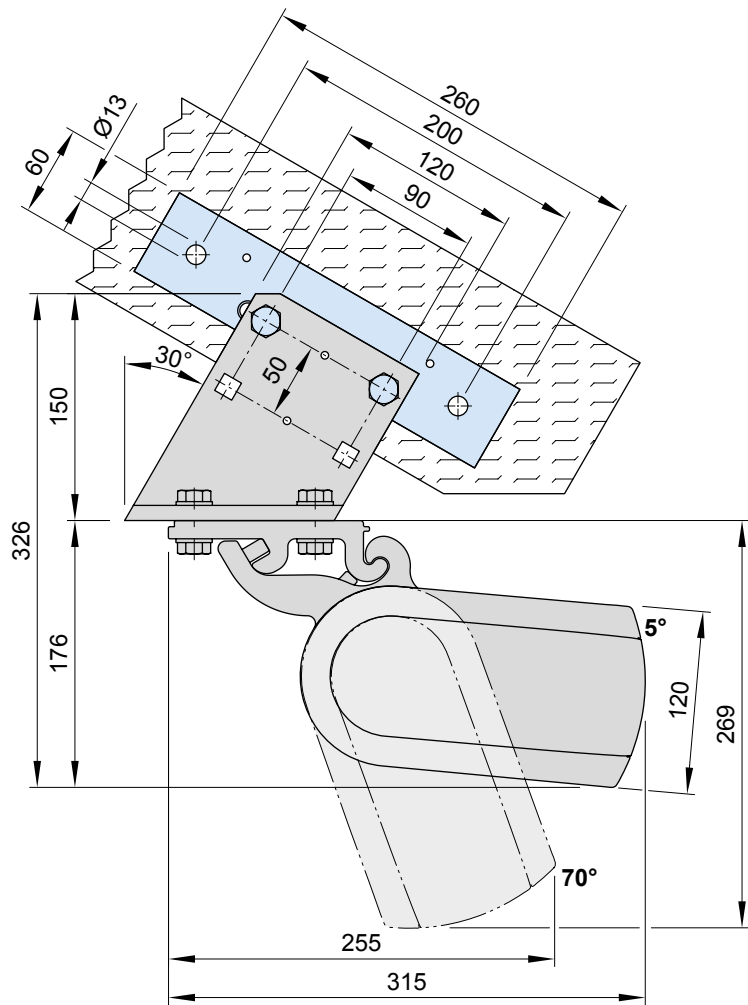
top fixture bracket
cover cap

right

100 mm

75888.

With eaves fixture bracket, top flat plate 150 mm (75889.)



N.B! At a pitch of more than 46° to the horizontal there must be an area accessible behind the awning at least 60 cm deep to allow manual operation.

dimensions in mm

01

Eaves fixture with additional plate

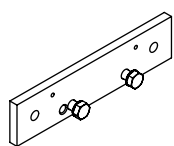
Fixtures, fittings and accessories

02

03

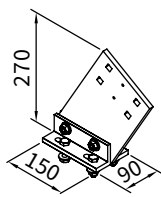
04

05



supplementary flat plate
for eaves fixture
260 × 60 × 12 mm

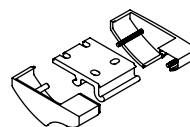
75383.



eaves fixture bracket

height of flat plate:
270 mm

71659.

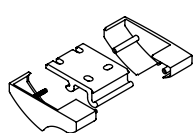


top fixture bracket
cover cap

left

100 mm

75887.



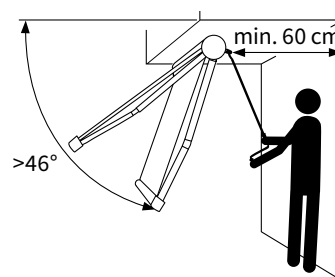
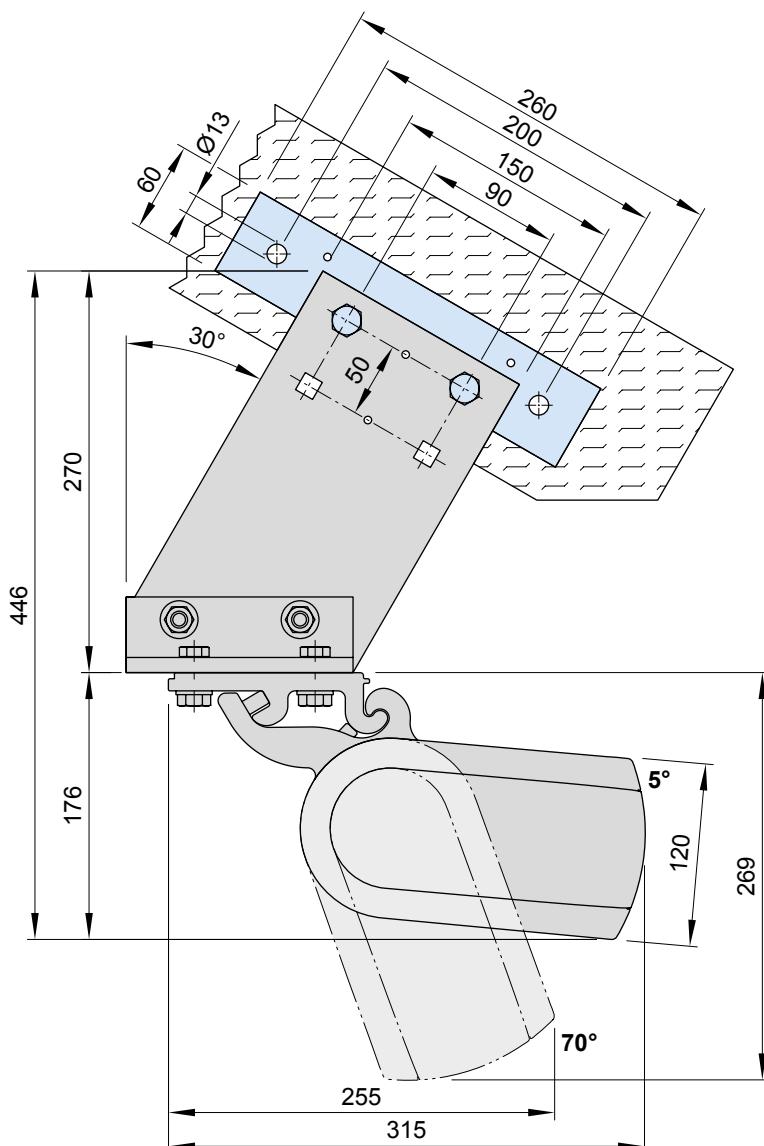
top fixture bracket
cover cap

right

100 mm

75888.

With eaves fixture bracket, top flat plate 270 mm (71659.)



N.B! At a pitch of more than 46° to the horizontal there must be an area accessible behind the awning at least 60 cm deep to allow manual operation.

dimensions in mm

Face fixture, manual operation ¹⁾

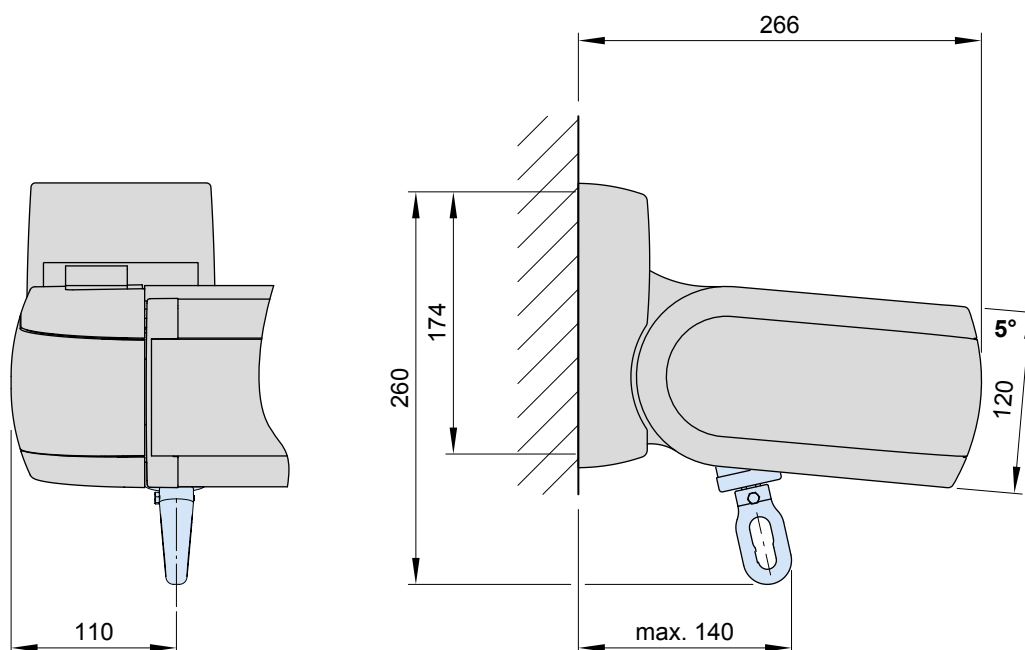
01

02

03

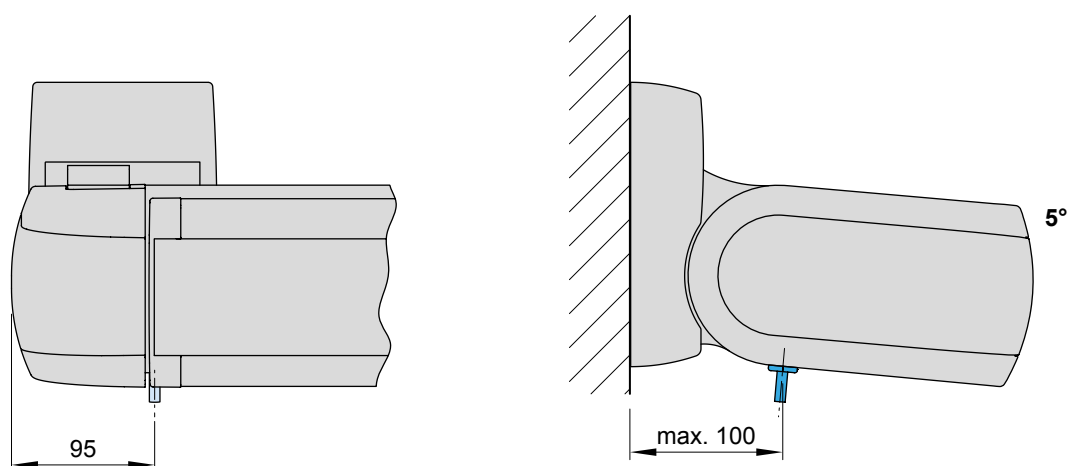
04

05

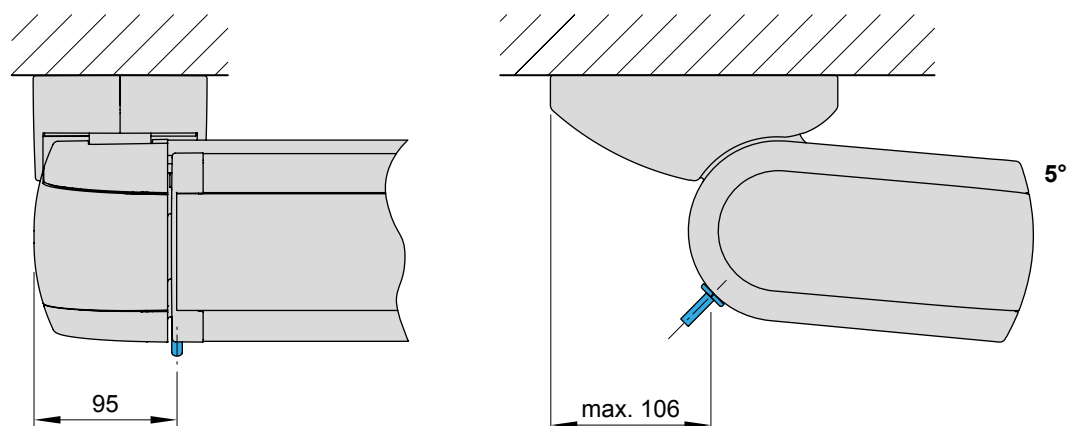


Motor / lighting cable exit point ^{1) 2)}

Face fixture



Top fixture



1) depending on the operation side, left or right

2) depending on the accessories ordered, one or two power supply cables (awning motor | lighting)

dimensions in mm

■ **01**

02

03

04

05