



Awning System

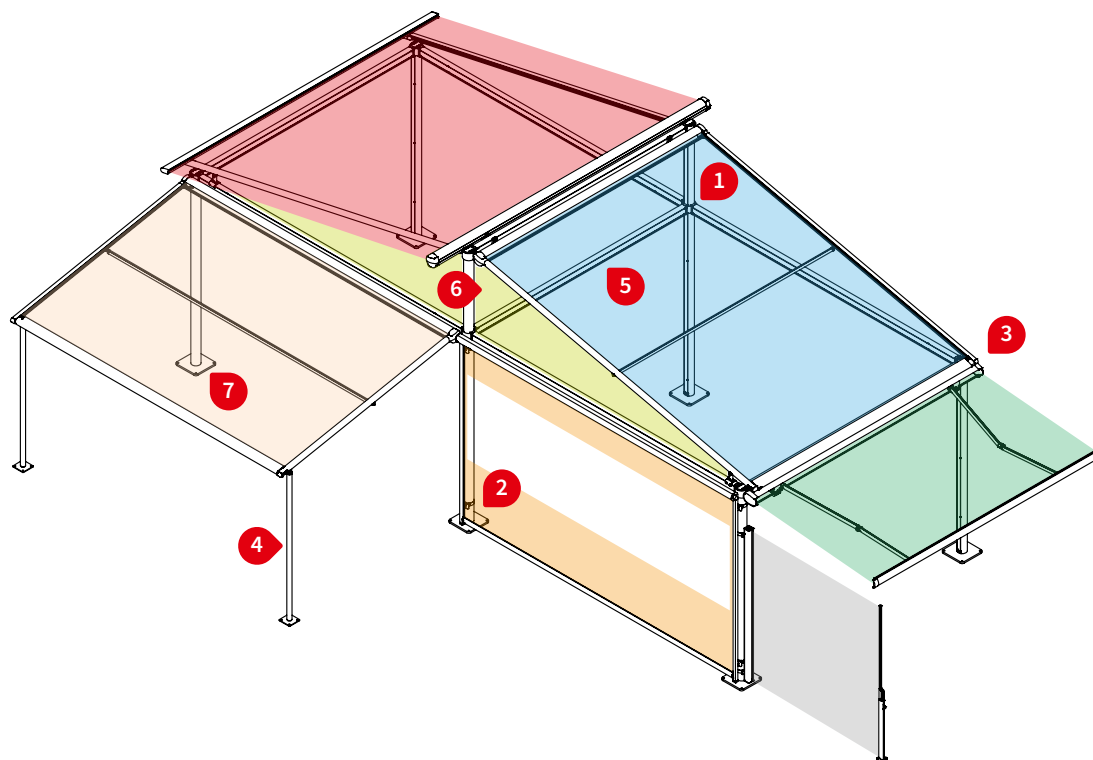
markilux construct

More free space, opening up boundless possibilities.

Product characteristics

Wind resistance class 3

Beaufort 6 → 38–48 km/h → 10.5–13.4 m/s → 24–30 mph



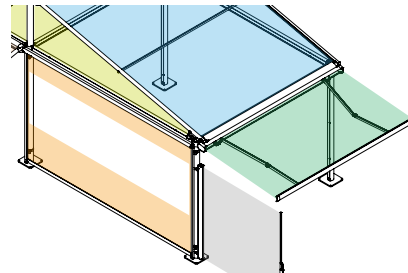
1 modular system: the cross beams can be positioned at will



2 ingenious bracket system for installing various blinds ¹⁾



3 combination example of the markilux 8800 / 876 / 5010



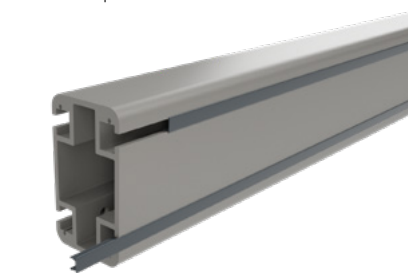
4 cabling is run through maintenance ducts



5 available with either round or square posts



6 continuous bracket slots, with plastic fillet ¹⁾



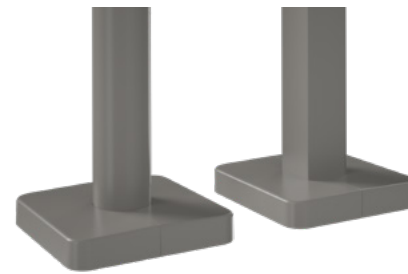
7 gable end with triangular acrylic glass window ¹⁾ or awning fabric ¹⁾



cover profile for where the awning is mounted ¹⁾



7 covers ¹⁾ for the post footplates



1) optional configuration

Product characteristics

Description

- free-standing, modular frame system made of aluminium offering almost unlimited possibilities for sun and weather protection over large areas.

Special features

- a modular and flexible system, which can be combined with almost all markilux shading systems
- support posts optionally with round or square shaped profiles, incl. screw-on footplates
- the construction with well thought-out connecting elements is based on the a modular design principle
- the cross-beam clamp rings can be positioned at any height on the slim posts
- in addition to the square and rectangular design areas, differing post heights can offer 3-dimensional design possibilities as well
- free-standing assembly or fixture to one side wall is possible
- powder coating in seven markilux standard frame colours or in a non-standard colour
- for configuration options, colours and dimensions please consult the chapter of the corresponding awning model in the sales manual

Dimensions

- maximum field width 700 cm
- support post height: standard height 318 mm, maximum height 450 cm
- support posts available in intermediate heights

Awning profiles

- extruded aluminium, in façade quality, powder coated
- support posts round Ø 140 mm or square 125 × 125 mm
- post base plate square 400 × 400 mm, galvanised steel
- rectangular cross beam, height 140 mm × width 80 mm

Optional accessories

- markilux infrared heater
- markilux spotlight LED
- attractive footplate covers, made of die-cast aluminium, powder-coated
- cover profile for gap-free awning installation to the frame system
- a wide range of brackets for the installation of folding arm awnings, vertical and side blinds, conservatory and pergola awnings as well as heating and lighting accessories
- triangular acrylic glass sections or fabric covers to close the gable ends
- cover profile (traffic white RAL 9016 or anthracite grey similar to RAL 7016) for the bracket slots in the cross-beam

markilux planning service

in the case of larger construction projects, markilux can offer comprehensive planning support on request. Based on dimension data and photographs of the area to be designed, the following services can be carried out on request:

- a realistic photographic representation of the shading system in colour, optionally also as a 3D visualisation
- suggestions for special solutions
- Preparation of technical drawings as a solution to suggestions – can also be used for building permit submissions
- further consultation services until the order is issued

a realistic photographic collage and a detailed technical presentation increase the quality of on-site consultation and the chances of success!

Planning permission

N.B! Please observe that shade systems may be subject to compulsory planning permission regulations depending on the region!

01
02
03
04
05
06

Frame colours

markilux frame colours without surcharge

traffic white RAL 9016



metallic aluminium RAL 9006



grey brown, similar to RAL 8019



off-white textured finish, 5233 ¹⁾



stone grey metallic, 5215 ¹⁾



anthracite metallic, 5204 ¹⁾



Havana brown textured finish, 5229 ¹⁾



Non-standard powder-coated finish

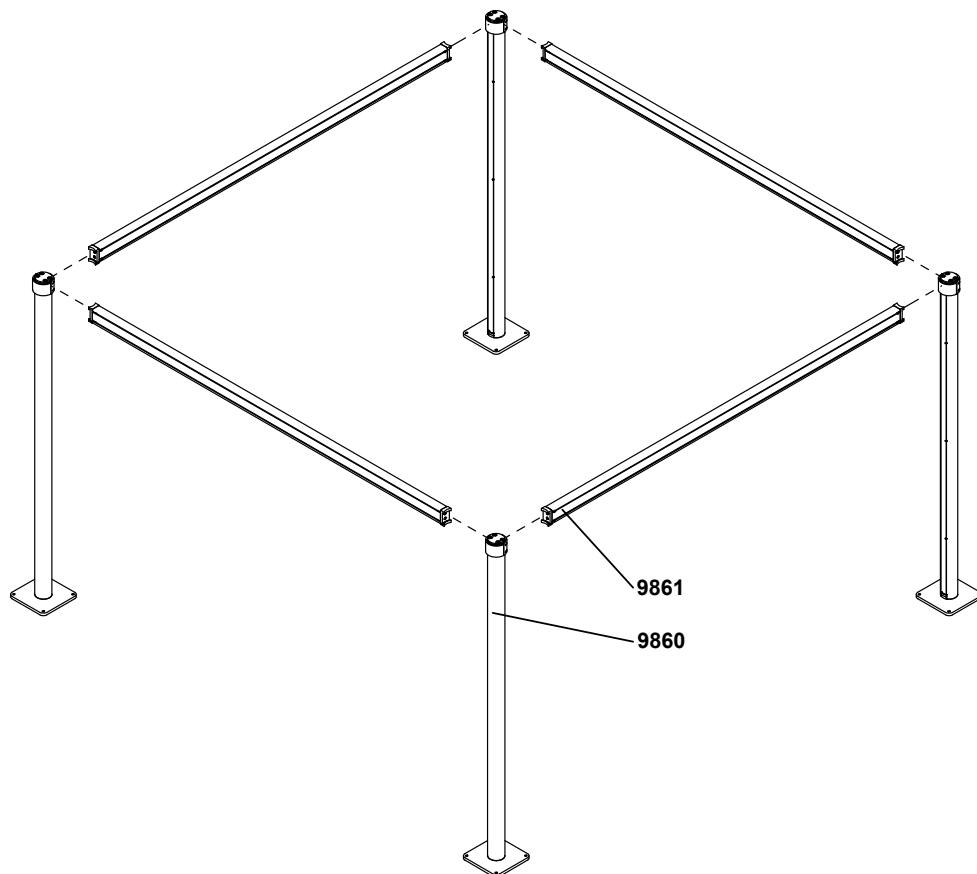
Bespoke frame colours at a surcharge – matt, metallic and pearl finishes as well as other colour ranges (DB, Tiger etc.) on request. All frame colours are available at a surcharge with enhanced corrosion protection.

¹⁾ textured finish

Colours may differ slightly from those depicted in both hue and finish.

Overview

1 field, showing a round post



01

02

03

04

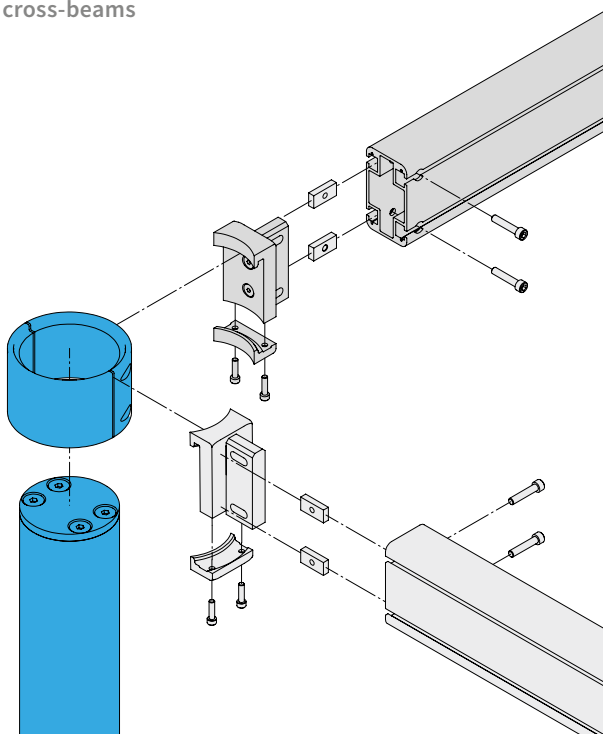
05

06

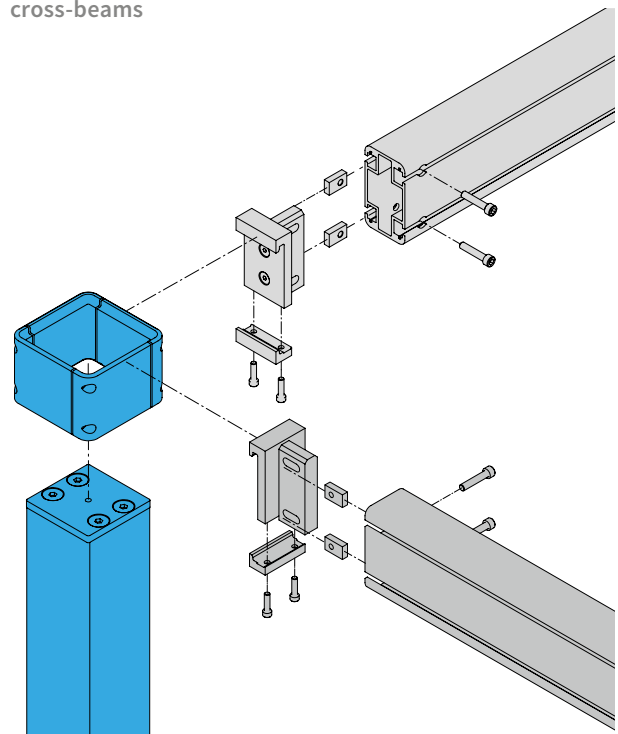
07

Overview

Round post, corner convergence point with two cross-beams



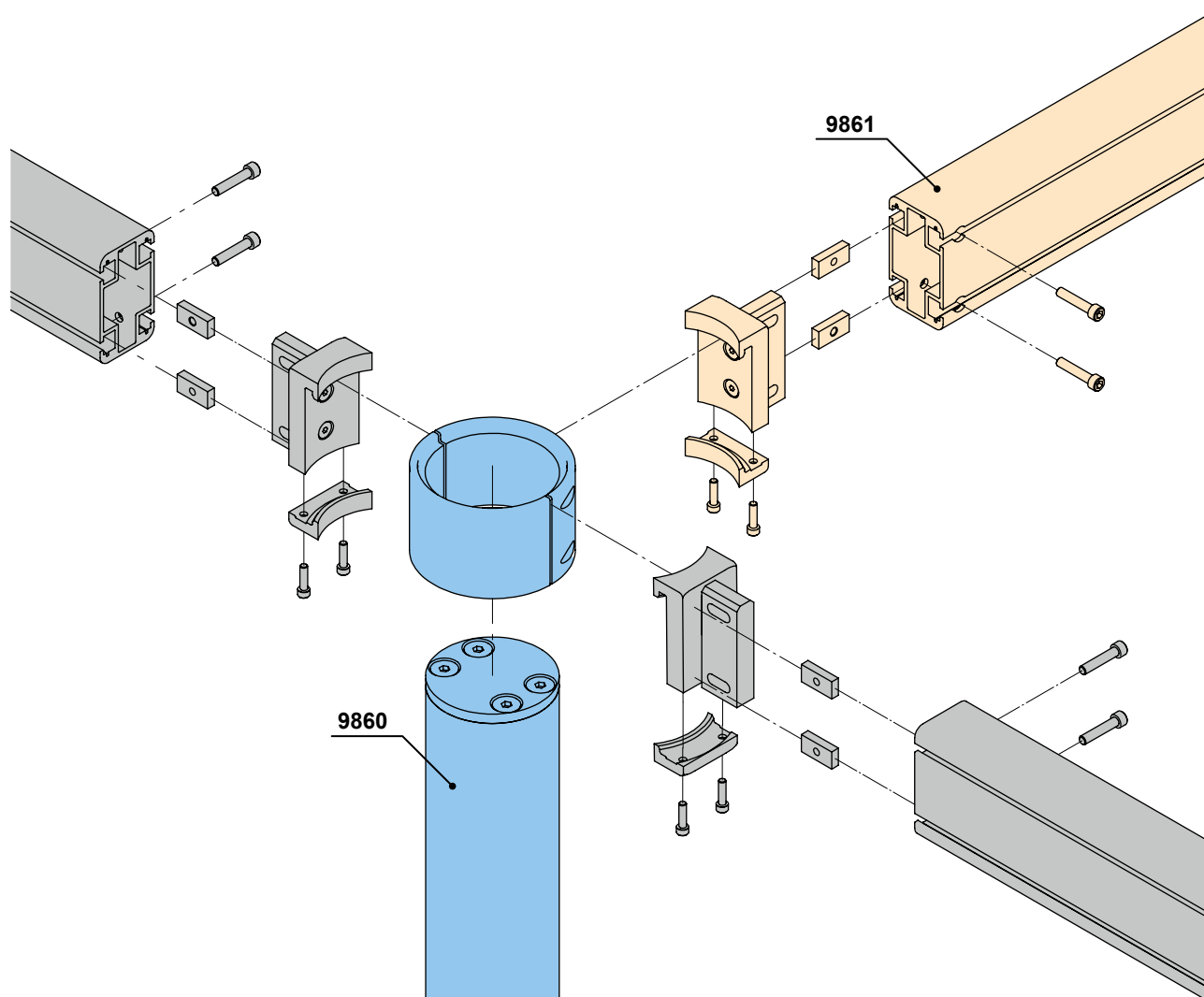
Square post, corner convergence point with two cross-beams



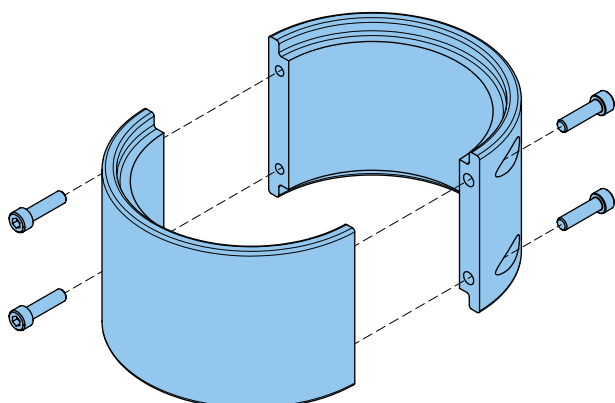
Overview

Round post, corner convergence point with three cross-beams

07

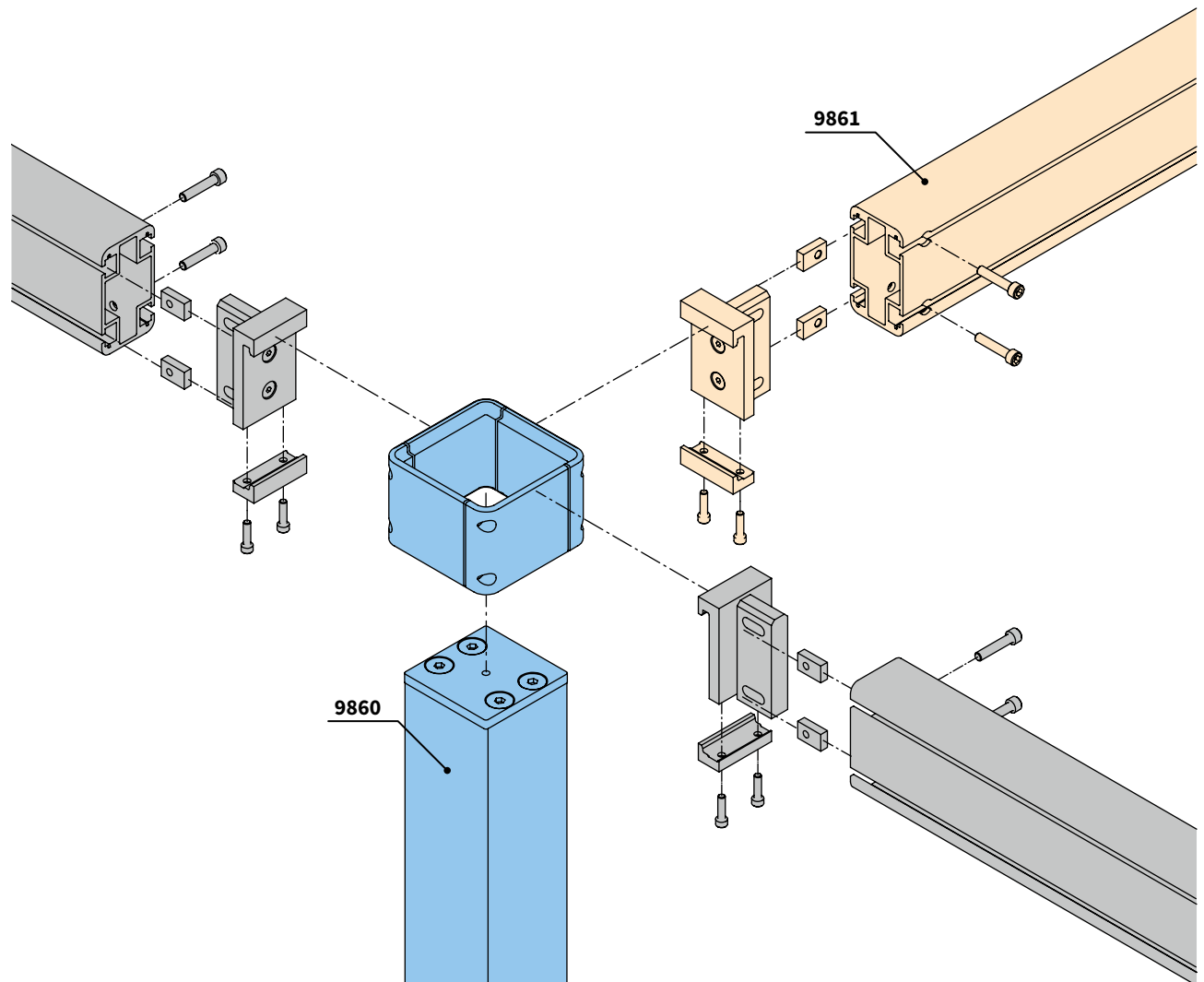


Clamp ring for round post (76820.)

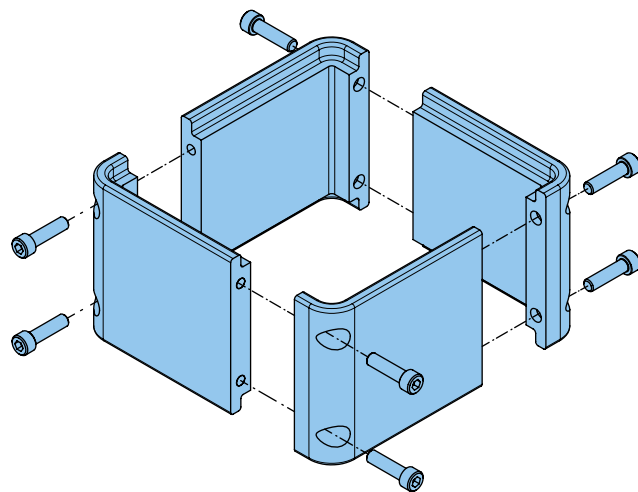


Overview

Square post, corner convergence point with three cross-beams



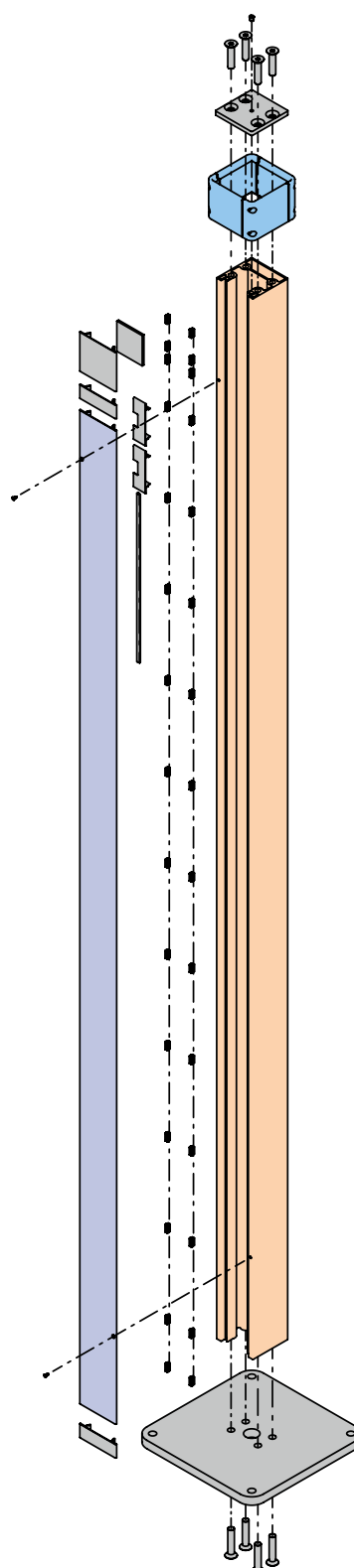
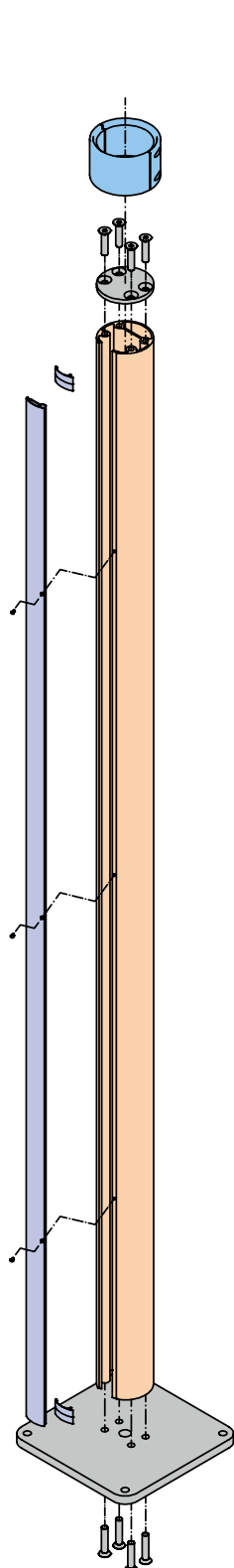
Clamp ring for square post (72301.)



Overview

Round post with footplate and clamp ring (9860)

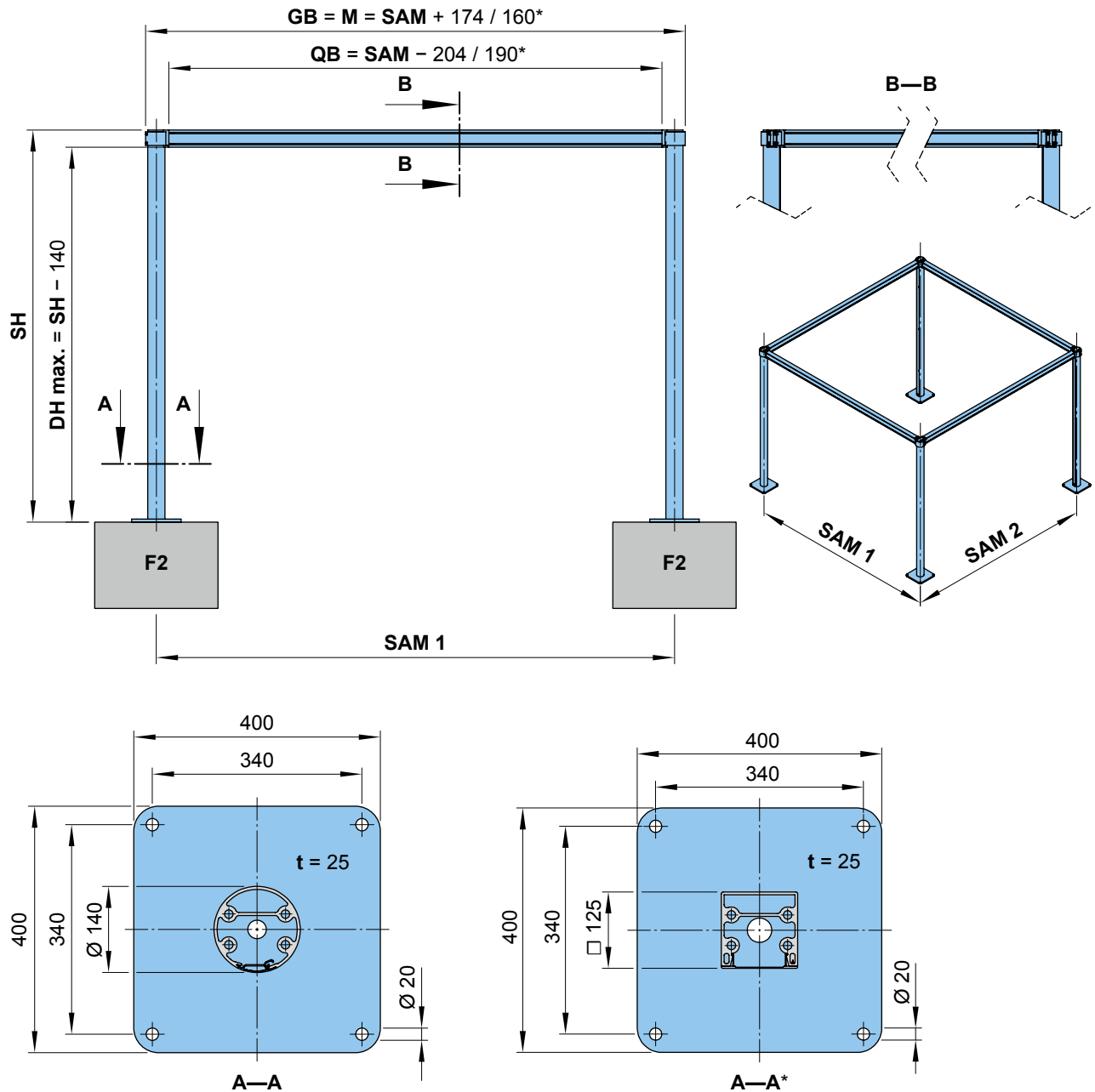
Square post with footplate and clamp ring (9860)



Post height: standard 3180 mm, max. 4500 mm

Overview of fixture dimensions

1 field, free-standing



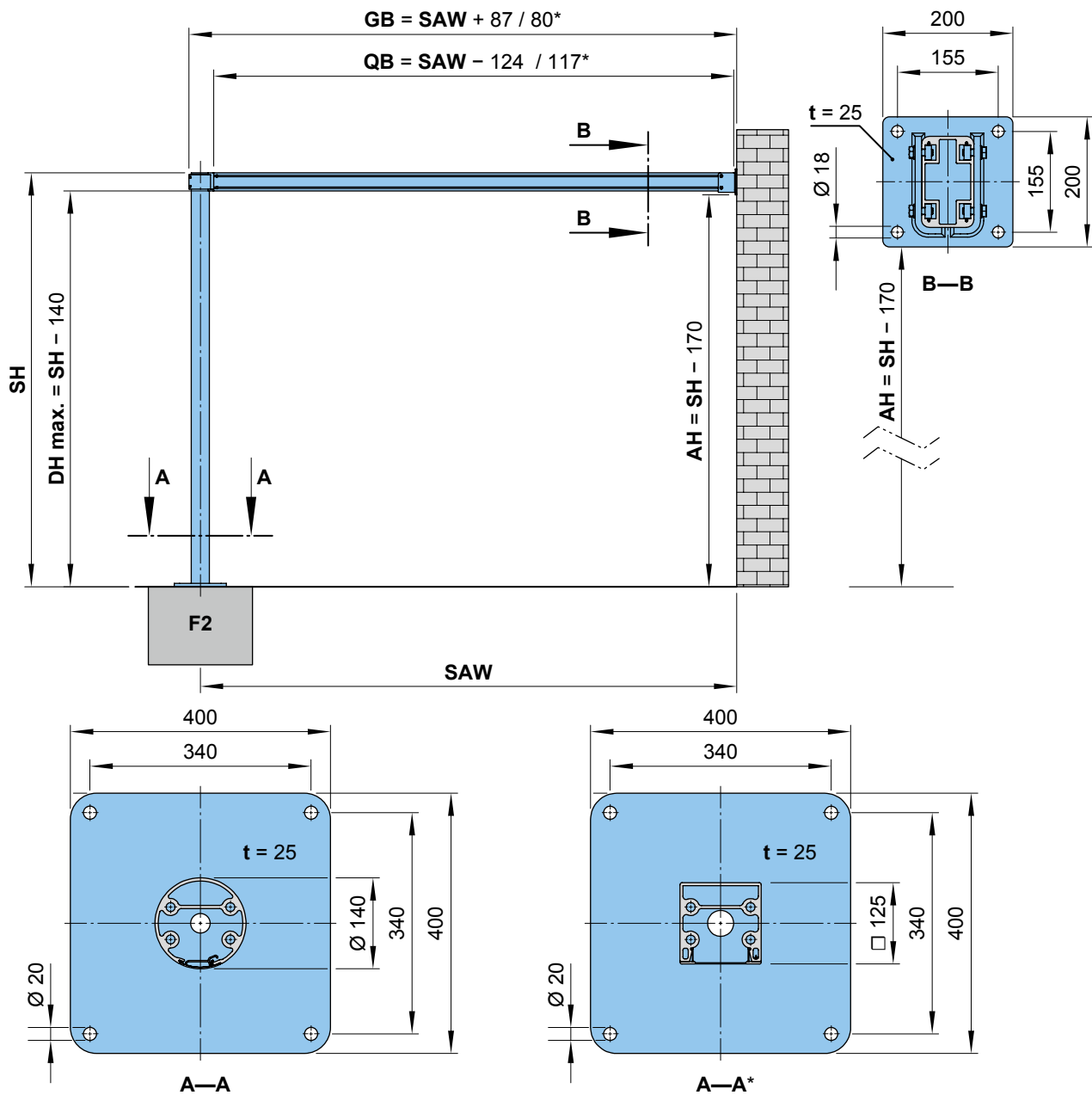
* = information referring to square posts
 DH = headroom
 F2 = concrete foundation
 GB = total width = $M = SAM + 174 / 160^*$ mm
 M = overall awning width

QB = length of cross beam
 (max. length = 7000 mm) = $SAM - 204 / 190^*$ mm
 SAM = *order dimensions* = post separation, centre to centre
 SH = *order dimensions* = post height (standard: 3180 mm / max.: 4500 mm)
 t = material thickness

dimensions in mm

Overview of fixture dimensions

Wall sealing profile



AH = fixture height = $SH - 170$ mm

DH = headroom

F2 = concrete foundation

GB = total width = $SAW + 87 / 80^*$ mm

QB = length of cross-beam

(max. length = 7000 mm) = $SAW - 124 / 117^*$ mm

SAW = *order dimension* = distance post centre $\triangleleft \triangleright$ mounting surface

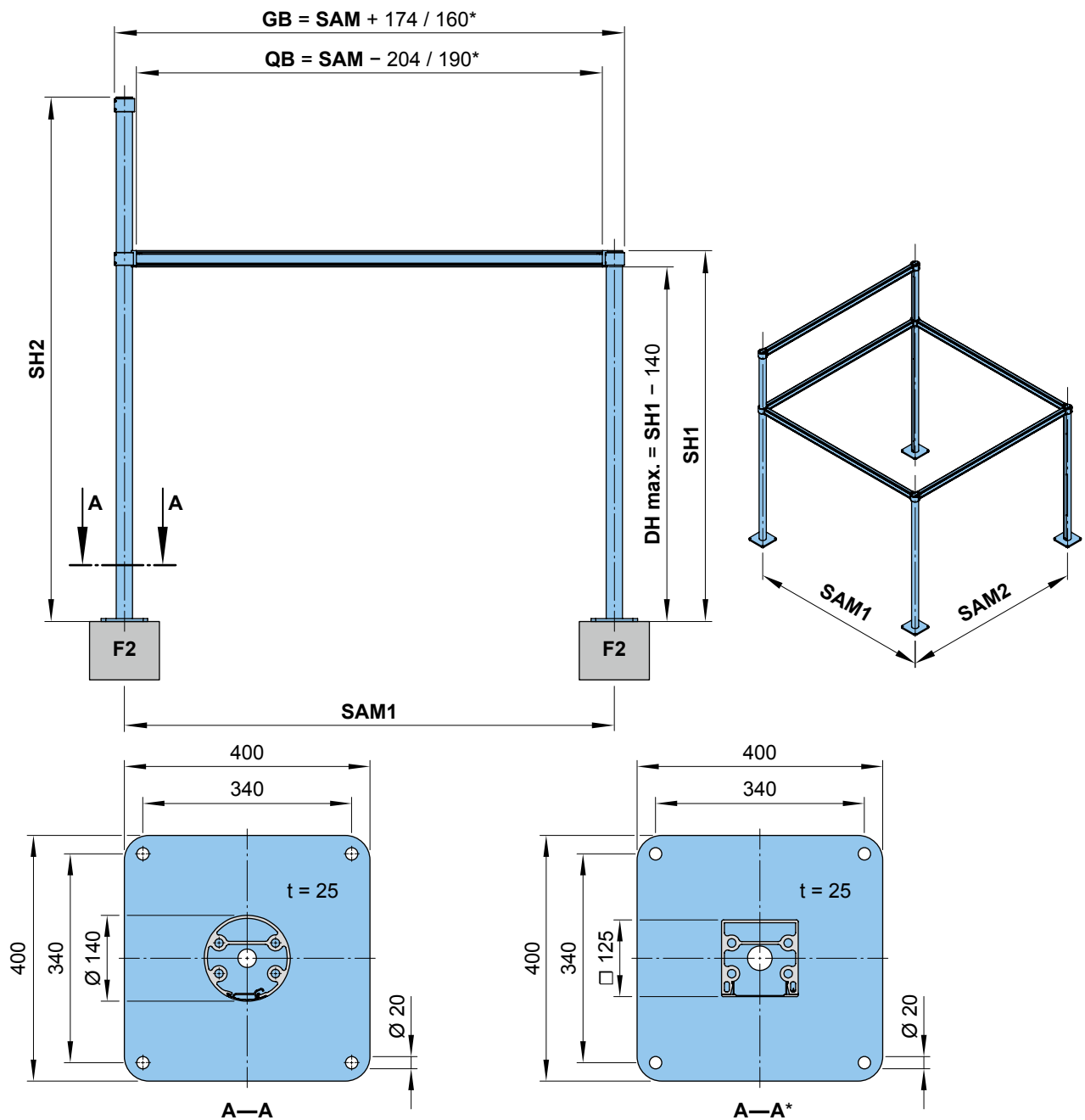
SH = *order dimension* = post height (standard: 3180 mm / max.: 4500 mm)

t = material thickness

dimensions in mm

Overview of fixture dimensions

Different post heights



* = information referring to square posts

DH = headroom

F2 = concrete foundation

GB = total width = M = SAM + 174 / 160* mm

QB = length of cross beam

(max. length = 7000 mm) = SAM - 204 / 190* mm

SAM = *order dimensions* = post separation centre to centre

SH = *order dimension* = post height (standard: 3180 mm / max.: 4500 mm)

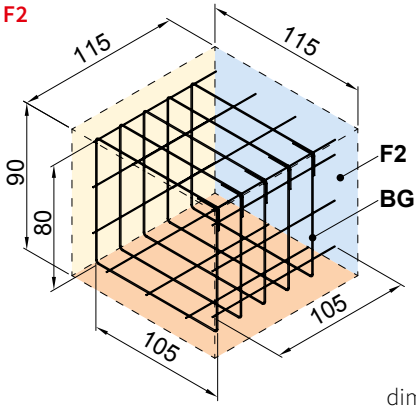
t = material thickness

dimensions in mm

01 Concrete foundations

To be supplied on site:

02 Concrete foundations owith a compressive strength complying with C25/30 (previously B25)
03 with ra reinforcement cage made of rebar matting Q188.



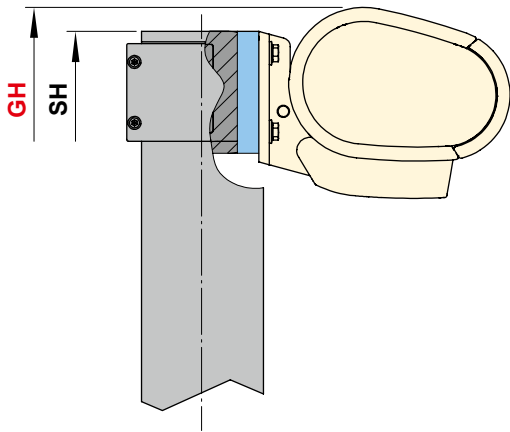
Fixture to concrete foundation F2

using Fischer marine-grade stainless steel anchor bolts FAZ II 16/50 and washers certified to DIN 9021 (or equivalent)

Alternatively fixture can be realised using the Krinner ground screws. Adapter sets for installation to these are available.

Dimensions overview

Overall height (GH) with different awning models



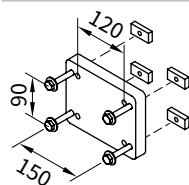
GH = overall height
SH = *order dimension* = support post height
(standard: 3180 mm / max.: 4500 mm)
W = awning pitch

Awning	GH (W=15°)
markilux 6000	SH + 25
markilux 5010	SH + 0
markilux 3300	SH + 43
markilux 990	SH + 27
markilux MX-3	SH
markilux 1710	SH + 53
markilux 1710 stretch	SH + 53
markilux 1600	SH + 59
markilux1600 stretch	SH + 59
markilux 1650	SH + 59
markilux 930	SH + 27
markilux 1300	SH + 61
markilux 1700	SH + 53
markilux 1700 stretch	SH + 53
markilux 8800	SH + 40
markilux pergola	SH + 40

dimensions in mm

Fixtures, fittings and accessories

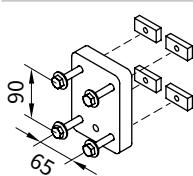
Fixture and accessories for folding-arm awnings



fixture options
for markilux 6000,
markilux 5010 to the
markilux construct

180 × 140 × 25 mm

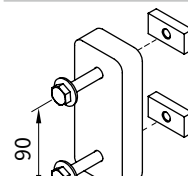
76913.



fixture options
for markilux 1600, 1700,
1710, markilux 3300 to the
markilux construct

100 × 140 × 25 mm

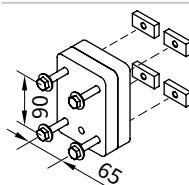
76914.



fixture options
for markilux 1600, 1700,
1710, markilux 3300 to the
markilux construct

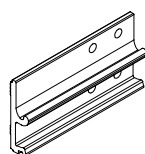
60 × 140 × 25 mm

76915.



fixture options
for markilux MX-3, marki-
lux 990, markilux 930 to
the markilux construct

76916.



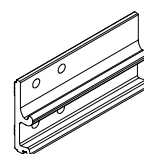
face fixture bracket

300 mm, right

for fixture of the
markilux MX-3 to the
markilux construct

75878.

left side



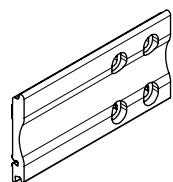
face fixture bracket

300 mm, left

for fixture of the
markilux MX-3 to the
markilux construct

75877.

right side

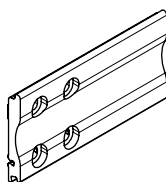


face fixture bracket

300 mm, right

for fixture of the
markilux 990,
markilux 930
to the markilux construct

70600.



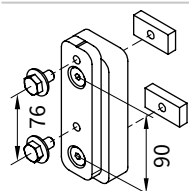
face fixture bracket

300 mm, left

for fixture of the
markilux 990,
markilux 930
to the markilux construct

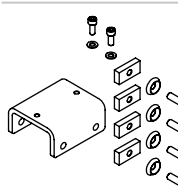
70617.

Fixture and accessories for the markilux 8800 or markilux pergola



fixture options
for markilux pergola,
markilux 8800
to the markilux construct

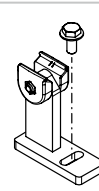
76917.



cross-beam adapter with
fixing material

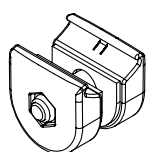
for track bracket markilux
8800 to the markilux
construct

73441.



track bracket for post
with fixture options

73446.

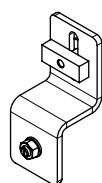


bracket for triangular
acrylic glass

at the top

on request

79571.

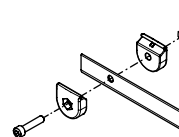


fixture bracket for
bottom channel rail

triangular cover

on request

72914.

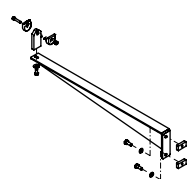


channel rail at top
with bracket

triangular cover

on request

72911.



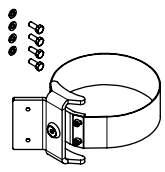
via stand-off brackets

on request

73996.

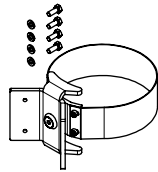
Fixtures, fittings and accessories

Fixture and accessories for vertical blinds or side screens – round posts



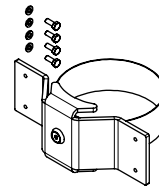
post fixture guide track
corner, one side
round post

79558.



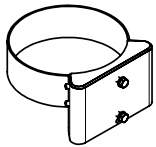
post fixture guide track
corner, both sides
round post

79556.



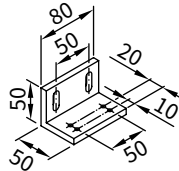
post fixture guide track
centre, both sides
round post

79557.



post fixture guide track
single and double bracket
round post

72206.

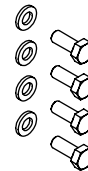


additional angled bracket,
bearing / gearbox / motor
side for 72206.

50 × 50 × 80 mm

(accessories 787211 for
two brackets required)

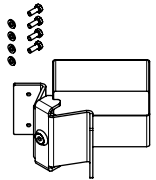
78719.



accessories for two
angled brackets 78719.

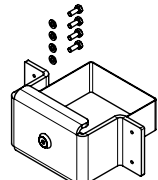
787211

Fixture and accessories for vertical blinds or side screens – square posts



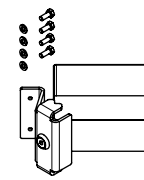
post fixture guide track
corner, both sides
square post

72233.



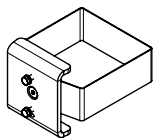
post fixture guide track
centre, both sides
square post

72234.



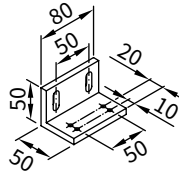
post fixture guide track
corner, one side
square post

72235.



post fixture guide track
single and double bracket
square post

72232.



additional angled bracket,
bearing / gearbox / motor
side for 72232.

50 × 50 × 80 mm

(accessories 787211 for
two brackets required)

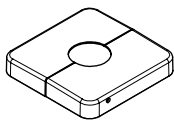
78719.



accessories for two
angled brackets 78719.

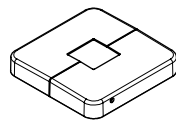
787211

Optional accessories



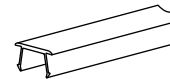
cover base plate
for round post

72263.



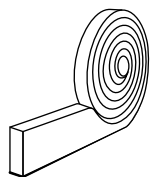
footplate cover
for square posts

72261.



cover profile for cross-
beam

77768.

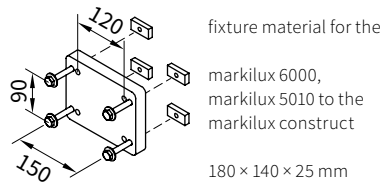


compression tape,
PU soft foam material
to eliminate gaps,
in rolls of 15 m, gap size
from 3 mm to 7 mm, with
a minimum resistance to
water ingress of 600
Pa, grey

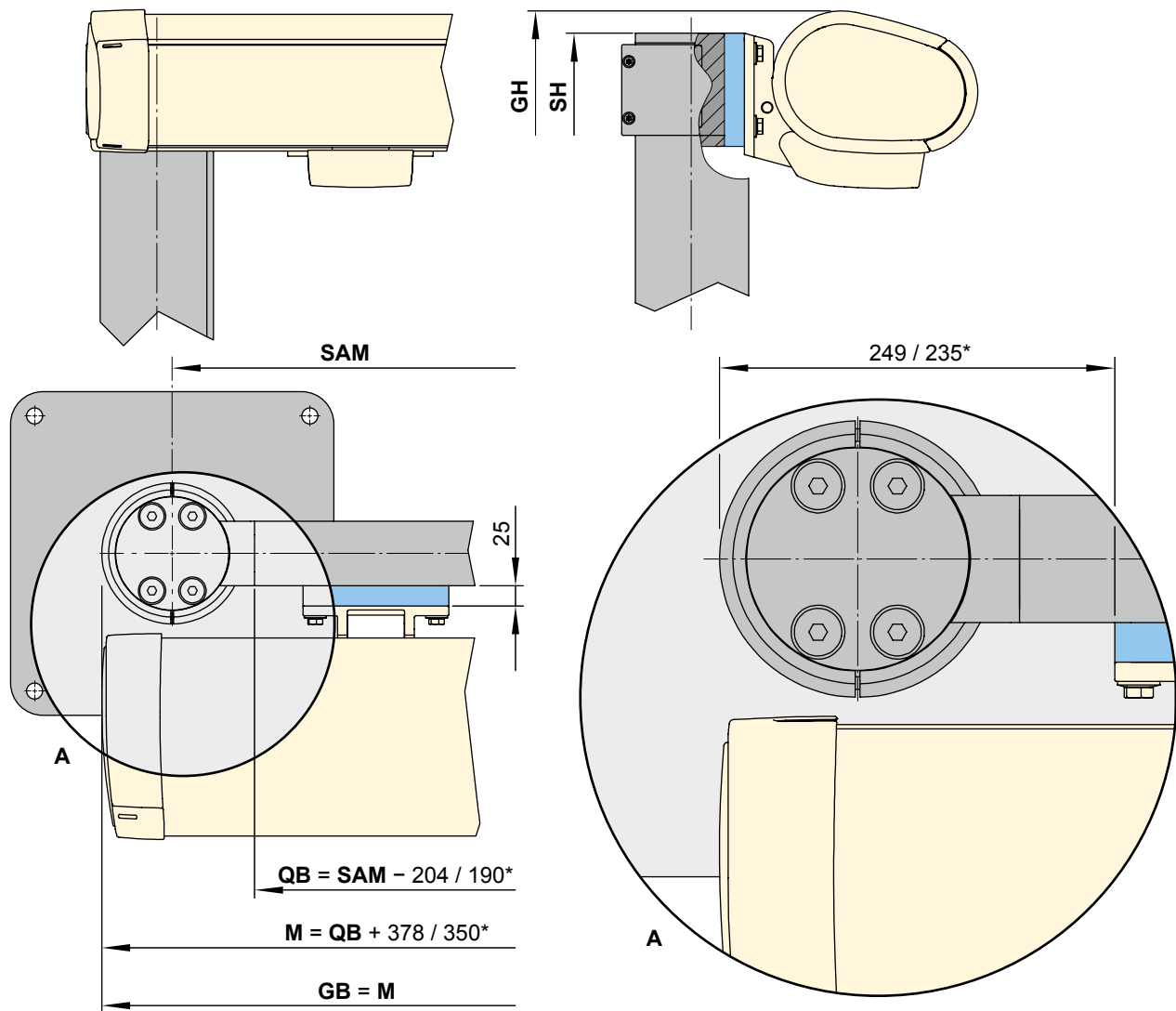
795721

Installation dimensions

markilux 6000 / markilux 5010



76913.



* = information referring to square posts

GB = total width = M

GH = total height: markilux 5010 = SH / markilux 6000
= SH + 25 mm (with the awning tilted at 15°)

M = awning width = QB + 378 / 350*

QB = cross-beam width (max. length = 7000 mm)
= SAM - 204 / 190* mm

SAM = *order dimensions* = post separation centre to centre

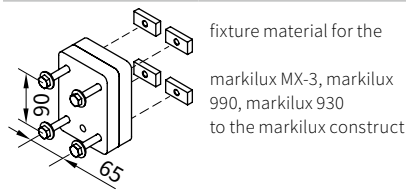
SH = *order dimension* = support post height

(standard: 3180 mm / max.: 4500 mm)

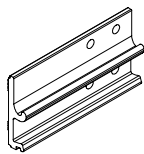
dimensions in mm

Installation dimensions

markilux MX-3



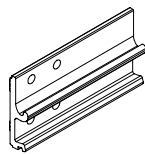
76916.



face fixture bracket
300 mm, right
for fixture of the
markilux MX-3 to the
markilux construct

75878.

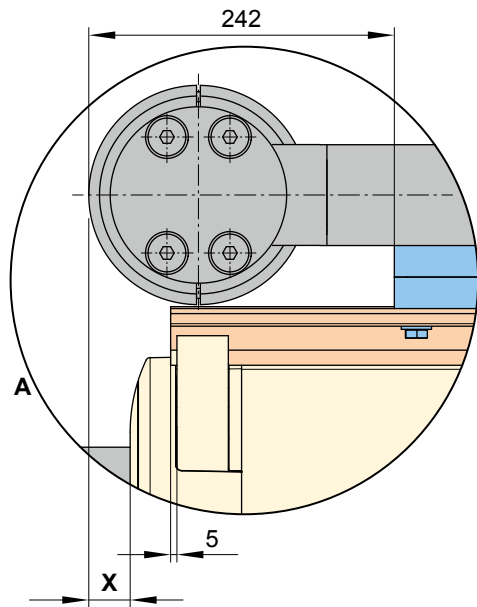
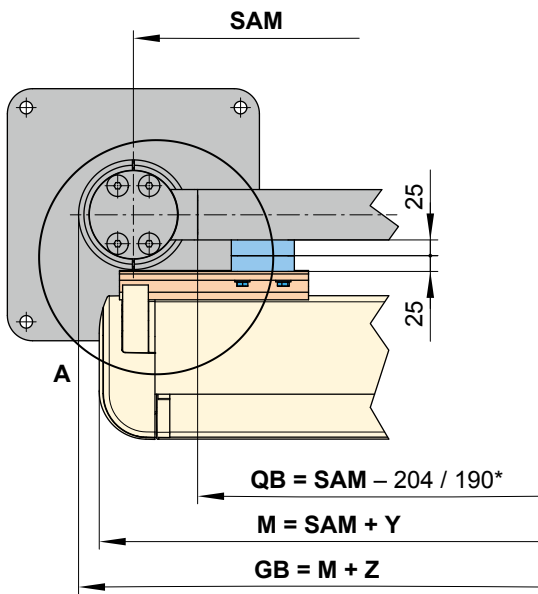
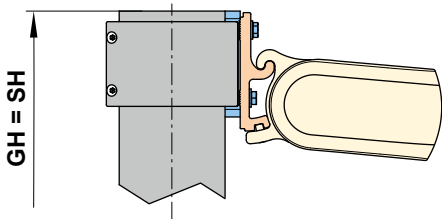
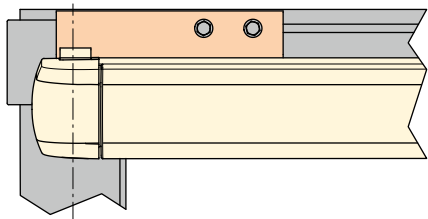
left side



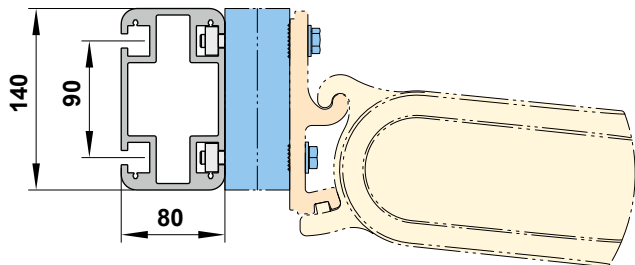
face fixture bracket
300 mm, left
for fixture of the
markilux MX-3 to the
markilux construct

75877.

right side



Dimension overview of cross-beam



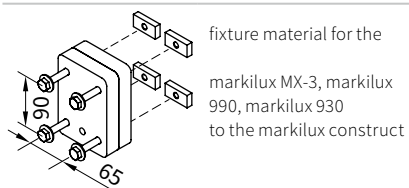
Awning	X	Y	Z
markilux MX-3	32	110/96 *	64

- * = information referring to square posts
- GB** = total width = M + Z
- GH** = total height = SH + 27
- M** = awning width = QB + 312 / 284*

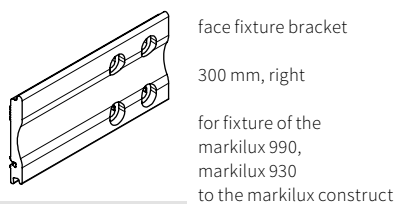
- QB** = cross-beam width (max. length = 7000 mm) = SAM - 204 / 190* mm
- SAM** = *order dimensions* = post separation centre to centre
- SH** = *order dimension* = support post height
(standard 3180 mm / max. 4500 mm)
- dimensions in mm

Installation dimensions

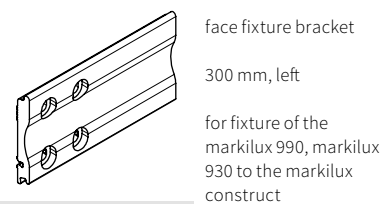
markilux 990 / markilux 930



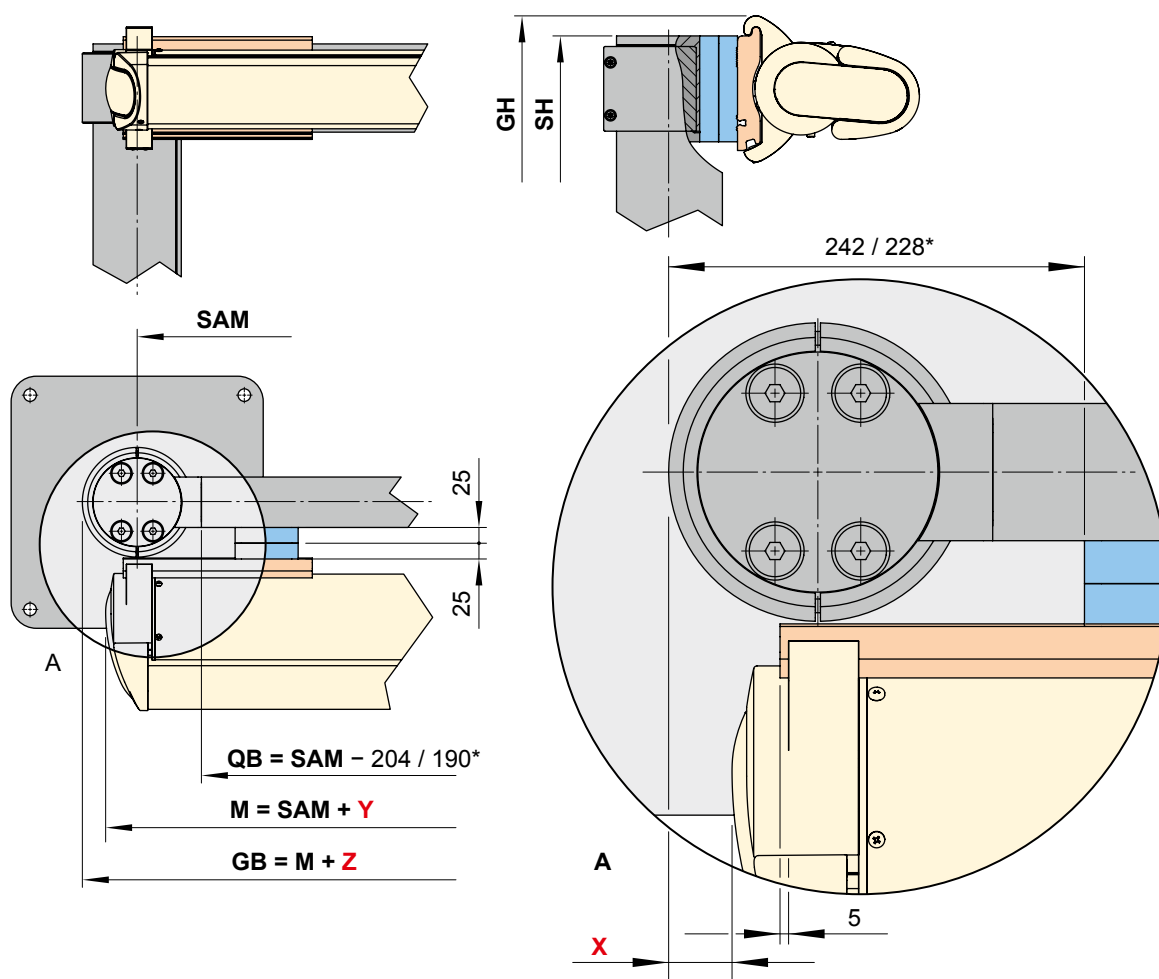
76916.



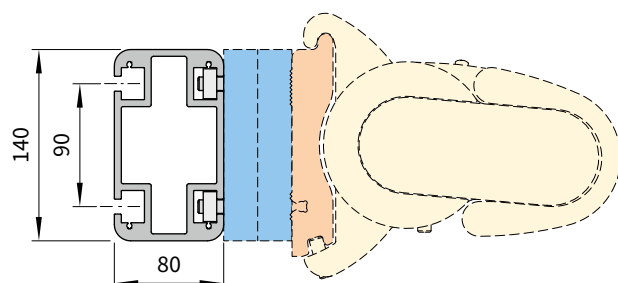
70600.



70617.



Dimension overview of cross-beam



Awning	X	Y	Z
markilux 930	47.5	79	95
markilux 990	37	100	74

* = information referring to square posts

GB = total width = M + Z

GH = total height = SH + 27

M = awning width = QB + 378 / 350*

QB = cross-beam width (max. length = 7000 mm) = SAM - 204 / 190* mm

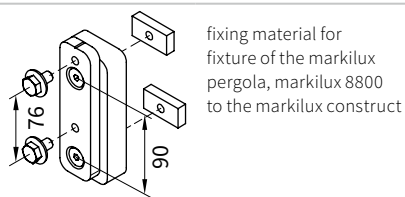
SAM = order dimensions = post separation centre to centre

SH = order dimension = support post height
(standard 3180 mm / max. 4500 mm)

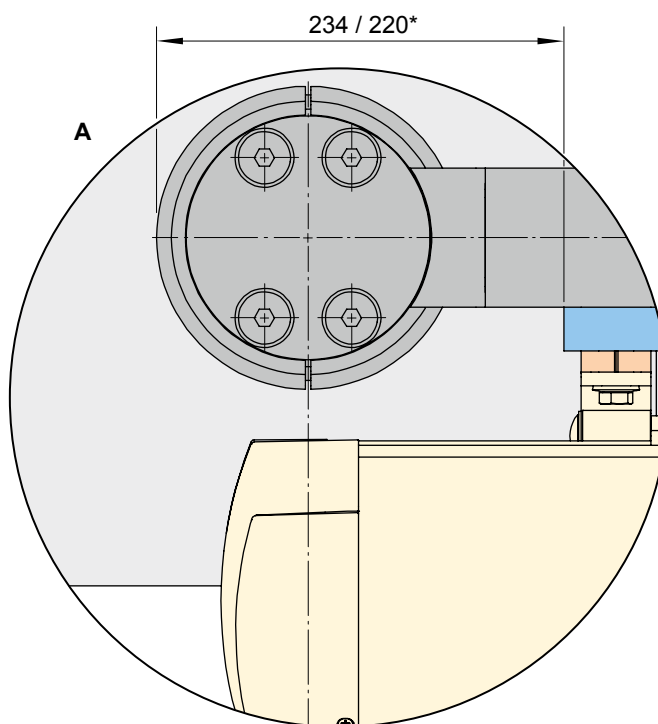
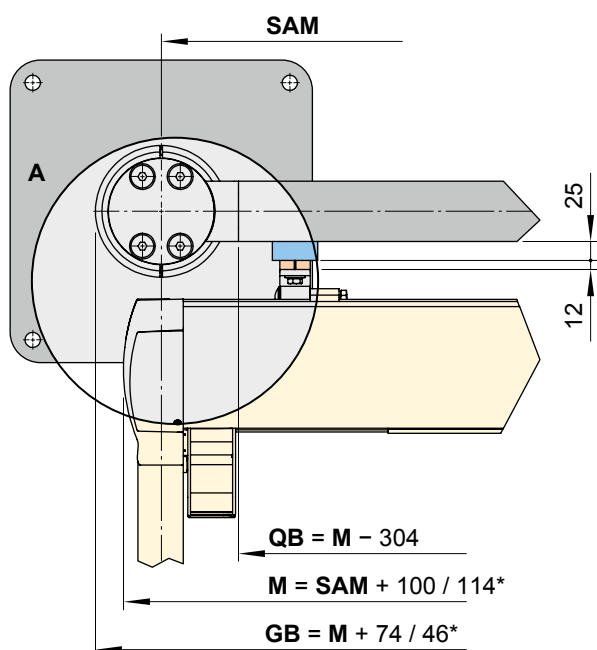
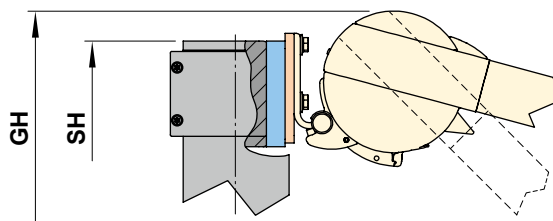
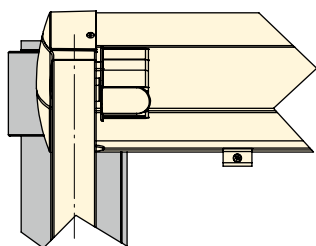
dimensions in mm

Installation dimensions

markilux pergola / markilux 8800



76917.



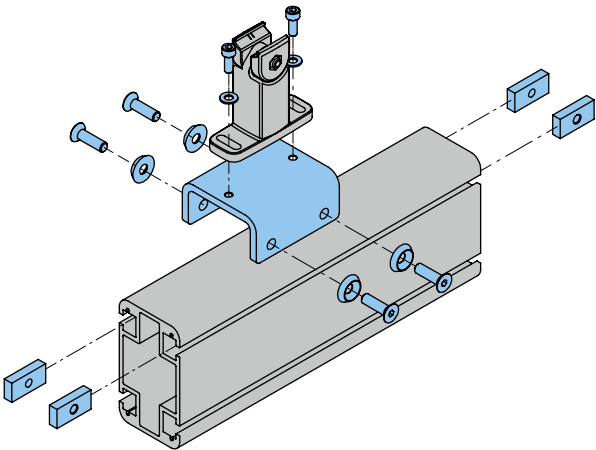
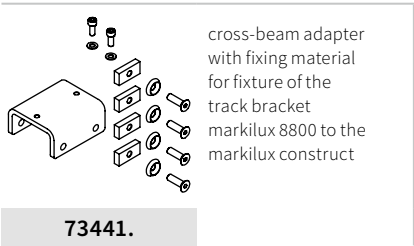
- * = information on angular posts
GB = total width = M + 74 / 46*
GH = total height = SH + 40
M = awning width = QB + 378 / 350*

- QB = crossbar width (max. length = 7000 mm) = SAM - 204 / 190* mm
SAM = *order dimensions* = post separation, centre to centre
SH = *order dimension* = support post height
(standard: 3180 mm / max.: 4500 mm)

dimensions in mm

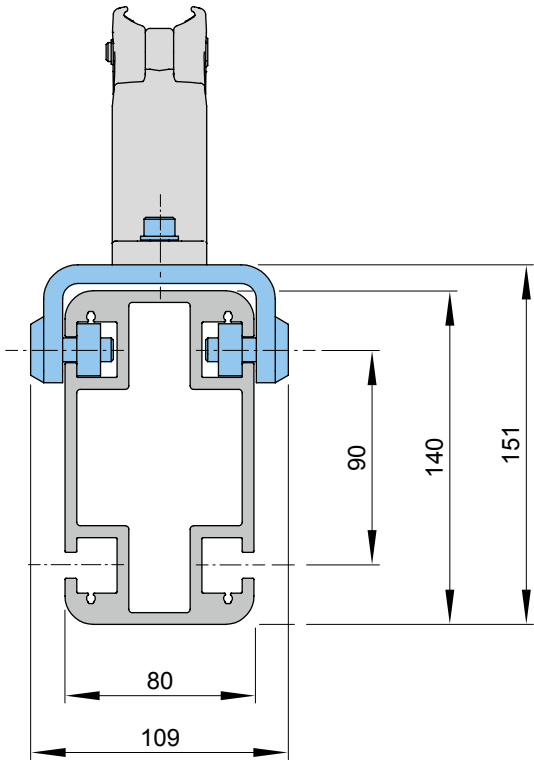
Overview of fixture dimensions

Cross-beam adapter for track bracket markilux 8800



Dimensions overview

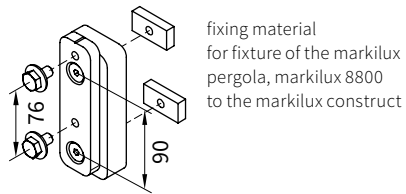
Cross-beam adapter for track bracket markilux 8800



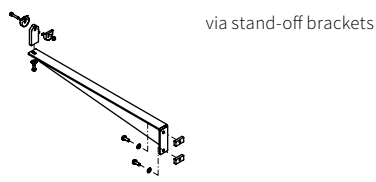
dimensions in mm

Overview

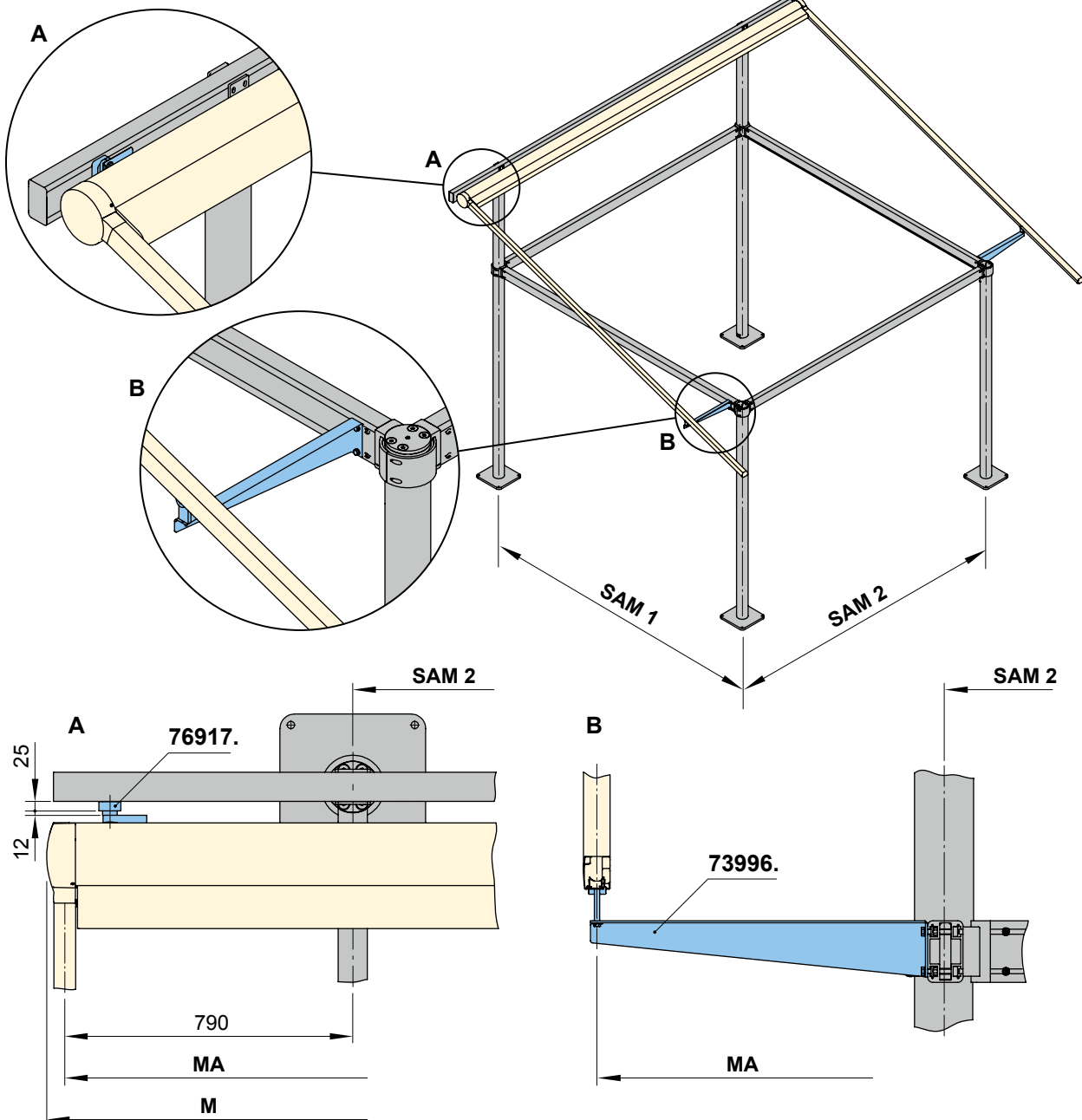
markilux 8800 overhanging to the side (on request)



76917.



73996.



M = overall awning width

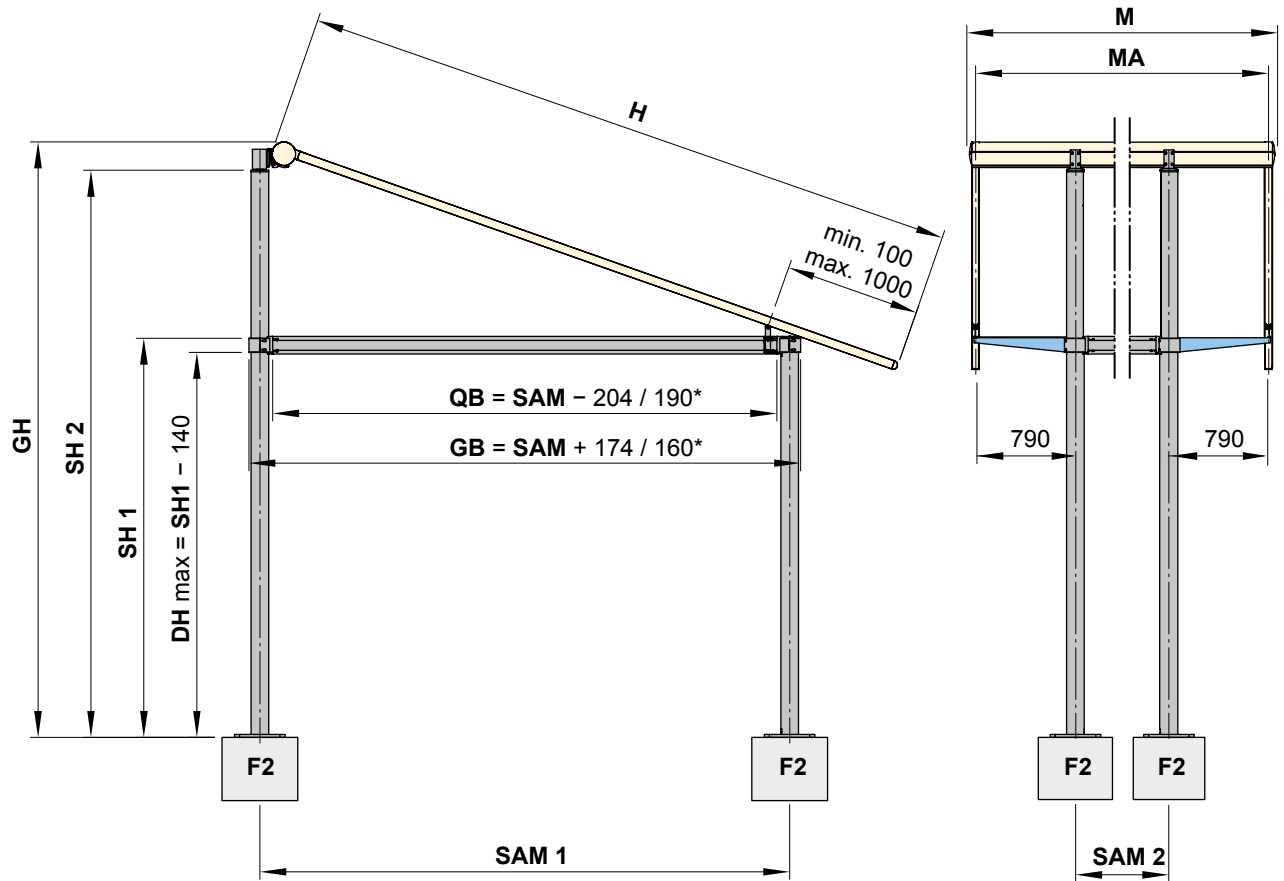
MA = awning fixture width = awning width between fixture points

SAM = *order dimensions* = post separation centre to centre

dimensions in mm

Dimensions overview

markilux 8800 overhanging to the side (on request)



* = information referring to square posts

BG = armoured cage made from rebar matting Q188

DH = headroom

F2 = concrete foundation

GB = overall width

GH = overall height

H = extension

max = maximum

M = overall awning width

MA = awning fixture width = awning width between fixture points

SAM = *order dimensions* = post separation, centre to centre of the outermost posts

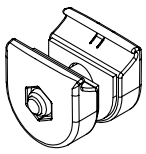
SH = *order dimension* = support post height (standard: 3180 mm / max.: 4500 mm)

QB = length of cross-beam

dimensions in mm

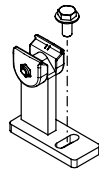
Overview

A folding-arm awning on one side with triangular acrylic glass window and cover profile – on request



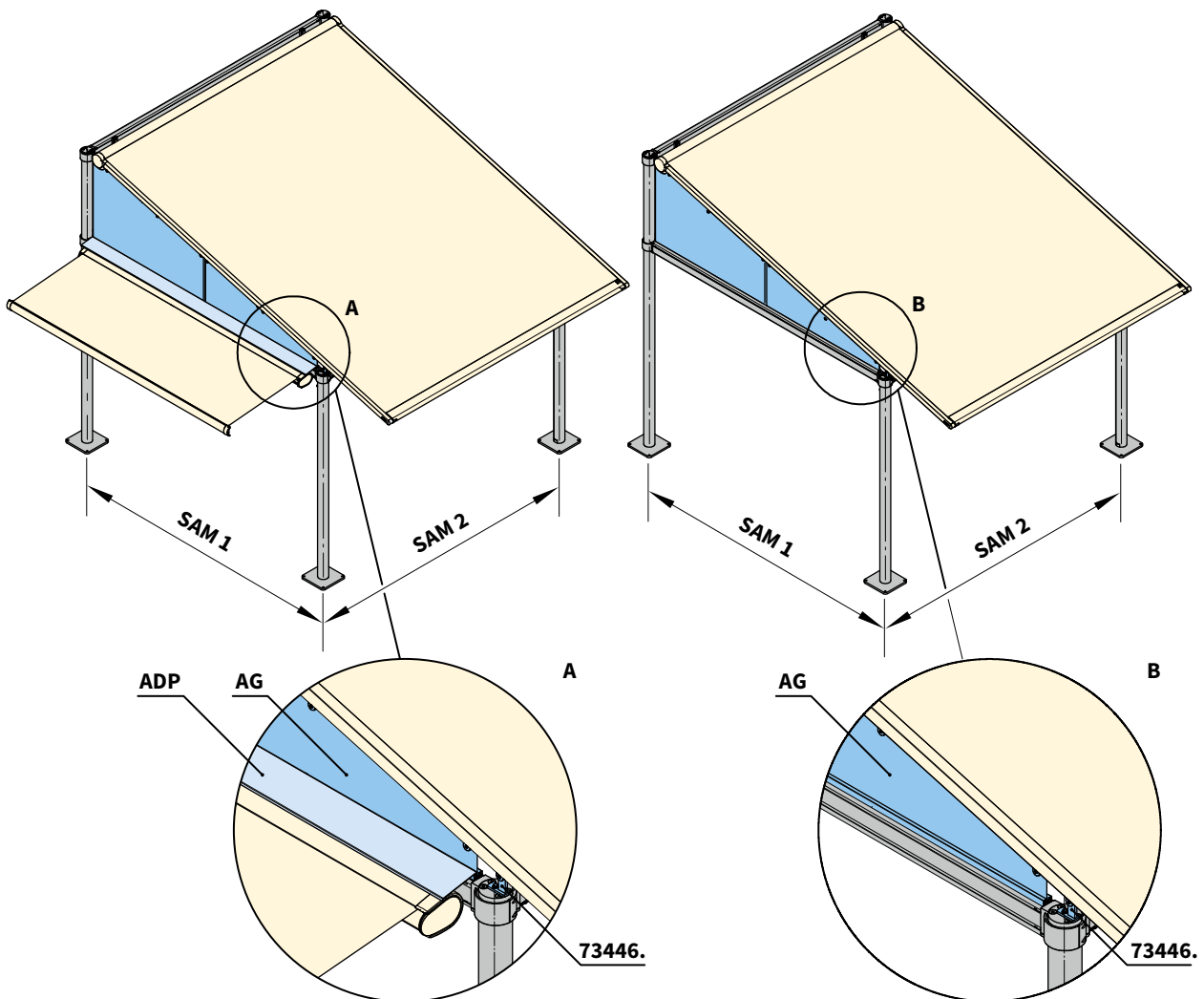
bracket for triangular
acrylic glass
at top
on request

79571.



track bracket for post
with fixture options

73446.



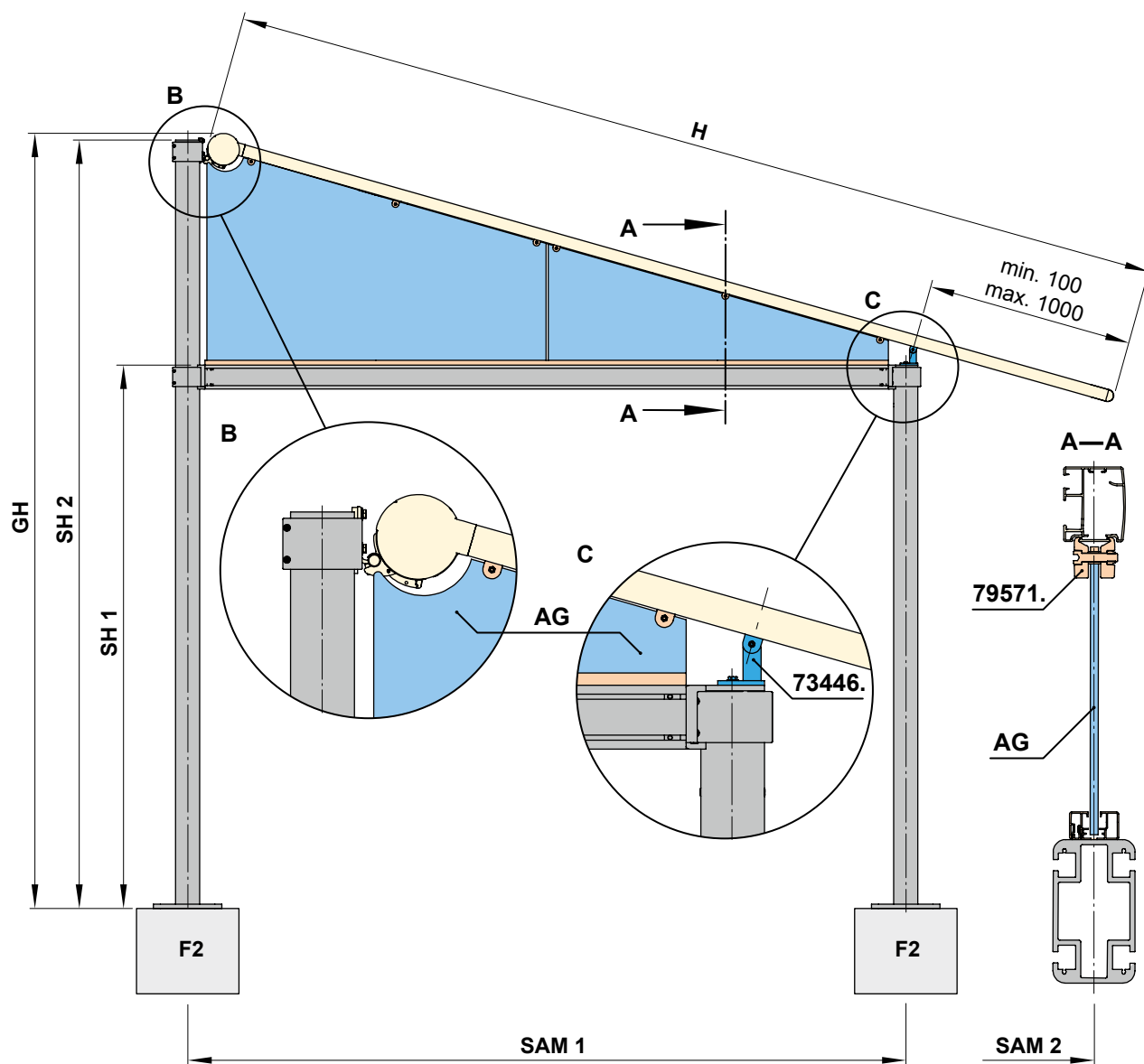
ADP = cover profile for folding-arm awnings

AG = acrylic glass

SAM = *order dimensions* = post separation centre to centre

Overview of fixture dimensions

Triangular acrylic glass window



AG = acrylic glass

BG = armoured cage made from rebar matting Q188

F2 = please view section "concrete foundation"

GH = overall height

H = extension

SAM = *order dimensions* = post separation, centre to centre

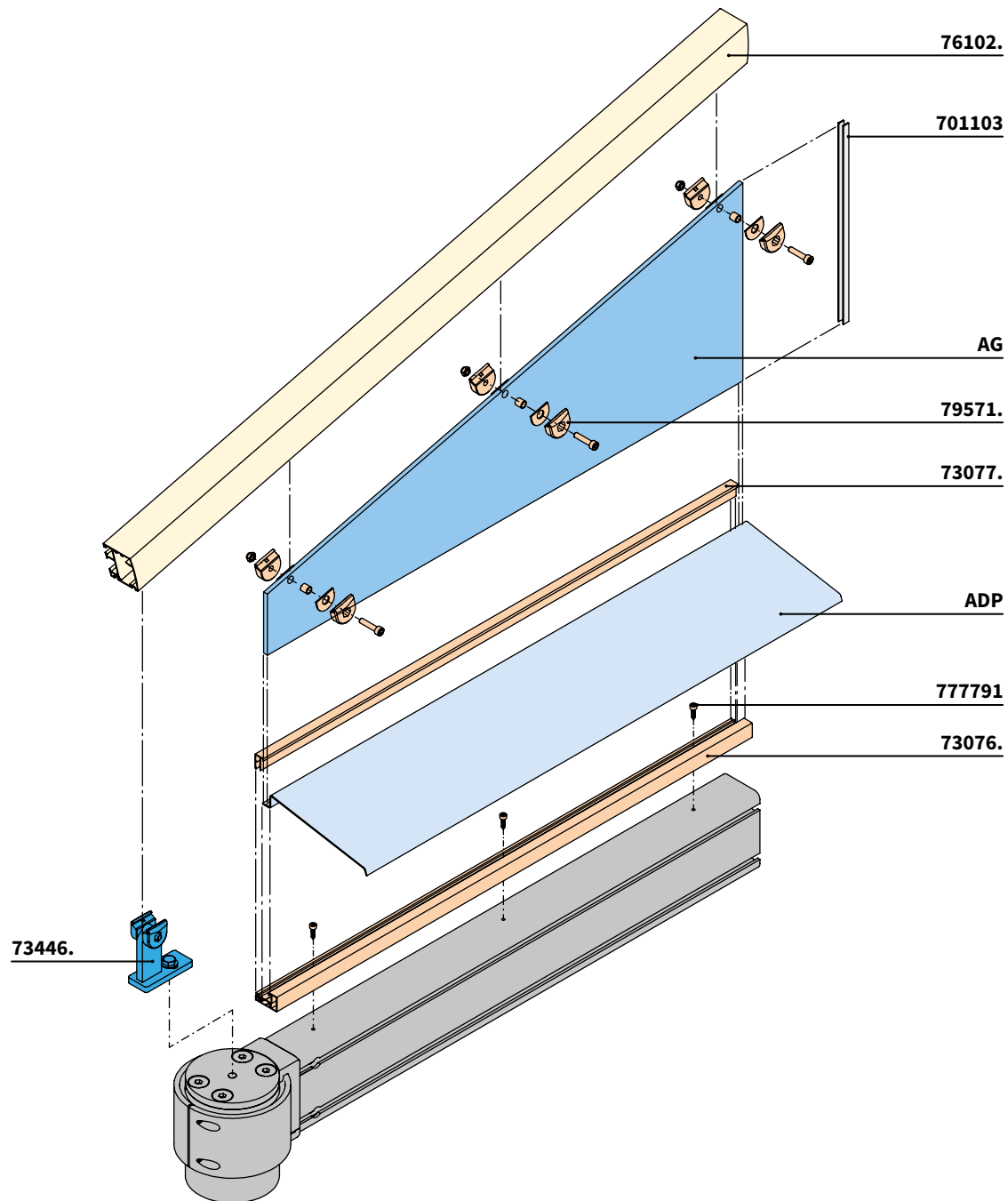
SH = *order dimension* = support post height

(standard: 3180 mm / max.: 4500 mm)

dimensions in mm

Overview

Triangular acrylic glass window and cover profile for a folding-arm awning

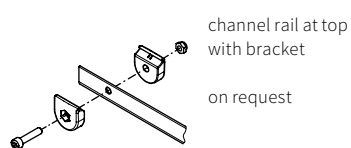


ADP = cover profile for folding-arm awnings

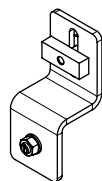
AG = acrylic glass

Overview of fixture dimensions

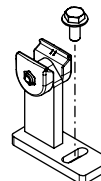
Triangular cover to the side – on request



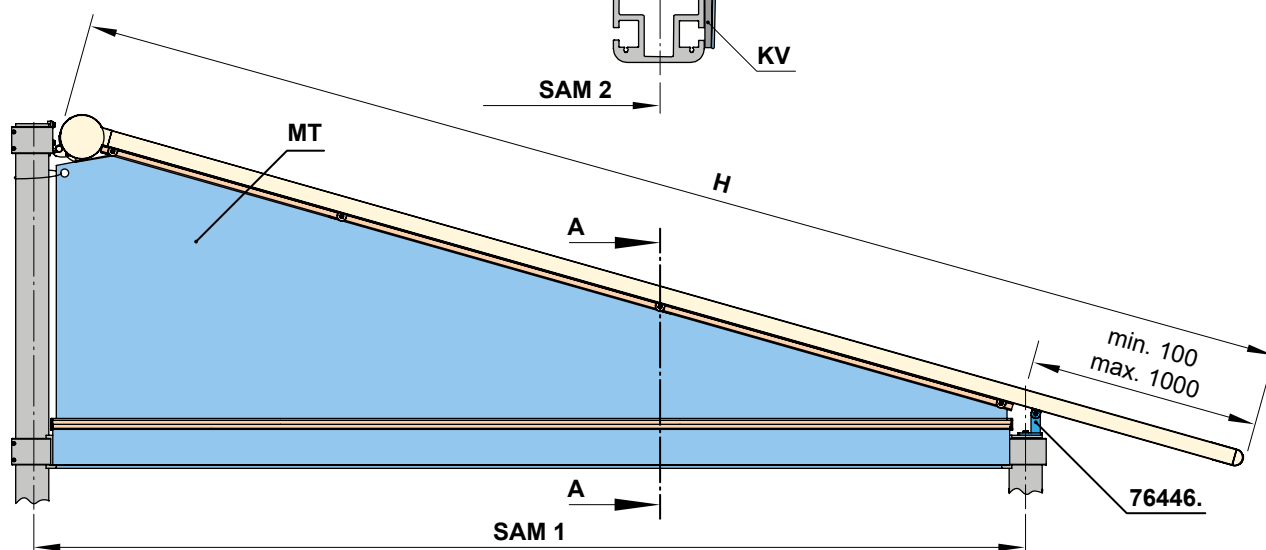
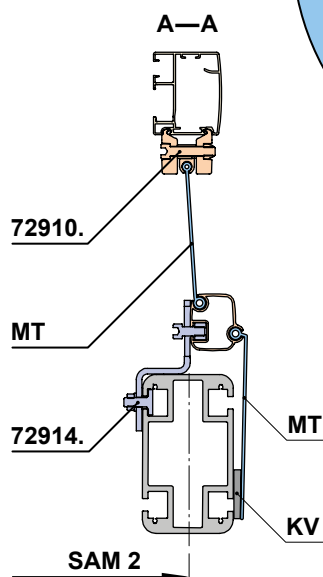
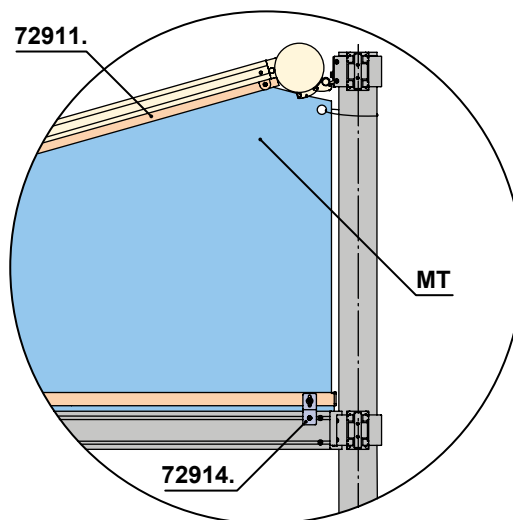
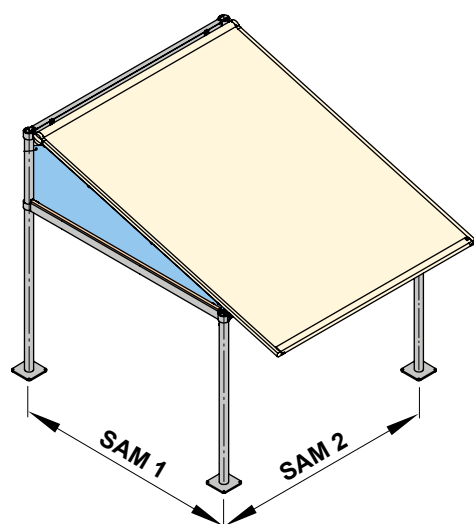
72911.



72914.



73446.



H = extension

KV = velcro fastener

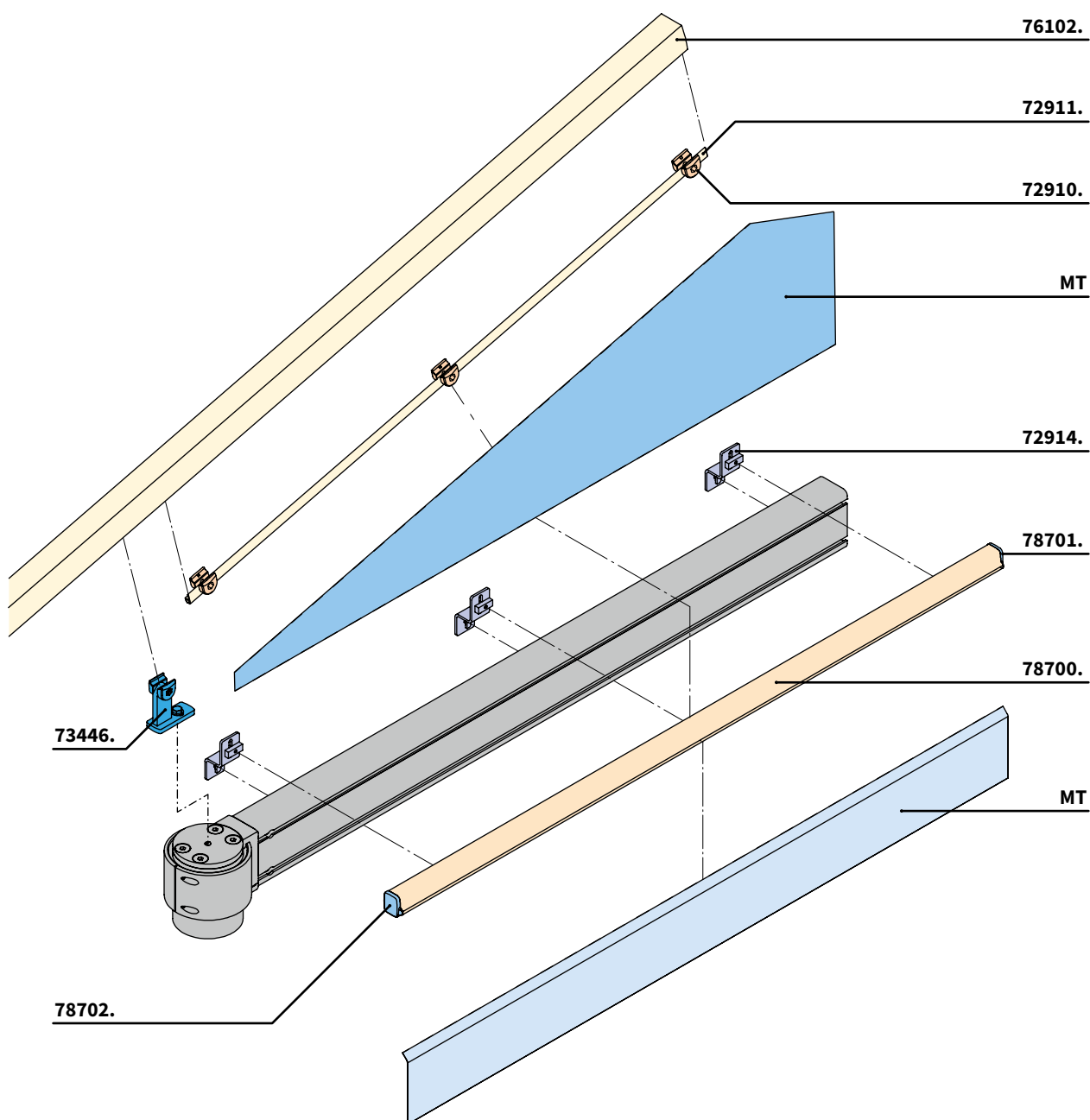
MT = awning cover

SAM = *order dimensions* = post separation centre to centre

dimensions in mm

Overview

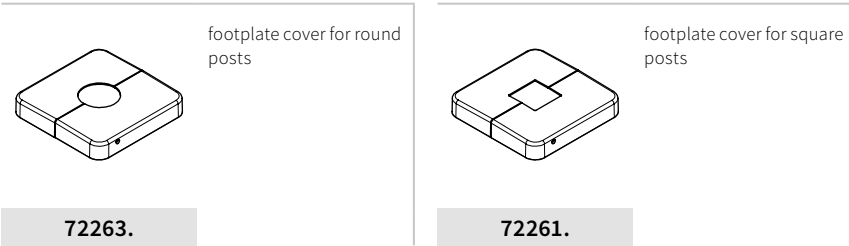
Triangular cover to the side



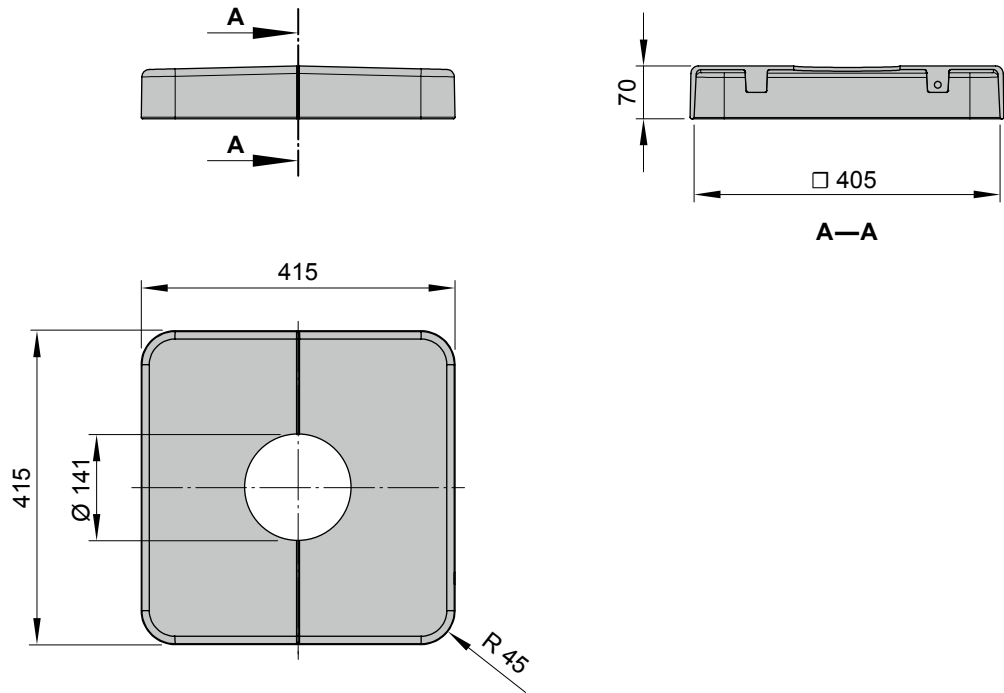
MT = awning cover

Overview of fixture dimensions

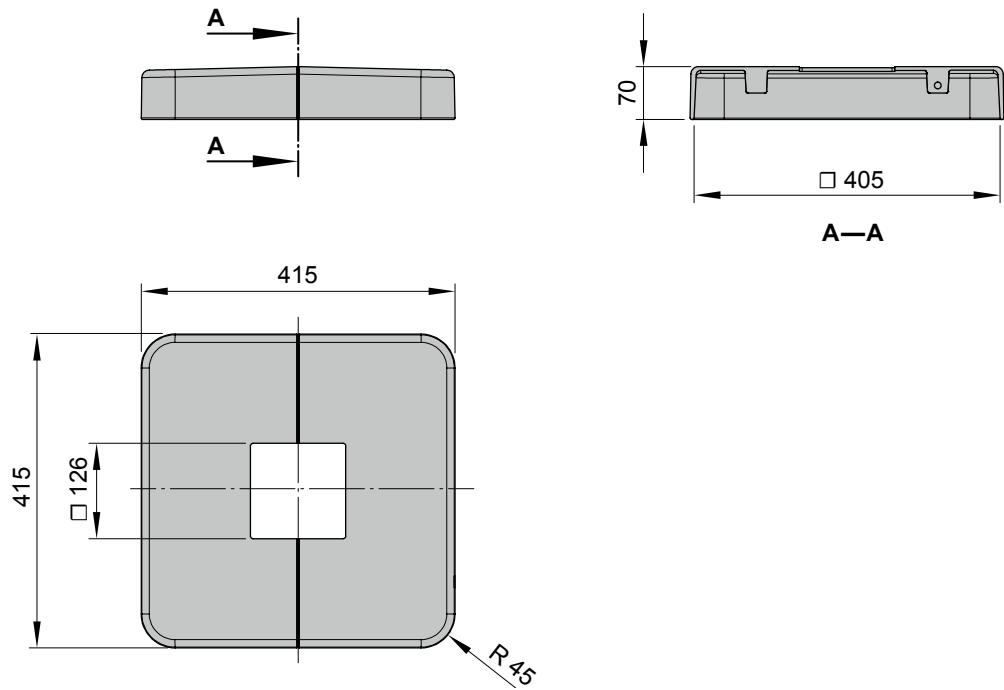
Base covers



Footplate cover for round posts



Footplate cover for square posts



dimensions in mm

01
02
03
04
05
06

07

01

02

03

04

05

06

 **07**