



Ambiente – Awning systems for open spaces

markilux



Creating a stylish atmosphere outdoors is a trend that in the past few years has already become distinctive of high-quality garden furniture and garden and patio accessories. Interior and exterior spaces are slowly morphing into one.

markilux

Ambiente – Awning systems for open areas

Experience and knowledge by tradition. Ideas and creativity for the future.



Awning systems for open areas

markilux pergola 110/210	6
markilux pergola 110/210 – Options and accessories.....	8
markilux syncra 2 fix/uno fix.....	10
markilux syncra 2 flex/uno flex	12
markilux syncra 2 – Options and accessories.....	14
markilux planet	16
markilux frame system RS-2.....	18
markilux 790 side screen	20

Optional accessories

markilux quality "made in Germany"	22
markilux operating technology	23
markilux awning covers "world of colours"	24
markilux lounge and standard colours	26
markilux lighting and infra-red heater	27
markilux operating comfort	28

markilux

markilux Ambiente – Awning systems for open areas

When it comes to offering stylish protection over large areas from the sun and inclement weather, markilux has a variety of products with high user value on offer. markilux Ambiente has products available that make your favourite outdoor spots even more beautiful.



markilux pergola 110/210 6 | 7



markilux syncra 2 fix/uno fix 10 | 11



markilux syncra 2 flex/uno flex 12 | 13



markilux planet 16 | 17



markilux frame system RS-2 18 | 19



markilux 790 20 | 21



Those used to spending time in stylish surroundings would undoubtedly also like to turn their outdoor living area into an oasis of well-being. An alluringly furnished patio and garden not only attract envious glances, but also serve as a place to relax and unwind.

markilux



rated to wind resistance
class 3 (corresponds
to Beaufort 6)

Covers recommended by markilux

Cover patterns from the exclusive visutex series, sunsilk snc, sunvas snc and, for special applications, covers from the specials collection.

Improved atmosphere and comfort

Optional accessories, e.g. the markilux shadeplus, infra-red heaters, light and wind sensors and much more.

Operation

Hard-wired motor or radio-controlled motor with markilux remote control.
Optionally: extremely quiet silentec motor.

Dimensions

Maximum width 500 cm up to a maximum extension of 600 cm.
Maximum width 600 cm up to a maximum extension of 450 cm.

markilux pergola 110/210 **tracfix**

Design: excellent.
Technology: outstanding.
Fun: unlimited.

Round, square, functional. Stylish and extremely sturdy solar and wet weather protection for large areas – both for private and commercial applications: the markilux pergola 110 / 210. Minimal frame structure, high utility value – the design brief has been fulfilled completely.

This awning system resting on slender posts with unobtrusive lateral guide tracks permits the stylish shading of even very large areas. The two front posts can be adjusted in height by up to 10 cm, to compensate for any eventual differences in levels. The height of one or both of the front posts of the markilux pergola 210 can be lowered by up to 40 cm for better water drainage using a winch handle.



markilux pergola 210

The post can be lowered by up to 40 cm, depending on the awning size. Improves water drainage in rainy conditions.



Winch handle operation, markilux pergola 210

To lower the front post.



Detail of front profile

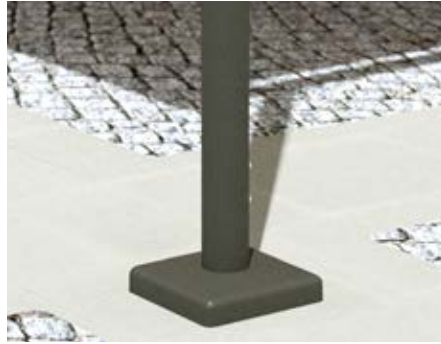
Becomes one with the guide tracks when extended.

markilux pergola 110/210 – Options and accessories



Square support posts

The alternative to round front posts.
Square, practical, chic.



Aluminium base plate cover

For the base of the front support posts.
Rounds off the appearance of the product.



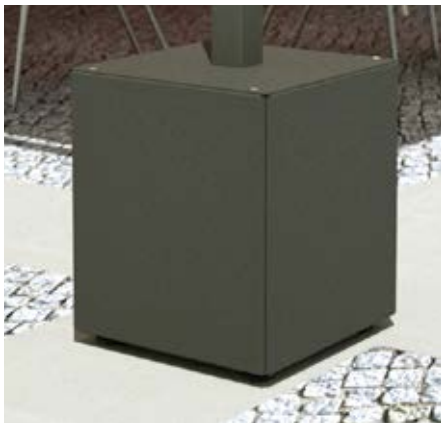
Coupled units

Up to 3 fields are possible.



Engaging appearance

Cassette with guide track protruding.



Stabilisation box

For either round or square front posts.
Flexible use without the necessity of a
concrete foundation.



tracfix

For secure lateral
cover cover guidance –
no gap between cover
and guide track.



LED spotlights

LED spotlights fitted to the cover support tube so that you can get even more enjoyment from your evening outside.



LED line

LED lines in the guide tracks and / or the cover support tube create a very stylish atmosphere.



markilux shadeplus / drop valance

Shade on demand! Vertical protection against the sun and prying eyes – up to a height of 230 cm; available only with manual operation by way of a stainless steel winding handle. It is not possible to use the markilux shadeplus if only one of the posts has been lowered!



Covers recommended by markilux

Cover patterns from the exclusive visutex series, sunsilk snc, sunvas snc and, for special applications, covers from the specials collection.

Improved atmosphere and comfort

Optional accessories, e.g. the markilux shadeplus, infra-red heaters, light and wind sensors and much more.

Operation

Manual operation with stainless steel winding handle. Optionally for more comfort: hard-wired or radio-controlled motor with markilux remote control.

Dimensions

Areas of up to approximately 60 m² can be shaded. Coupled units covering larger areas are also possible depending on the specification of the various awning models.

markilux syncra 2 fix

Principle: wings.
Aesthetics: perfect.
Variety: heavenly.

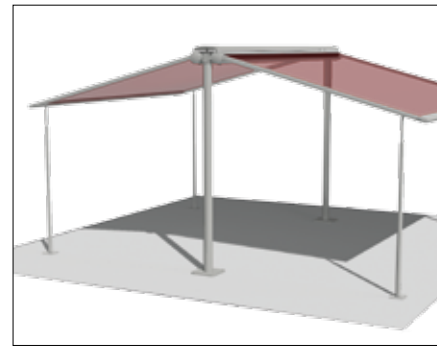
The free-standing solar and weather protection system for large areas: the markilux syncra 2 fix stands on two round posts (concrete foundation required). Awnings can be extended on both sides and if required just on one side only. Using it in combination with suitable awning models makes it possible to shade areas of up to 60 m² – and as a coupled unit even larger. As the markilux syncra 2 uno fix up to 30 m² can be shaded.

Ideally suited for premises, which only allow very limited awning installation. Ideal for the catering trade, hotels – and anywhere solar protection is to be shown off at its best.



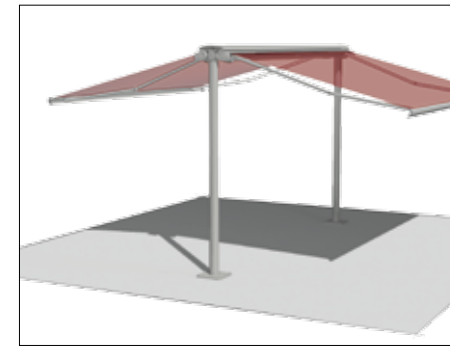
markilux syncra 2 uno fix with markilux pergola

If no awning can be fitted because of the structural condition of the building. Suitable for one markilux folding-arm awning or one markilux pergola only.



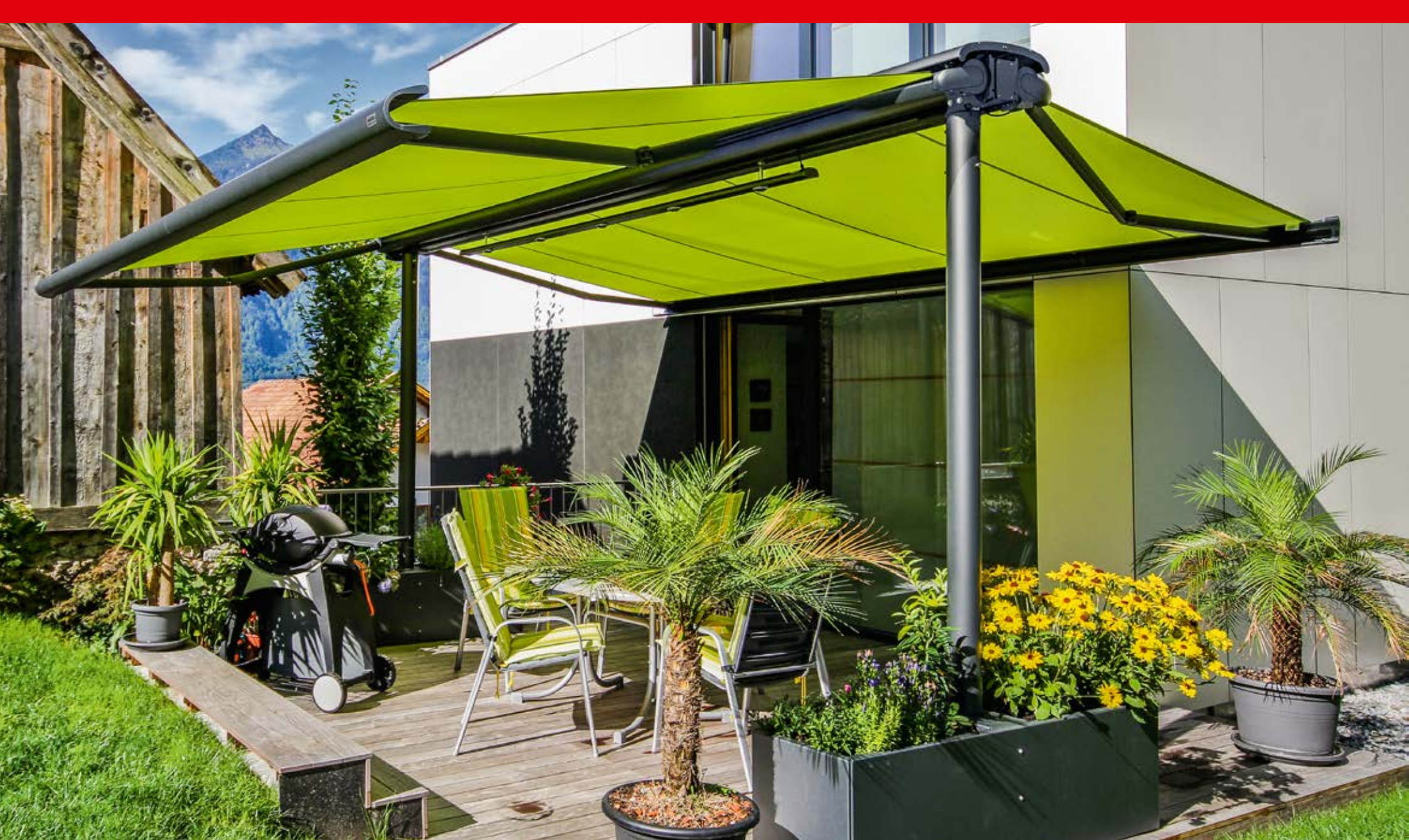
markilux syncra 2 fix

With two markilux pergolas 110/210.



markilux syncra 2 fix

With two folding-arm awnings.



Dimensions

In accordance with the selected markilux awning model an area of up to 30 m² can be shaded per awning. Using it in combination with suitable awning models makes it possible to shade areas of up to 60 m².

markilux syncra 2 flex

- Location:** any. The stable awning stand system offering stylish sun and wet weather protection for large areas – the markilux syncra 2 flex protects an area up to 60 m² from anything, which could impair the joy of being outdoors, both in the private and the commercial sphere. As the markilux syncra 2 uno flex it is available up to an area of 30 m².
- Protection:** generous.
- Beauty:** guaranteed.

Everywhere, where the installation of a permanent awning on site is difficult to implement and as it is free standing thanks to its stabilisation boxes – and therefore without concrete foundation – it can be positioned almost anywhere at will.



markilux syncra 2 uno flex with markilux pergola
If no awning can be fitted because of the structural condition of the building. Suitable for one markilux folding-arm awning or one markilux pergola only.



markilux stabilisation box
Top open, could be used as a flower bed (standard).



markilux stabilisation box
With top made of sheet aluminium (optional).



markilux stabilisation box
With WPC wood finish (optional).

markilux syncra 2 – Options and accessories



with the markilux 6000



with the markilux 5010



with the markilux 990



with the markilux 1710



with the markilux 1500, 1600 or 1650



with the markilux pergola

markilux syncra 2 uno



with the markilux 6000



with the markilux 5010



with the markilux 990



with the markilux 1710



with the markilux 1500, 1600 or 1650



with the markilux pergola



Awning Installation

The new cross member enables flexible bracket fixture and consequently easy installation of any markilux folding-arm awning. Example: Face fixture bracket markilux 6000.



Cable channel

Straightforward installation thanks to the integrated cable channel in the posts which protects the cabling and embellishes the product.



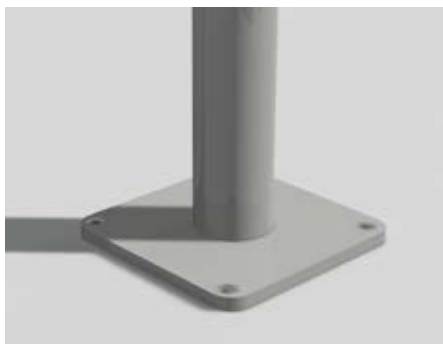
Coverboard

Detail of the markilux syncra 2 coverboard, illustrated by way of the markilux 990.



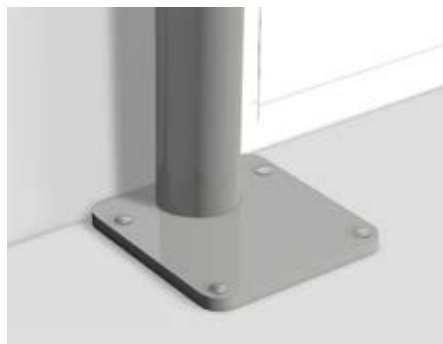
Coverboard uno

Detail of the markilux syncra 2 uno coverboard, illustrated by way of the markilux pergola.



Base plate syncra 2 fix

To be bolted to a concrete foundation.



Base plate syncra 2 uno fix

To be bolted to a concrete foundation, finishes flush to rear wall.



markilux shadeplus / drop valance

Vertical protection from the sun and prying eyes, depending on model and awning size up to 210 cm / 230 cm in height.



335°



Covers recommended by markilux

Cover patterns from the exclusive visutex series, sunsilk snc, sunvas snc and, for special applications, covers from the specials collection.

Dimensions

Maximum projection of 300 cm up to a width of 600 / 610 cm, Maximum projection of 350 cm up to a width of 500 / 510 cm, depending on the awning model specification.

Operation

Manual operation with stainless steel winding handle. Optionally for more comfort: hard-wired or radio-controlled motor with markilux remote control.

For more atmosphere

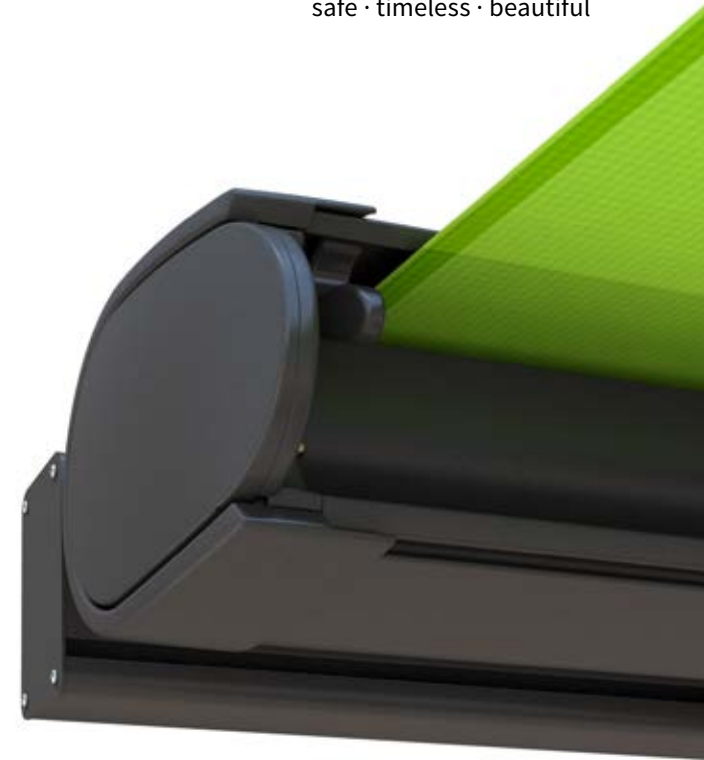
Intelligent optional accessories offering optimum comfort in accordance with the selected folding-arm awning model.

markilux planet

Parasol: no.
Awning: not really.
Solar protection: perfect.

The markilux planet with its unique look is an ideal design feature for your favourite spot in the garden. In the flex version it can be turned by 335° so that shade is provided exactly where you would like it to be. There are many frame colours and the fabrics of the markilux collection to choose from.

The parasol-awning planet by markilux has received four seals of quality from the foremost institute for innovation, the “Plus X Award”: for its design, innovative technology, quality and functionality. Furthermore, it received the award "Best product of the year 2014" in its own category.



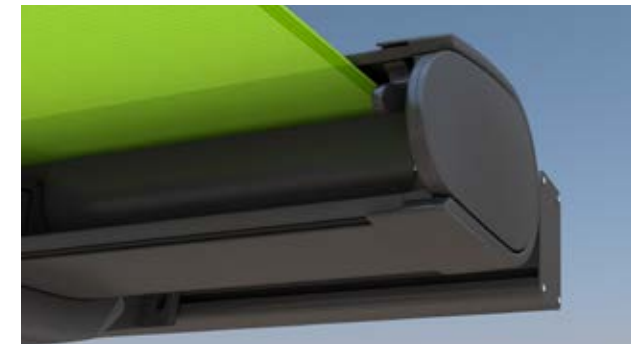
markilux shadeplus / drop valance

A shadeplus is possible depending on the awning model and size.



Detail of the easy-go rotating mechanism

In the markilux planet flex version it can be rotated by up to 335°. Lift the lever, rotate the markilux planet to the required position and allow the locking pin to relocate by lowering the lever again.



Detail of the awning cassette

Unique appearance, elegant design. The markilux planet harmonises perfectly with the design style of markilux folding-arm awnings. Illustration by way of the markilux 6000.



Covers recommended by markilux

Cover patterns from the exclusive visutex series, sunsilk snc, sunvas snc and, for special applications, covers from the specials collection.

Operation

Depending on the model: manual operation with stainless steel winding handle, hard-wired motor or remote-controlled motor with markilux remote control.

Dimensions

Field widths up to 700 cm, posts up to a maximum of 450 cm in height. Individual sections can be combined freely, size of the shaded area is virtually unlimited thanks to its modular design.

markilux RS-2

- Optics:** grandiose. More free space, opening up boundless possibilities. The diversity of all the possibilities offered by the free-standing frame system markilux RS-2 are completely mesmerising.
- Frame system:** free-standing.
- Variety:** unique. Whether in your own garden or on a larger scale at an hotel or restaurant, it provides perfect solar and wet weather protection tailored to exact size and with a multitude of awning models, covers and optional accessories on offer.

The frame system markilux RS-2 is a modular and flexible system, which merges design and function. With a field width of up to 700 cm and a maximum post height of 450 cm, highly individual awning landscapes can be realised.



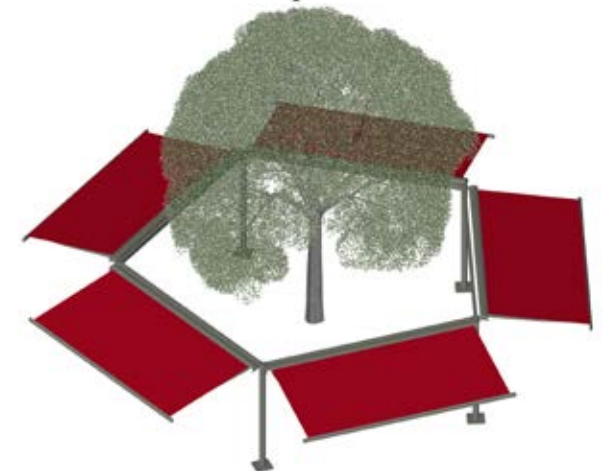
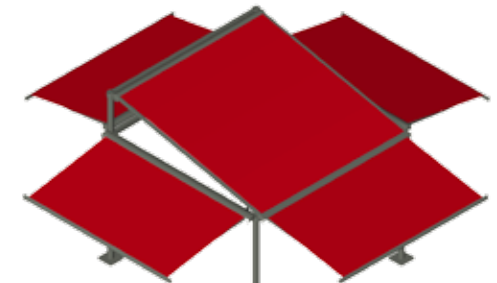
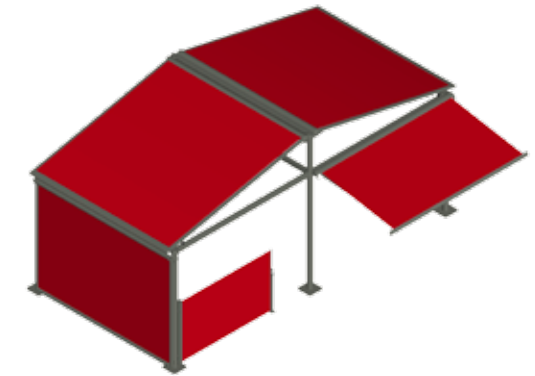
Detail of the clamp rings

The clamp rings which attach to the slim posts secure the cross members and can be positioned at any height.



Detail

Ingenious fixing brackets make it possible to fit vertical blinds and side screens to the posts. Up to a size of 400 cm by 300 cm, the markilux 869 and 876 tracfix systems can be fitted with panorama windows.



Configuration examples



Covers by markilux

Cover patterns from the exclusive visutex series, sunsilk snc, sunvas snc and, for special applications, covers from the specials collection.

Dimensions

Compact cassette in three different standard heights: 173 cm, 213 cm and 250 cm, maximum extension: 450 cm

markilux 790

Sun position: low. It protects from low-lying sun and inquisitive glances, to which you would prefer not to be exposed. It also provides protection from gusts of wind from the side.
Privacy: high.
Relaxation: 100%.

The markilux 790 is a vertical screen, which is mounted in a slim compact cassette against the wall. It is extended by being pulled out by the handle and then hooked on to a post, a face fixture bracket or markilux mobilfix.

This is how simple lateral protection from markilux can be. Convince yourself of its advantages and ease of use at your nearest markilux specialist dealer.



markilux 790 with angled top edge

The cover is optionally available with an angled top edge; this gives you the option of visually adapting it to the pitch of a markilux awning. Maximum extension: 400 cm.



markilux mobilfix

The use of the markilux mobilfix provides flexibility – a docking post mounted on a mobile granite footplate.



Technical specification

Face fixture bracket – also suitable for fixture to a balcony railing.



Manual operation

Simply extend and use it as vertical protection from sun, wind and prying eyes.

markilux quality “made in Germany”

Experience and knowledge by tradition. Ideas and creativity for the future.

Safety

Certified quality from a certified company; independent bodies audit us and document our commitment to quality. The uniqueness of our production facility, weaving mill and awning assembly lines in the confines of one company make it possible to create products that leave no wish unfulfilled.

Innovation

markilux awnings did not get to where they are by chance. In each of our products you will find technical innovations crafted for a particular application. We try to anticipate the requirements of tomorrow and satisfy them today.

Dynamics

markilux developments are dynamic. We think well ahead, as markilux clients should be able to enjoy our products for many years to come. Many of the ideas we have can be retro-fitted to already existing products. This makes our products very long-lasting indeed.

Functionality

markilux technology is designed to last for a small eternity. The materials used meet the highest standards so ensuring problem-free operation for many years.

Service

markilux, dedicated to craftsmanship. markilux Specialist Dealers are experts when it comes to the sale and installation of awnings. We support these businesses with our many years of experience, specialist training and know how.

Design

markilux products are designed to be timeless. Trendy and classic lines united in the perfect products for your home. Reputable designers have created beauty in both the technological and the textile.

markilux operating technology



markilux silentec

Less noise thanks to innovative motor technology and acoustic decoupling: The sophisticated silentec technology from markilux reduces the noise during retraction and extension of motor-driven awnings – availability depends on the model and awning size.

Hard-wired motor / radio-controlled motor with remote control

Tried and tested: the (remote-controlled) motors in markilux awnings. Easy to operate and always at hand: markilux remote controls.

Manual operation / servo-assisted operation

Hands-on quality. The ergonomically shaped markilux stainless steel winding handle – on request with smoothly operating servo drive – stands for functionality and tangible quality.

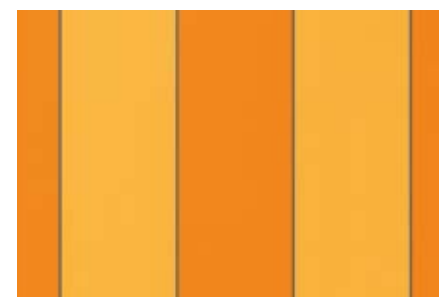
markilux awning covers

With the purchase of a markilux awning cover you have chosen a high-class, quality product. It significantly influences the colour ambiance and atmosphere under your awning. For even greater enjoyment of the colour ambiance provided by the shade of an awning, markilux offers an extensive collection of more than 250 cover patterns made from the innovative, high-tech fabrics sunvas snc and sunsilk snc.



Exclusivity at no extra cost – the visutex collection

Eight vibrant colour families and elegant patterns lend these fabrics, which were designed exclusively for markilux, a unique signature.



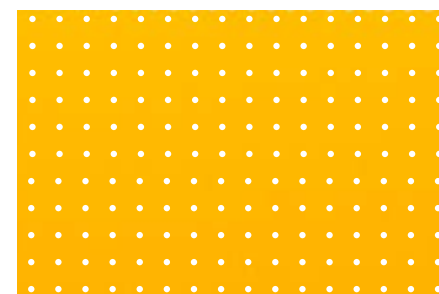
sunsilk snc

A silky, smooth surface, brilliant luminosity.



sunvas snc

Textile touch and appearance, soft luminosity.



Specials collections

For special applications; Shadeplus, vertical awnings, conservatory awnings, under-glass awnings etc.



markilux signwriting

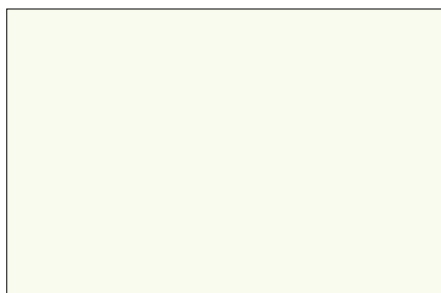
Awning covers and valances offer an ideal surface for outdoor advertising. The different printing methods available offer individual and almost unlimited design possibilities to display expressive and realistic images even on large cover areas.

markilux

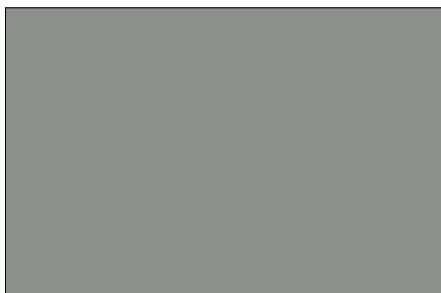
markilux Lounge and standard colours

The Lounge and standard frame colours are available at no extra cost, depending on the model and, together with the vast range of fabric patterns in the markilux collection, they offer almost endless possibilities of personalising the colour scheme of every awning. Other RAL colours are also available at a surcharge.

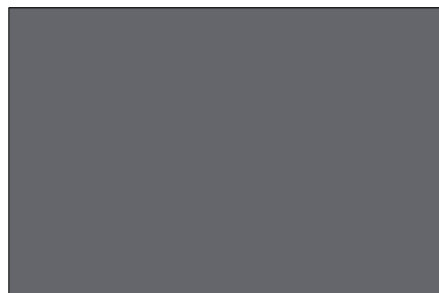
Lounge colours



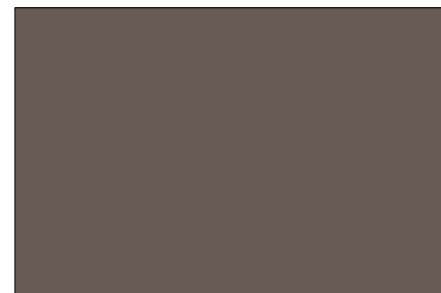
Off-white textured finish 5233



Stone grey metallic 5215

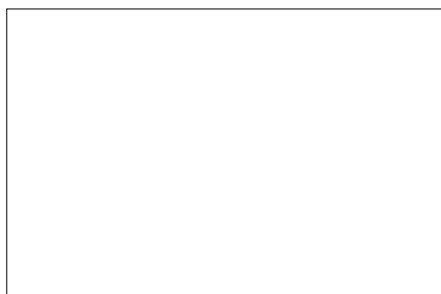


Anthracite metallic 5204

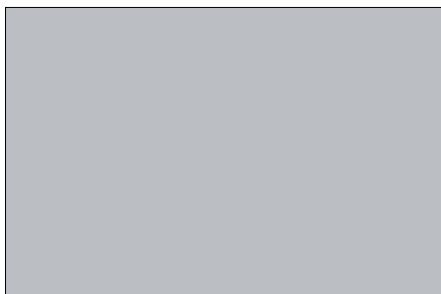


Havana brown textured finish 5229

Standard colours



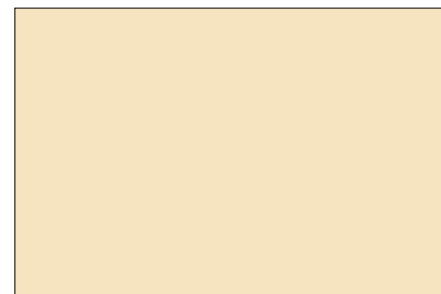
Traffic white RAL 9016



Metallic aluminium RAL 9006



Grey brown similar to RAL 8019



Light ivory RAL 1015

Colours similar to those in the RAL and db ranges – these may differ slightly from those depicted in both hue and finish.

markilux lighting and infra-red heaters



markilux infra-red heater

Feel the pleasant warmth instantly and make your evening last even longer.

The markilux infra-red heater in a waterproof, powder-coated aluminium housing saves at least 30% in energy compared to standard gas heating systems.

Available of course in the same colour as your awning and with remote control. Optionally with a power output of 1400 Watts or 2000 Watts.



markilux spotline LED

markilux spotline LED with swivelling LED spots in a powder-coated aluminium housing. Using the comfortable hand-held transmitter, the brightness can be dimmed and also the colour temperature adjusted from soft white to daylight white (3000 to 5500 Kelvin). The markilux spotline LED is available in three lengths 120 cm / 2 spotlights, 180 cm / 3 spotlights, and 300 cm / 5 spotlights.

Also available as markilux spotline with halogen spots in a length of 200 cm with 3 spotlights and 300 cm with 5 spotlights, each with a power output of 20 Watts.

markilux hotspot

Warmth and light in stylish combination.

With 4 halogen spots (20 Watts each) and 2 infra-red heaters (1400 Watts each), the markilux hotspot ensures a pleasant and enjoyable atmosphere. Warmth until late at night. Length 300 cm. Other lengths from 200 cm up to 400 cm on request.



markilux operating comfort



Our intelligent extras have only one purpose: to make your time under the markilux awning as comfortable and secure as possible.

Talk to your local markilux specialist dealer about the individual possibilities.

Radio-controlled motors and remote operation

With a radio-controlled motor your markilux will react at the press of a button. The ergonomically shaped and elegantly designed markilux remote control complements this feature perfectly.





Light and wind sensor (rain sensor optional)

The intelligent, automatic weather station: you can lean back – your markilux reacts to any and every change in the weather. The automatic sensors extend the awning when the sun comes out and retract it when the wind is too strong.



Sunis – solar-powered sunlight sensor

The sensor Sunis RTS makes your blind or awning react to sunlight and can be mounted on any wall.

It sends out a signal to extend or retract any blind or awning fitted with a radio-controlled motor without needing to be wired to the mains. Built-in solar cells ensure a reliable power supply.

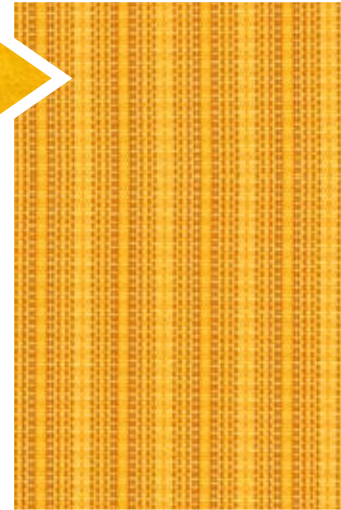
markilux Vibrabox

Small, intelligent, battery powered: depending on the windload, the markilux Vibrabox makes a radio-controlled, motor-driven awning retract if the wind becomes too strong. Fixture to either the inside or outside of the front profile. Available in white or anthracite.









Please do not hesitate to contact us if you require assistance or advice:

markilux awning covers

For even greater enjoyment of the colour ambiance provided by the shade of your awning, markilux offers an extensive collection of more than 250 fabric patterns.

markilux